


Product datasheet

Anti-Thymine DNA glycosylase antibody ab106301

★★★★☆ 2 Abreviews [画像数 3](#)

製品の概要

製品名	Anti-Thymine DNA glycosylase antibody
製品の詳細	Rabbit polyclonal to Thymine DNA glycosylase
由来種	Rabbit
アプリケーション	適用あり: WB, IP
種交差性	交差種: Mouse, Human 交差が予測される動物種: Rat, Rabbit, Chicken, Chinese hamster 
免疫原	Synthetic peptide conjugated to KLH derived from within residues 250 - 350 of Human Thymine DNA glycosylase .Immunogen の所有権に関して
ポジティブ・コントロール	This antibody gave a positive signal in the following whole cell lysates: HeLa; Jurkat; HEK293; A431; Hues7.

製品の特性

製品の状態	Liquid
保存方法	Shipped at 4°C. Store at +4°C short term (1-2 weeks). Upon delivery aliquot. Store at -20°C or -80°C. Avoid freeze / thaw cycle.
バッファー	pH: 7.40 Preservative: 0.02% Sodium azide Constituent: PBS Note: Batches of this product that have a concentration < 1mg/ml may have BSA added as a stabilising agent. If you would like information about the formulation of a specific lot, please contact our scientific support team who will be happy to help.
精製度	Immunogen affinity purified
ポリ/モノ	ポリクローナル
アイソタイプ	IgG

アプリケーション

Our [Abpromise guarantee](#) covers the use of **ab106301** in the following tested applications.

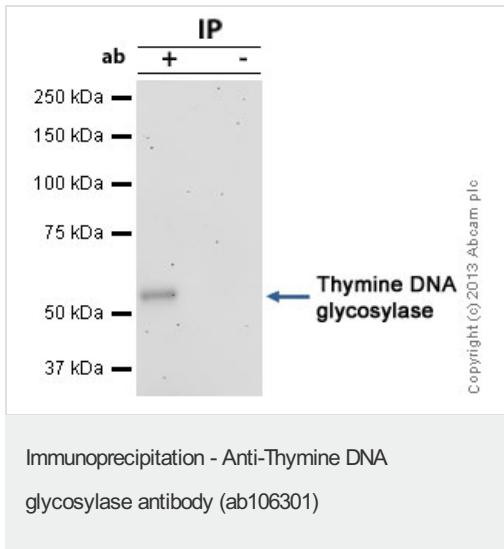
The application notes include recommended starting dilutions; optimal dilutions/concentrations should be determined by the end user.

アプリケーション	Abreviews	特記事項
WB	★★★★☆	Use a concentration of 1 µg/ml. Detects a band of approximately 50 kDa (predicted molecular weight: 46 kDa).
IP		Use a concentration of 5 µg/ml.

ターゲット情報

機能	In the DNA of higher eukaryotes, hydrolytic deamination of 5-methylcytosine to thymine leads to the formation of G/T mismatches. This enzyme corrects G/T mispairs to G/C pairs. It is capable of hydrolyzing the carbon-nitrogen bond between the sugar-phosphate backbone of the DNA and a mispaired thymine. In addition to the G/T, it can remove thymine also from C/T and T/T mispairs in the order G/T >> C/T > T/T. It has no detectable activity on apyrimidinic sites and does not catalyze the removal of thymine from A/T pairs or from single-stranded DNA. It can also remove uracil and 5-bromouracil from mispairs with guanine.
配列類似性	Belongs to the TDG/mug DNA glycosylase family.
翻訳後修飾	Sumoylation on Lys-330 by either SUMO1 or SUMO2 induces dissociation of the product DNA.
細胞内局在	Nucleus.

画像



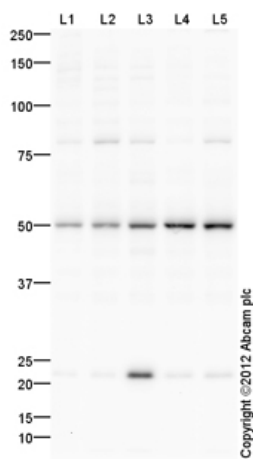
Thymine DNA glycosylase was immunoprecipitated using 0.5mg A431 whole cell extract, 5µg of Rabbit polyclonal to Thymine DNA glycosylase and 50µl of protein G magnetic beads (+). No antibody was added to the control (-).

The antibody was incubated under agitation with Protein G beads for 10min, A431 whole cell extract lysate diluted in RIPA buffer was added to each sample and incubated for a further 10min under agitation.

Proteins were eluted by addition of 40µl SDS loading buffer and incubated for 10min at 70°C; 10µl of each sample was separated on a SDS PAGE gel, transferred to a nitrocellulose membrane, blocked with 5% BSA and probed with ab106301.

Secondary: Mouse monoclonal [SB62a] Secondary Antibody to Rabbit IgG light chain (HRP) (ab99697).

Band: 50kDa; Thymine DNA glycosylase



Western blot - Anti-Thymine DNA glycosylase antibody (ab106301)

All lanes : Anti-Thymine DNA glycosylase antibody (ab106301) at 1 µg/ml

Lane 1 : HeLa (Human epithelial carcinoma cell line) Whole Cell Lysate

Lane 2 : Jurkat (Human T cell lymphoblast-like cell line) Whole Cell Lysate

Lane 3 : HEK293 (Human embryonic kidney cell line) Whole Cell Lysate

Lane 4 : A431 (Human epithelial carcinoma cell line) Whole Cell Lysate

Lane 5 : HUES7 (Human embryonic stem cell line) Whole Cell Lysate

Lysates/proteins at 10 µg per lane.

Secondary

All lanes : Goat Anti-Rabbit IgG H&L (HRP) preadsorbed (ab97080) at 1/5000 dilution

Developed using the ECL technique.

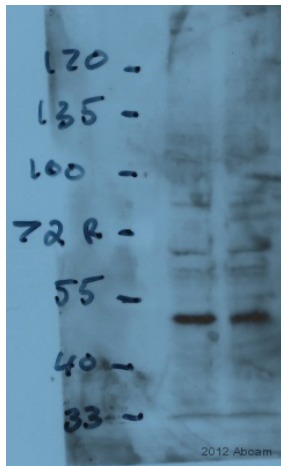
Performed under reducing conditions.

Predicted band size: 46 kDa

Observed band size: 50 kDa

Additional bands at: 22 kDa, 78 kDa. We are unsure as to the identity of these extra bands.

Exposure time: 2 minutes



Western blot - Anti-Thymine DNA glycosylase antibody (ab106301)

This image is courtesy of an anonymous Abreview

All lanes : Anti-Thymine DNA glycosylase antibody (ab106301) at 1 µg/ml

All lanes : Mouse ES whole cell lysate

Lysates/proteins at 100 µg per lane.

Secondary

All lanes : HRP Goat anti-rabbit IgG polyclonal at 1/2000 dilution

Developed using the ECL technique.

Performed under reducing conditions.

Predicted band size: 46 kDa

Observed band size: 50 kDa

Exposure time: 30 seconds

Please note: All products are "FOR RESEARCH USE ONLY AND ARE NOT INTENDED FOR DIAGNOSTIC OR THERAPEUTIC USE"

Our Abpromise to you: Quality guaranteed and expert technical support

- Replacement or refund for products not performing as stated on the datasheet
- Valid for 12 months from date of delivery
- Response to your inquiry within 24 hours
- We provide support in Chinese, English, French, German, Japanese and Spanish
- Extensive multi-media technical resources to help you
- We investigate all quality concerns to ensure our products perform to the highest standards

If the product does not perform as described on this datasheet, we will offer a refund or replacement. For full details of the Abpromise, please visit <http://www.abcam.co.jp/abpromise> or contact our technical team.

Terms and conditions

- Guarantee only valid for products bought direct from Abcam or one of our authorized distributors