


Product datasheet

Anti-Thymidine Kinase 1 (phospho S13) antibody ab59266

画像数 1

製品の概要

製品名	Anti-Thymidine Kinase 1 (phospho S13) antibody
製品の詳細	Rabbit polyclonal to Thymidine Kinase 1 (phospho S13)
由来種	Rabbit
特異性	Detects endogenous levels of Thymidine Kinase only when phosphorylated at serine 13.
アプリケーション	適用あり: IHC-P, ELISA
種交差性	交差種: Human 交差が予測される動物種: Mouse 
免疫原	Synthetic phosphopeptide derived from human Thymidine Kinase around the phosphorylation site of serine 13 (P-G-S ^P -P-S).
ポジティブ・コントロール	Human breast carcinoma.

製品の特性

製品の状態	Liquid
保存方法	Shipped at 4°C. Store at -20°C. Stable for 12 months at -20°C.
バッファー	Preservative: 0.02% Sodium Azide Constituents: 50% Glycerol, PBS (without Mg ²⁺ and Ca ²⁺), 150mM Sodium chloride, pH 7.4
精製度	Immunogen affinity purified
ポリ/モノ	ポリクローナル
アイソタイプ	IgG

アプリケーション

Our [Abpromise guarantee](#) covers the use of **ab59266** in the following tested applications.

The application notes include recommended starting dilutions; optimal dilutions/concentrations should be determined by the end user.

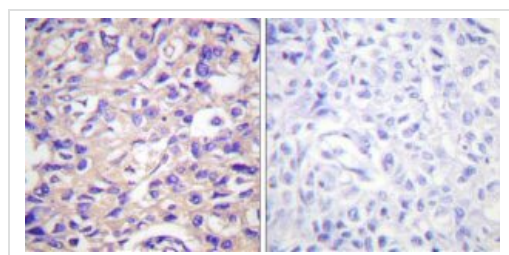
アプリケーション	Abreviews	特記事項
IHC-P		Use at an assay dependent concentration.

アプリケーション	Abreviews	特記事項
ELISA		1/5000.

ターゲット情報

配列類似性	Belongs to the thymidine kinase family.
翻訳後修飾	Phosphorylated on Ser-13 in mitosis.
細胞内局在	Cytoplasm.

画像



Immunohistochemical analysis of paraffin-embedded human breast carcinoma tissue using ab59266 at a dilution of 1/50-1/100. Left hand image - without immunising peptide; right hand image - with immunising peptide.

Immunohistochemistry (Paraffin-embedded sections)
 - Thymidine Kinase (phospho S13) antibody
 (ab59266)

Please note: All products are "FOR RESEARCH USE ONLY AND ARE NOT INTENDED FOR DIAGNOSTIC OR THERAPEUTIC USE"

Our Abpromise to you: Quality guaranteed and expert technical support

- Replacement or refund for products not performing as stated on the datasheet
- Valid for 12 months from date of delivery
- Response to your inquiry within 24 hours
- We provide support in Chinese, English, French, German, Japanese and Spanish
- Extensive multi-media technical resources to help you
- We investigate all quality concerns to ensure our products perform to the highest standards

If the product does not perform as described on this datasheet, we will offer a refund or replacement. For full details of the Abpromise, please visit <http://www.abcam.co.jp/abpromise> or contact our technical team.

Terms and conditions

- Guarantee only valid for products bought direct from Abcam or one of our authorized distributors