

Product datasheet

Anti-Tetranectin antibody [EPR3067] ab108999

リコンビナント RabMAb®

★★★★★ 2 Abreviews 画像数 2

製品の概要

製品名	Anti-Tetranectin antibody [EPR3067]
製品の詳細	Rabbit monoclonal [EPR3067] to Tetranectin
由来種	Rabbit
アプリケーション	適用あり: IHC-Fr, WB, IP, IHC-P, ICC 適用なし: Flow Cyt
種交差性	交差種: Mouse, Rat, Human
免疫原	Synthetic peptide within Human Tetranectin aa 150-250. The exact sequence is proprietary.
ポジティブ・コントロール	Human fetal kidney and Human plasma lysates; Human kidney tissue.
特記事項	

Our RabMAb® technology is a patented hybridoma-based technology for making rabbit monoclonal antibodies. For details on our patents, please refer to [RabMAb® patents](#)

We are constantly working hard to ensure we provide our customers with best in class antibodies. As a result of this work we are pleased to now offer this antibody in purified format. We are in the process of updating our datasheets. The purified format is designated 'PUR' on our product labels. If you have any questions regarding this update, please contact our Scientific Support team.

This product is a recombinant rabbit monoclonal antibody.

製品の特性

製品の状態	Liquid
保存方法	Shipped at 4°C. Store at -20°C. Stable for 12 months at -20°C.
バッファー	PBS 49%, Sodium azide 0.01%, Glycerol 50%, BSA 0.05%
精製度	Protein A purified
ポリ/モノ	モノクローナル
クローン名	EPR3067
アイソタイプ	IgG

アプリケーション

Our [Abpromise guarantee](#) covers the use of **ab108999** in the following tested applications.

The application notes include recommended starting dilutions; optimal dilutions/concentrations should be determined by the end user.

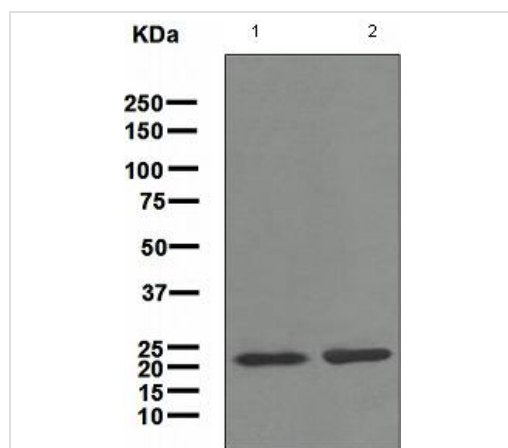
アプリケーション	Abreviews	特記事項
IHC-Fr	★★★★☆	Use at an assay dependent concentration.
WB	★★★★★	1/1000 - 1/10000. Detects a band of approximately 22 kDa (predicted molecular weight: 23 kDa).
IP		1/10 - 1/100.
IHC-P		1/500 - 1/1000. Perform heat mediated antigen retrieval before commencing with IHC staining protocol.
ICC		1/250 - 1/500.

追加情報 Is unsuitable for Flow Cyt.

ターゲット情報

機能	Tetranectin binds to plasminogen and to isolated kringle 4. May be involved in the packaging of molecules destined for exocytosis.
組織特異性	Found in plasma.
配列類似性	Contains 1 C-type lectin domain.
細胞内局在	Secreted.

画像



All lanes : Anti-Tetranectin antibody [EPR3067] (ab108999) at 1/1000 dilution

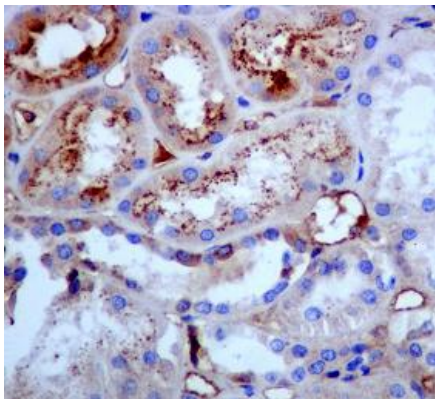
Lane 1 : Human fetal kidney lysate

Lane 2 : Human plasma lysate

Lysates/proteins at 10 µg per lane.

Predicted band size: 23 kDa

Western blot - Anti-Tetranectin antibody [EPR3067] (ab108999)



ab108999 at 1/500 dilution staining
Tetranectin in Human kidney by
Immunohistochemistry, Paraffin-embedded
tissue.

Immunohistochemistry (Formalin/PFA-fixed paraffin-
embedded sections) - Anti-Tetranectin antibody
[EPR3067] (ab108999)

Please note: All products are "FOR RESEARCH USE ONLY AND ARE NOT INTENDED FOR DIAGNOSTIC OR THERAPEUTIC USE"

Our Abpromise to you: Quality guaranteed and expert technical support

- Replacement or refund for products not performing as stated on the datasheet
- Valid for 12 months from date of delivery
- Response to your inquiry within 24 hours
- We provide support in Chinese, English, French, German, Japanese and Spanish
- Extensive multi-media technical resources to help you
- We investigate all quality concerns to ensure our products perform to the highest standards

If the product does not perform as described on this datasheet, we will offer a refund or replacement. For full details of the Abpromise, please visit <http://www.abcam.co.jp/abpromise> or contact our technical team.

Terms and conditions

- Guarantee only valid for products bought direct from Abcam or one of our authorized distributors