


Product datasheet

Anti-Tensin 1 antibody ab52008

画像数 1

製品の概要

製品名	Anti-Tensin 1 antibody
製品の詳細	Goat polyclonal to Tensin 1
アプリケーション	適用あり: ELISA, ICC
種交差性	交差種: Human 交差が予測される動物種: Mouse, Rat 
免疫原	Synthetic peptide: C-VSKVMLNAGQKR , corresponding to C terminal amino acids 1724-1735 of Human Tensin 1 Run BLAST with Run BLAST with

製品の特性

製品の状態	Liquid
保存方法	Shipped at 4°C. Upon delivery aliquot and store at -20°C or -80°C. Avoid repeated freeze / thaw cycles.
バッファー	Preservative: 0.02% Sodium Azide Constituents: 0.5% BSA, Tris saline, pH 7.3
精製度	Immunogen affinity purified
特記事項 (精製)	Purified from goat serum by ammonium sulphate precipitation followed by antigen affinity chromatography using the immunizing peptide.
ポリモノ	ポリクローナル
アイソタイプ	IgG

アプリケーション

Our [Abpromise guarantee](#) covers the use of **ab52008** in the following tested applications.

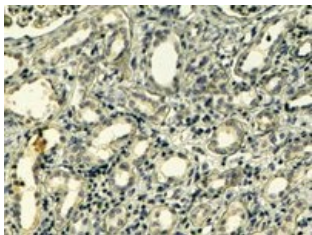
The application notes include recommended starting dilutions; optimal dilutions/concentrations should be determined by the end user.

アプリケーション	Abreviews	特記事項
ELISA		1/2000. Peptide ELISA
ICC		Use a concentration of 4 - 6 µg/ml.

ターゲット情報

機能	Involved in fibrillar adhesion formation. May be involved in cell migration, cartilage development and in linking signal transduction pathways to the cytoskeleton.
組織特異性	Ubiquitous.
配列類似性	Contains 1 C2 tensin-type domain. Contains 1 phosphatase tensin-type domain. Contains 1 SH2 domain.
翻訳後修飾	Rapidly cleaved by calpain II.
細胞内局在	Cell surface. Cell junction, focal adhesion. Cytoplasm, cytoskeleton. Localized at cell periphery preferentially to fibrillar adhesions than focal adhesions. Translocates from the cell edge to cell center in an ITGB1BP1-dependent manner.

画像



Immunocytochemistry - Anti-Tensin 1 antibody
(ab52008)

ab52008 (4µg/ml) staining of paraffin embedded Human Kidney. Steamed antigen retrieval with Tris/EDTA buffer pH 9, HRP-staining shows weak staining of the basement membranes of convoluted tubules.

Please note: All products are "FOR RESEARCH USE ONLY AND ARE NOT INTENDED FOR DIAGNOSTIC OR THERAPEUTIC USE"

Our Abpromise to you: Quality guaranteed and expert technical support

- Replacement or refund for products not performing as stated on the datasheet
- Valid for 12 months from date of delivery
- Response to your inquiry within 24 hours
- We provide support in Chinese, English, French, German, Japanese and Spanish
- Extensive multi-media technical resources to help you
- We investigate all quality concerns to ensure our products perform to the highest standards

If the product does not perform as described on this datasheet, we will offer a refund or replacement. For full details of the Abpromise,

please visit <http://www.abcam.co.jp/abpromise> or contact our technical team.

Terms and conditions

- Guarantee only valid for products bought direct from Abcam or one of our authorized distributors