


Anti-TUBB8 antibody ab97880

画像数 2

製品の概要

製品名	Anti-TUBB8 antibody
製品の詳細	Rabbit polyclonal to TUBB8
アプリケーション	適用あり: WB, ICC/IF
種交差性	交差種: Human 交差が予測される動物種: Rat, Zebrafish 
免疫原	Synthetic peptide corresponding to a region within amino acids 366 and 430 of Human TUBB8 (NP_817124).
ポジティブ・コントロール	293T, A431, H1299, HeLaS3, HepG2, MOLT4 and Raji cell lines

法規制情報

医薬用外毒物

製品の特性

製品の状態	Liquid
保存方法	Shipped at 4°C. Upon delivery aliquot and store at -20°C or -80°C. Avoid repeated freeze / thaw cycles.
バッファー	Preservative: 0.01% Thimerosal (merthiolate) Constituents: 10% Glycerol, 0.1M Tris, 0.1M Glycine, pH 7
精製度	Immunogen affinity purified
ポリ/モノ	ポリクローナル
アイソタイプ	IgG

アプリケーション

Our [Abpromise guarantee](#) covers the use of **ab97880** in the following tested applications.

The application notes include recommended starting dilutions; optimal dilutions/concentrations should be determined by the end user.

アプリケーション	Abreviews	特記事項
WB		1/500 - 1/3000. Predicted molecular weight: 50 kDa.
ICC/IF		1/100 - 1/200.

ターゲット情報

機能

Tubulin is the major constituent of microtubules. It binds two moles of GTP, one at an exchangeable site on the beta chain and one at a non-exchangeable site on the alpha chain.

配列類似性

Belongs to the tubulin family.

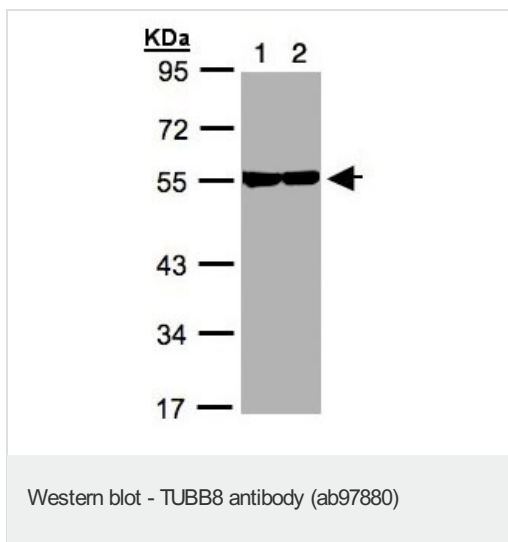
翻訳後修飾

Some glutamate residues at the C-terminus are polyglutamylated. This modification occurs exclusively on glutamate residues and results in polyglutamate chains on the gamma-carboxyl group. Also monoglycylated but not polyglycylated due to the absence of functional TLL10 in human. Monoglycylation is mainly limited to tubulin incorporated into axonemes (cilia and flagella) whereas glutamylation is prevalent in neuronal cells, centrioles, axonemes, and the mitotic spindle. Both modifications can coexist on the same protein on adjacent residues, and lowering glycylation levels increases polyglutamylated, and reciprocally. The precise function of such modifications is still unclear but they regulate the assembly and dynamics of axonemal microtubules.

細胞内局在

Cytoplasm > cytoskeleton.

Anti-TUBB8 antibody 画像



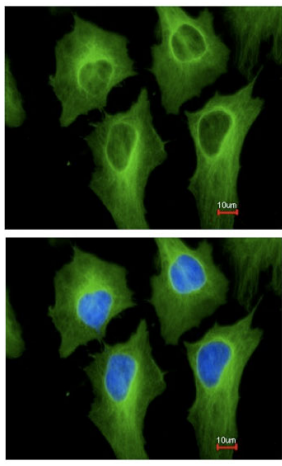
All lanes : Anti-TUBB8 antibody (ab97880) at 1/1000 dilution

Lane 1 : A431 whole cell lysate

Lane 2 : H1299 whole cell lysate

Lysates/proteins at 30 µg per lane.

Predicted band size : 50 kDa



Immunofluorescence analysis of TUBB8 in paraformaldehyde fixed HeLa, using ab97880 at a 1/200 dilution.
Lower image: merged with DNA probe.

Immunocytochemistry/ Immunofluorescence -
TUBB8 antibody (ab97880)

Please note: All products are "FOR RESEARCH USE ONLY AND ARE NOT INTENDED FOR DIAGNOSTIC OR THERAPEUTIC USE"

Our Abpromise to you: Quality guaranteed and expert technical support

- Replacement or refund for products not performing as stated on the datasheet
- Valid for 12 months from date of delivery
- Response to your inquiry within 24 hours

- We provide support in Chinese, English, French, German, Japanese and Spanish
- Extensive multi-media technical resources to help you
- We investigate all quality concerns to ensure our products perform to the highest standards

If the product does not perform as described on this datasheet, we will offer a refund or replacement. For full details of the Abpromise, please visit <http://www.abcam.co.jp/abpromise> or contact our technical team.

Terms and conditions

- Guarantee only valid for products bought direct from Abcam or one of our authorized distributors