

Product datasheet

Anti-TUBA3C antibody ab75069

画像数 3

製品の概要

| | |
|--------------|--|
| 製品名 | Anti-TUBA3C antibody |
| 製品の詳細 | Rabbit polyclonal to TUBA3C |
| 由来種 | Rabbit |
| アプリケーション | 適用あり: WB, ELISA |
| 種交差性 | 交差種: Human 交差が予測される動物種: Mouse, Rat, Sheep, Rabbit, Dog, Pig, Caenorhabditis elegans, Drosophila melanogaster, Zebrafish |
| 免疫原 | Synthetic peptide corresponding to Human TUBA3C aa 68-117. Sequence: VDLEPTVVDEVRTGTYRQLFHPEQLITGKEDAANNYARGHYTIGKEIVDL Run BLAST with Run BLAST with |
| ポジティブ・コントロール | HepG2 cell lysate. |

製品の特性

| | |
|--------|---|
| 製品の状態 | Liquid |
| 保存方法 | Shipped at 4°C. Upon delivery aliquot and store at -20°C or -80°C. Avoid repeated freeze / thaw cycles. |
| バッファー | Preservative: None Constituents: 2% Sucrose, PBS |
| 精製度 | Immunogen affinity purified |
| ポリ/モノ | ポリクローナル |
| アイソタイプ | IgG |

アプリケーション

Our [Abpromise guarantee](#) covers the use of **ab75069** in the following tested applications.

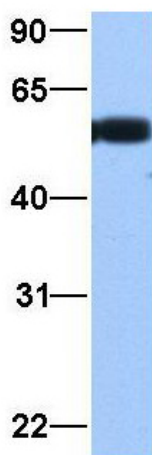
The application notes include recommended starting dilutions; optimal dilutions/concentrations should be determined by the end user.

| アプリケーション | Abreviews | 特記事項 |
|----------|-----------|--|
| WB | | Use a concentration of 1 µg/ml. Predicted molecular weight: 50 kDa. Good results were obtained when blocked with 5% non-fat dry milk in 0.05% PBS-T. |
| ELISA | | Use at an assay dependent dilution. |

ターゲット情報

| | |
|-------|---|
| 機能 | Tubulin is the major constituent of microtubules. It binds two moles of GTP, one at an exchangeable site on the beta chain and one at a non-exchangeable site on the alpha-chain. |
| 組織特異性 | Testis specific. |
| 配列類似性 | Belongs to the tubulin family. |
| 翻訳後修飾 | <p>Undergoes a tyrosination/detyrosination cycle, the cyclic removal and re-addition of a C-terminal tyrosine residue by the enzymes tubulin tyrosine carboxypeptidase (TTCP) and tubulin tyrosine ligase (TTL), respectively.</p> <p>Some glutamate residues at the C-terminus are polyglutamylated. This modification occurs exclusively on glutamate residues and results in polyglutamate chains on the gamma-carboxyl group. Also monoglycylated but not polyglycylated due to the absence of functional TTL10 in human. Monoglycylation is mainly limited to tubulin incorporated into axonemes (cilia and flagella) whereas glutamylation is prevalent in neuronal cells, centrioles, axonemes, and the mitotic spindle. Both modifications can coexist on the same protein on adjacent residues, and lowering glycylation levels increases polyglutamylation, and reciprocally. The precise function of such modifications is still unclear but they regulate the assembly and dynamics of axonemal microtubules.</p> <p>Acetylation of alpha-tubulins at Lys-40 stabilizes microtubules and affects affinity and processivity of microtubule motors. This modification has a role in multiple cellular functions, ranging from cell motility, cell cycle progression or cell differentiation to intracellular trafficking and signaling.</p> |
| 細胞内局在 | Cytoplasm > cytoskeleton. |

画像



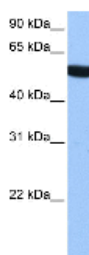
Western blot analysis of Jurkat cell lysate labeling TUBA3C with ab75069 at 1.0µg/ml.

Western blot - Anti-TUBA3C antibody (ab75069)



Western blot analysis of HeLa cell lysate labeling TUBA3C with ab75069 at 1.0µg/ml.

Western blot - Anti-TUBA3C antibody (ab75069)



Anti-TUBA3C antibody (ab75069) at 1 µg/ml + HepG2 cell lysate at 10 µg

Secondary

HRP conjugated anti-Rabbit IgG at 1/50000 dilution

Western blot - Anti-TUBA3C antibody (ab75069)

Predicted band size: 50 kDa

Observed band size: 50 kDa

Please note: All products are "FOR RESEARCH USE ONLY AND ARE NOT INTENDED FOR DIAGNOSTIC OR THERAPEUTIC USE"

Our Abpromise to you: Quality guaranteed and expert technical support

- Replacement or refund for products not performing as stated on the datasheet
- Valid for 12 months from date of delivery
- Response to your inquiry within 24 hours

- We provide support in Chinese, English, French, German, Japanese and Spanish
- Extensive multi-media technical resources to help you
- We investigate all quality concerns to ensure our products perform to the highest standards

If the product does not perform as described on this datasheet, we will offer a refund or replacement. For full details of the Abpromise, please visit <http://www.abcam.co.jp/abpromise> or contact our technical team.

Terms and conditions

- Guarantee only valid for products bought direct from Abcam or one of our authorized distributors