

## Product datasheet

# Anti-TRPC6 antibody ab62461

★★★★★ 1 Abreviews 3 References 画像数 4

### 製品の概要

---

製品名	Anti-TRPC6 antibody
製品の詳細	Rabbit polyclonal to TRPC6
由来種	Rabbit
特異性	This antibody does potentially cross-react with TRPC3.
アプリケーション	<b>適用あり:</b> IHC-P, ICC/IF, WB
種交差性	<b>交差種:</b> Mouse, Human
免疫原	Synthetic peptide corresponding to Human TRPC6 (N terminal). Database link: <a href="#">Q9Y210</a> (Peptide available as <a href="#">ab106953</a> )
ポジティブ・コントロール	WB: K562 cell lysate. IHC-P: Mouse lung tissue. ICC/IF: K562 cells.

### 製品の特性

---

製品の状態	Liquid
保存方法	Shipped at 4°C. Store at +4°C short term (1-2 weeks). Upon delivery aliquot. Store at -20°C. Avoid freeze / thaw cycle.
バッファー	Preservative: 0.02% Sodium azide Constituent: PBS
精製度	Immunogen affinity purified
ポリ/モノ	ポリクローナル
アイソタイプ	IgG

### アプリケーション

---

Our [Abpromise guarantee](#) covers the use of **ab62461** in the following tested applications.

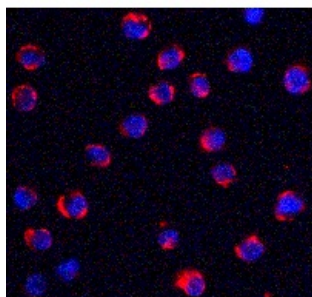
The application notes include recommended starting dilutions; optimal dilutions/concentrations should be determined by the end user.

アプリ ケーション	Abreviews	特記事項
IHC-P		Use a concentration of 10 µg/ml.
ICC/IF	★★★★★	Use at an assay dependent concentration.
WB		Use a concentration of 0.5 - 1 µg/ml. Detects a band of approximately 106 kDa (predicted molecular weight: 106 kDa). Can be blocked with <a href="#">TRPC6 peptide (ab106953)</a> .

## ターゲット情報

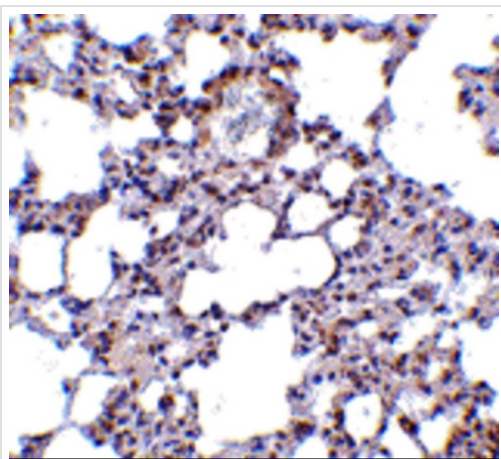
機能	Thought to form a receptor-activated non-selective calcium permeant cation channel. Probably is operated by a phosphatidylinositol second messenger system activated by receptor tyrosine kinases or G-protein coupled receptors. Activated by diacylglycerol (DAG) in a membrane-delimited fashion, independently of protein kinase C. Seems not to be activated by intracellular calcium store depletion.
組織特異性	Expressed primarily in placenta, lung, spleen, ovary and small intestine. Expressed in podocytes and is a component of the glomerular slit diaphragm.
関連疾患	Defects in TRPC6 are the cause of focal segmental glomerulosclerosis type 2 (FSGS2) [MIM:603965]. A renal pathology defined by the presence of segmental sclerosis in glomeruli and resulting in proteinuria, reduced glomerular filtration rate and edema. Renal insufficiency often progresses to end-stage renal disease, a highly morbid state requiring either dialysis therapy or kidney transplantation.
配列類似性	Belongs to the transient receptor (TC 1.A.4) family. STrpC subfamily. TRPC6 sub-subfamily. Contains 4 ANK repeats.
細胞内局在	Membrane.

## 画像



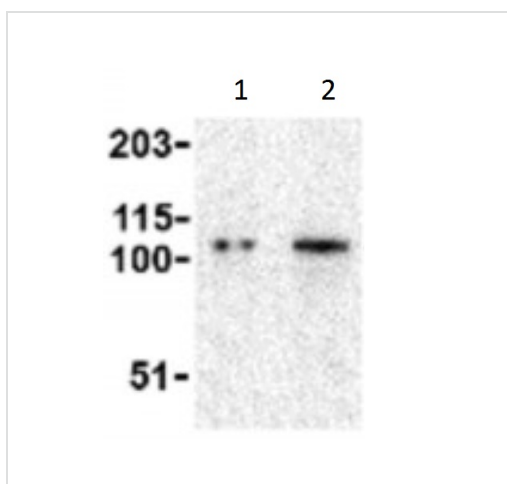
K562 (human chronic myelogenous leukemia cell line from bone marrow) cells stained for TRPC6 (red) using ab62461 (5 µg/ml) in ICC/IF.

Immunocytochemistry/ Immunofluorescence - Anti-TRPC6 antibody (ab62461)



Paraffin embedded mouse lung tissue stained for TRPC6 with ab62461 (10 µg/ml) in immunohistochemical analysis.

Immunohistochemistry (Formalin/PFA-fixed paraffin-embedded sections) - Anti-TRPC6 antibody (ab62461)



**Lane 1** : Anti-TRPC6 antibody (ab62461) at 0.5 µg/ml

**Lane 2** : Anti-TRPC6 antibody (ab62461) at 1 µg/ml

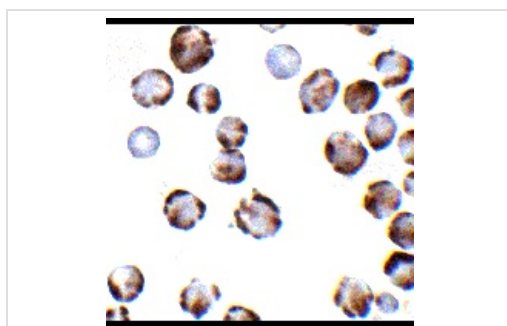
**All lanes** : K562 cell lysate

Lysates/proteins at 15 µg per lane.

**Predicted band size:** 106 kDa

**Observed band size:** 106 kDa

Western blot - Anti-TRPC6 antibody (ab62461)



K562 (human chronic myelogenous leukemia cell line from bone marrow) cells stained for TRPC6 using ab62461 (2 µg/ml) in ICC.

Immunocytochemistry/ Immunofluorescence - Anti-TRPC6 antibody (ab62461)

**Please note:** All products are "FOR RESEARCH USE ONLY AND ARE NOT INTENDED FOR DIAGNOSTIC OR THERAPEUTIC USE"

## **Our Abpromise to you: Quality guaranteed and expert technical support**

---

- Replacement or refund for products not performing as stated on the datasheet
- Valid for 12 months from date of delivery
- Response to your inquiry within 24 hours
  
- We provide support in Chinese, English, French, German, Japanese and Spanish
- Extensive multi-media technical resources to help you
- We investigate all quality concerns to ensure our products perform to the highest standards

If the product does not perform as described on this datasheet, we will offer a refund or replacement. For full details of the Abpromise, please visit <http://www.abcam.co.jp/abpromise> or contact our technical team.

## **Terms and conditions**

---

- Guarantee only valid for products bought direct from Abcam or one of our authorized distributors