

Product datasheet

Anti-TRPC4 antibody ab82133

画像数 1

製品の概要

製品名	Anti-TRPC4 antibody
製品の詳細	Goat polyclonal to TRPC4
由来種	Goat
アプリケーション	適用あり: WB, ELISA
種交差性	交差種: Rat 交差が予測される動物種: Mouse, Cow, Human
免疫原	Synthetic peptide: KHAKEEDSSIDYD by a Cysteine residue linker, corresponding to C terminal amino acids 948-960 of TRPC4 Run BLAST with Run BLAST with
ポジティブ・コントロール	Rat brain lysate

製品の特性

製品の状態	Liquid
保存方法	Shipped at 4°C. Upon delivery aliquot and store at -20°C or -80°C. Avoid repeated freeze / thaw cycles.
バッファー	Preservative: 0.02% Sodium Azide Constituents: 0.5% BSA, Tris buffered saline, pH 7.3
精製度	Immunogen affinity purified
特記事項 (精製)	Purified from goat serum by ammonium sulphate precipitation followed by antigen affinity chromatography using the immunizing peptide.
ポリ/モノ	ポリクローナル
アイソタイプ	IgG

アプリケーション

Our [Abpromise guarantee](#) covers the use of **ab82133** in the following tested applications.

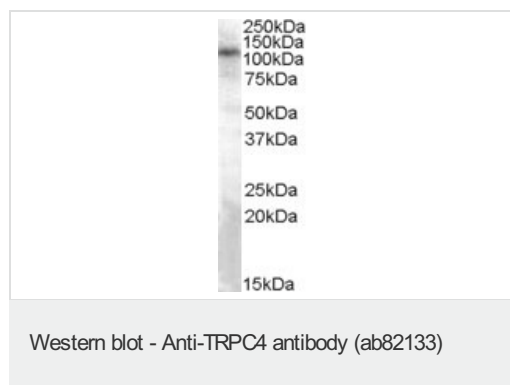
The application notes include recommended starting dilutions; optimal dilutions/concentrations should be determined by the end user.

アプリケーション	Abreviews	特記事項
WB		Use a concentration of 0.3 - 1 µg/ml. Detects a band of approximately 110 kDa (predicted molecular weight: 112 kDa).
ELISA		Use at an assay dependent dilution.

ターゲット情報

機能	Form a receptor-activated non-selective calcium permeant cation channel. Acts as a cell-cell contact-dependent endothelial calcium entry channel. Probably operated by a phosphatidylinositol second messenger system activated by receptor tyrosine kinases or G-protein coupled receptors. Mediates cation entry, with an enhanced permeability to barium over calcium. May also be activated by intracellular calcium store depletion.
組織特異性	Strongly expressed in placenta. Expressed at lower levels in heart, pancreas, kidney and brain. Expressed in endothelial cells. Isoform alpha was found to be the predominant isoform. Isoform beta was not found in pancreas and brain.
配列類似性	Belongs to the transient receptor (TC 1.A.4) family. STrpC subfamily. TRPC4 sub-subfamily. Contains 4 ANK repeats.
ドメイン	The protein 4.1-binding domain (654-685) is required for binding to EPB41L2 and channel activation. The calmodulin- and inositol 1,4,5-trisphosphate receptor-binding (CIRB) domain (695-724) is sufficient for the interaction with SESTD1. The spectrin-binding domain (730-758) is required for binding to SPTAN1 and SPTBN5.
翻訳後修飾	Phosphorylation modulates TRPC channel function by regulating the level of TRPC4 at the cell surface and by increasing the association with SLC9A3R1/NHERF.
細胞内局在	Membrane. Cell membrane. Enhanced insertion into the cell membrane after activation of the EGF receptor.

画像



Anti-TRPC4 antibody (ab82133) at 0.3 µg/ml
+ Rat brain lysate 35 ug in RIPA buffer

Predicted band size: 112 kDa

Primary incubation was 1 hour. Detected by chemiluminescence

Please note: All products are "FOR RESEARCH USE ONLY AND ARE NOT INTENDED FOR DIAGNOSTIC OR THERAPEUTIC USE"

Our Abpromise to you: Quality guaranteed and expert technical support

- Replacement or refund for products not performing as stated on the datasheet
- Valid for 12 months from date of delivery
- Response to your inquiry within 24 hours

- We provide support in Chinese, English, French, German, Japanese and Spanish
- Extensive multi-media technical resources to help you
- We investigate all quality concerns to ensure our products perform to the highest standards

If the product does not perform as described on this datasheet, we will offer a refund or replacement. For full details of the Abpromise, please visit <http://www.abcam.co.jp/abpromise> or contact our technical team.

Terms and conditions

- Guarantee only valid for products bought direct from Abcam or one of our authorized distributors