

## Product datasheet

# Anti-TPCN1 antibody ab94731

★★★★☆ 1 Abreviews [画像数 3](#)

### 製品の概要

製品名	Anti-TPCN1 antibody
製品の詳細	Rabbit polyclonal to TPCN1
由来種	Rabbit
アプリケーション	<b>適用あり:</b> ICC/IF, WB
種交差性	<b>交差種:</b> Human, Zebrafish <b>交差が予測される動物種:</b> Mouse, Rat, Rabbit, Horse, Chicken, Guinea pig, Cow, Dog
免疫原	Synthetic peptide corresponding to a region within N terminal amino acids 72-121 (QEAAIYLQEG ENNDKFFTHP KDAKALAAYL FAHNHLFYLM ELATAALLLLL) of Human TPCN1 (NP_060371). <a href="#">Run BLAST with ExPASy</a> <a href="#">Run BLAST with NCBI</a>
ポジティブ・コントロール	HT1080 cell lysate

### 製品の特性

製品の状態	Liquid
保存方法	Shipped at 4°C. Upon delivery aliquot and store at -20°C. Avoid repeated freeze / thaw cycles.
バッファー	Preservative: None Constituents: 2% Sucrose, PBS
精製度	Immunogen affinity purified
ポリ/モノ	ポリクローナル
アイソタイプ	IgG

### アプリケーション

Our [Abpromise guarantee](#) covers the use of **ab94731** in the following tested applications.

The application notes include recommended starting dilutions; optimal dilutions/concentrations should be determined by the end user.

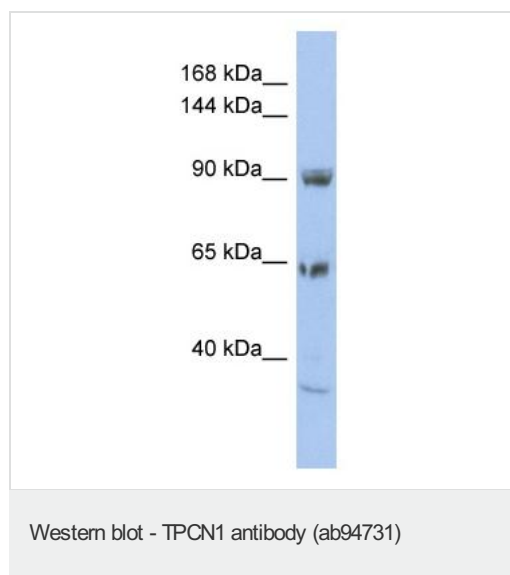
アプリケーション	Abreviews	特記事項
ICC/IF	★★★★☆	1/200.

アプリケーション	Abreviews	特記事項
WB		Use a concentration of 1 µg/ml. Predicted molecular weight: 94 kDa. Good results were obtained when blocked with 5% non-fat dry milk in 0.05% PBS-T.

## ターゲット情報

機能	Nicotinic acid adenine dinucleotide phosphate (NAADP) receptor that may function as one of the major voltage-gated Ca(2+) channels (VDCC) across the lysosomal and endosomal membrane.
組織特異性	Highest expression found in the heart and kidney, and lowest expression found in the spleen.
配列類似性	Belongs to the calcium channel alpha-1 subunit (TC 1.A.1.11) family. Two pore calcium channel subfamily.
ドメイン	Each of the two internal repeats contains five hydrophobic transmembrane segments (S1, S2, S3, S5, S6) and one positively charged transmembrane segment (S4). S4 segments probably represent the voltage-sensor and are characterized by a series of positively charged amino acids at every third position.
細胞内局在	Lysosome membrane. Endosome membrane.

## 画像



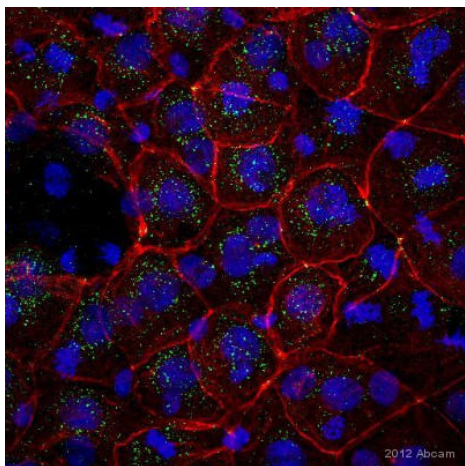
Anti-TPCN1 antibody (ab94731) at 1 µg/ml (in 5% skim milk / PBS buffer) + HT1080 cell lysate at 10 µg

### Secondary

HRP conjugated anti-Rabbit IgG at 1/50000 dilution

**Predicted band size:** 94 kDa

Gel concentration: 6-18%



Immunocytochemistry/ Immunofluorescence - Anti-TPCN1 antibody (ab94731)

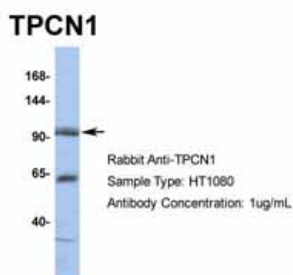
This image is courtesy of an anonymous Abreview

ab94731 staining TPCN1 in Zebrafish 1000-cell embryo by ICC/IF

(Immunocytochemistry/immunofluorescence).

Cells were fixed with paraformaldehyde and blocked with 1% BSA for 1 hour at 25°C.

Samples were incubated with primary antibody (1/200 in BSA in PBS-T) for 18 hours at 4°C. An AlexaFluor® 488-conjugated Goat-anti-rabbit IgG polyclonal (1/100) was used as the secondary antibody.



Western blot - Anti-TPCN1 antibody (ab94731)

Western Blot using ab94731 at 1.0ug/ml.

Sample type: Human HT1080 cell Lysate

**Please note:** All products are "FOR RESEARCH USE ONLY AND ARE NOT INTENDED FOR DIAGNOSTIC OR THERAPEUTIC USE"

### Our Abpromise to you: Quality guaranteed and expert technical support

- Replacement or refund for products not performing as stated on the datasheet
- Valid for 12 months from date of delivery
- Response to your inquiry within 24 hours
- We provide support in Chinese, English, French, German, Japanese and Spanish
- Extensive multi-media technical resources to help you
- We investigate all quality concerns to ensure our products perform to the highest standards

If the product does not perform as described on this datasheet, we will offer a refund or replacement. For full details of the Abpromise, please visit <http://www.abcam.co.jp/abpromise> or contact our technical team.

### Terms and conditions

- Guarantee only valid for products bought direct from Abcam or one of our authorized distributors