

Product datasheet

Anti-TOX4 antibody ab66651

画像数 1

製品の概要

製品名	Anti-TOX4 antibody
製品の詳細	Rabbit polyclonal to TOX4
アプリケーション	適用あり: WB, ELISA
種交差性	交差種: Human 交差が予測される動物種: Mouse, Rat, Rabbit, Goat, Horse, Chicken, Guinea pig, Cow, Cat, Dog, Pig, Zebrafish ▲
免疫原	Synthetic peptide: MEFPGGNDNY LTITGPSHPF LSGAETFHTP SLGDEEFEIP PISLDSDSL, corresponding to a region within N terminal amino acids 1-50 of Human TOX4 <a href="#">Run BLAST with ExPASy</a> <a href="#">Run BLAST with NCBI</a>
ポジティブ・コントロール	TOX4 transfected 293T lysate.

製品の特性

製品の状態	Liquid
保存方法	Shipped at 4°C. Upon delivery aliquot and store at -20°C. Avoid freeze / thaw cycles.
バッファー	Preservative: None Constituents: 2% Sucrose, PBS
精製度	Protein A purified
ポリ/モノ	ポリクローナル
アイソタイプ	IgG

アプリケーション

Our [Abpromise guarantee](#) covers the use of **ab66651** in the following tested applications.

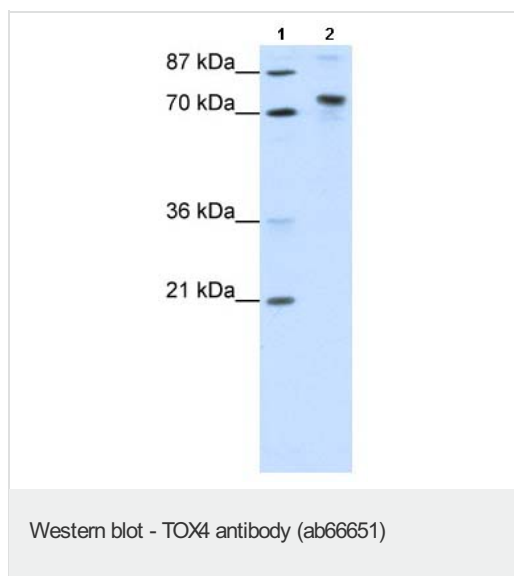
The application notes include recommended starting dilutions; optimal dilutions/concentrations should be determined by the end user.

アプリケーション	Abreviews	特記事項
WB		Use a concentration of 1.25 µg/ml. Detects a band of approximately 74 kDa (predicted molecular weight: 66 kDa). Good results were obtained when blocked with 5% non-fat dry milk in 0.05% PBS-T.

ELISA                      Use at an assay dependent concentration.  
Titre using peptide based assay: 1/12500.

ターゲット情報

Anti-TOX4 antibody 画像



**All lanes** : Anti-TOX4 antibody (ab66651) at 1.25 µg/ml

**Lane 1** : Molecular Weight Markers

**Lane 2** : Transfected 293T lysate at 10 µg

**Secondary**

HRP conjugated anti-Rabbit IgG at 1/50000 dilution

**Predicted band size** : 66 kDa

**Observed band size** : 74 kDa

**Additional bands at** : 100 kDa. We are unsure as to the identity of these extra bands.

**Please note:** All products are "FOR RESEARCH USE ONLY AND ARE NOT INTENDED FOR DIAGNOSTIC OR THERAPEUTIC USE"

**Our Abpromise to you: Quality guaranteed and expert technical support**

- Replacement or refund for products not performing as stated on the datasheet
- Valid for 12 months from date of delivery
- Response to your inquiry within 24 hours
- We provide support in Chinese, English, French, German, Japanese and Spanish
- Extensive multi-media technical resources to help you
- We investigate all quality concerns to ensure our products perform to the highest standards

If the product does not perform as described on this datasheet, we will offer a refund or replacement. For full details of the Abpromise, please visit <http://www.abcam.co.jp/abpromise> or contact our technical team.

**Terms and conditions**

- Guarantee only valid for products bought direct from Abcam or one of our authorized distributors