

## Product datasheet

# Anti-TIM 1 antibody ab47635

1 References [画像数 4](#)

### 製品の概要

製品名	Anti-TIM 1 antibody
製品の詳細	Rabbit polyclonal to TIM 1
由来種	Rabbit
アプリケーション	<b>適用あり:</b> ICC/IF, WB, IHC-P
種交差性	<b>交差種:</b> Mouse, Human
免疫原	A 16 amino acid peptide from near the amino terminus of human TIM 1.
ポジティブ・コントロール	Human Uterus Tissue Lysate.

### 製品の特性

製品の状態	Liquid
保存方法	Shipped at 4°C. Store at +4°C.
バッファー	Preservative: 0.02% Sodium Azide Constituents: PBS
精製度	Immunogen affinity purified
ポリ/モノ	ポリクローナル
アイソタイプ	IgG

### アプリケーション

Our [Abpromise guarantee](#) covers the use of **ab47635** in the following tested applications.

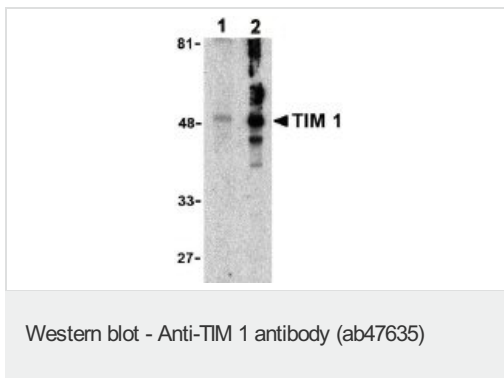
The application notes include recommended starting dilutions; optimal dilutions/concentrations should be determined by the end user.

アプリケーション	Abreviews	特記事項
ICC/IF		Use a concentration of 5 µg/ml.
WB		Use a concentration of 1 - 2 µg/ml. Predicted molecular weight: 39 kDa.
IHC-P		Use a concentration of 10 µg/ml.

## ターゲット情報

機能	May play a role in T-helper cell development and the regulation of asthma and allergic diseases. Receptor for TIMD4 (By similarity). In case of human hepatitis A virus (HHAV) infection, functions as a cell-surface receptor for the virus. May play a role in kidney injury and repair.
組織特異性	Widely expressed, with highest levels in kidney and testis. Expressed by activated CD4+ T-cells during the development of helper T-cells responses.
配列類似性	Belongs to the immunoglobulin superfamily. TIM family. Contains 1 Ig-like V-type (immunoglobulin-like) domain.
細胞内局在	Membrane.

## 画像



**Lane 1** : Anti-TIM 1 antibody (ab47635) at 1  $\mu\text{g/ml}$

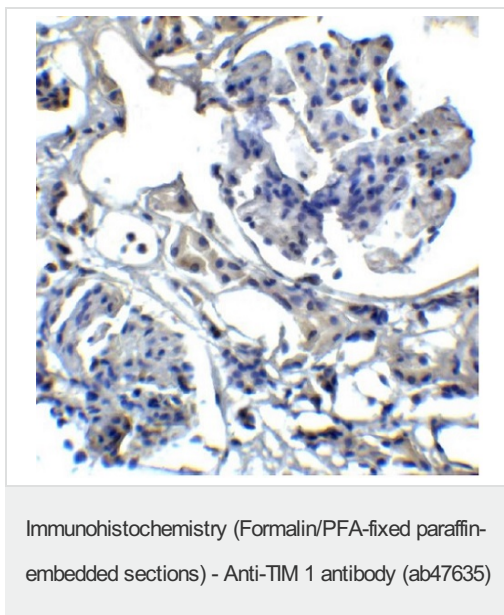
**Lane 2** : Anti-TIM 1 antibody (ab47635) at 2  $\mu\text{g/ml}$

**All lanes** : Human Uterus Tissue Lysate

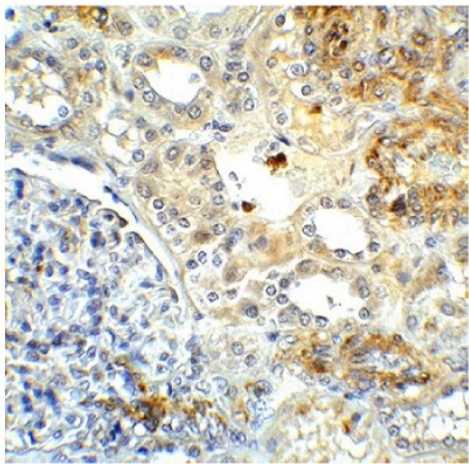
Lysates/proteins at 15  $\mu\text{g}$  per lane.

**Predicted band size:** 39 kDa

**Observed band size:** 50 kDa

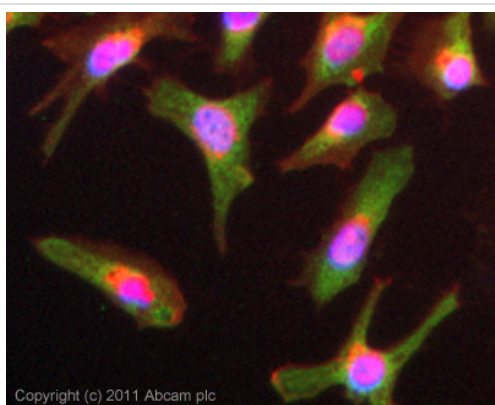


Ab47635 at 5  $\mu\text{g/ml}$  staining TIM1 in normal human kidney tissue section by Immunohistochemistry ( IHC-P-Formalin/PFA fixed paraffin-embedded sections).



Immunohistochemistry (Formalin/PFA-fixed paraffin-embedded sections) - Anti-TIM 1 antibody (ab47635)

Ab47635 at 5µg/ml staining TIM1 in human kidney carcinoma tissue section by Immunohistochemistry (IHC-P-Formalin/PFA fixed paraffin-embedded sections).



Immunocytochemistry/ Immunofluorescence - Anti-TIM 1 antibody (ab47635)

ICC/IF image of ab47635 stained HeLa cells. The cells were 4% formaldehyde (10 min) and then incubated in 1%BSA / 10% normal goat serum / 0.3M glycine in 0.1% PBS-Tween for 1h to permeabilise the cells and block non-specific protein-protein interactions. The cells were then incubated with the antibody (ab47635, 5µg/ml) overnight at +4°C. The secondary antibody (green) was for 1h. Alexa Fluor® 594 WGA was used to label plasma membranes (red) at a 1/200 dilution for 1h. DAPI was used to stain the cell nuclei (blue) at a concentration of 1.43µM.

**Please note:** All products are "FOR RESEARCH USE ONLY AND ARE NOT INTENDED FOR DIAGNOSTIC OR THERAPEUTIC USE"

### Our Abpromise to you: Quality guaranteed and expert technical support

- Replacement or refund for products not performing as stated on the datasheet
- Valid for 12 months from date of delivery
- Response to your inquiry within 24 hours
- We provide support in Chinese, English, French, German, Japanese and Spanish
- Extensive multi-media technical resources to help you
- We investigate all quality concerns to ensure our products perform to the highest standards

If the product does not perform as described on this datasheet, we will offer a refund or replacement. For full details of the Abpromise, please visit <http://www.abcam.co.jp/abpromise> or contact our technical team.

## Terms and conditions

---

- Guarantee only valid for products bought direct from Abcam or one of our authorized distributors