

Product datasheet

Anti-THOC5 antibody [EPR6905(B)] ab124996

リコンビナント RabMAb®

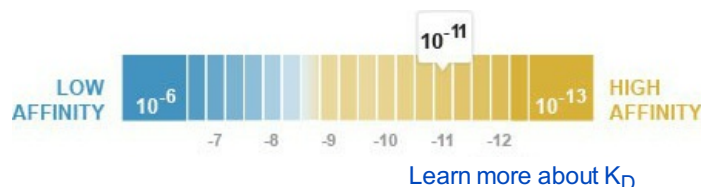
画像数 2

製品の概要

製品名	Anti-THOC5 antibody [EPR6905(B)]
製品の詳細	Rabbit monoclonal [EPR6905(B)] to THOC5
アプリケーション	適用あり: WB 適用なし: Flow Cyt, ICC, IHC-P or IP
種交差性	交差種: Mouse, Rat, Human
免疫原	Synthetic peptide corresponding to residues in Human THOC5.
ポジティブ・コントロール	293T, HeLa, NIH 3T3 and A549 cell lysates.
特記事項	This product is a recombinant rabbit monoclonal antibody. Our RabMAb® technology is a patented hybridoma-based technology for making rabbit monoclonal antibodies. For details on our patents, please refer to RabMAb® patents

製品の特性

製品の状態	Liquid
保存方法	Shipped at 4°C. Store at -20°C. Stable for 12 months at -20°C.
解離定数 (K _D 値)	K _D = 4.40 x 10 ⁻¹¹ M



バッファー	pH: 7.20 Preservative: 0.01% Sodium azide Constituents: 49% PBS, 50% Glycerol, 0.05% BSA
精製度	Tissue culture supernatant
ポリ/モノ	モノクローナル
クローン名	EPR6905(B)
アイソタイプ	IgG

アプリケーション

Our [Abpromise guarantee](#) covers the use of **ab124996** in the following tested applications.

The application notes include recommended starting dilutions; optimal dilutions/concentrations should be determined by the end user.

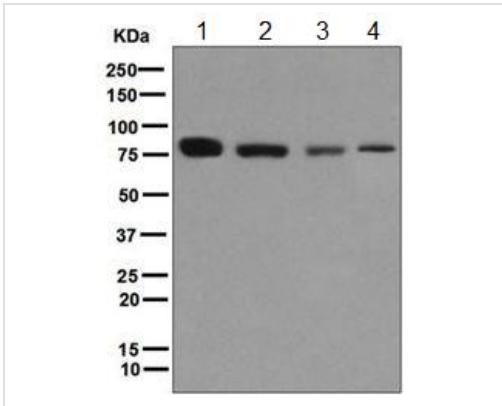
アプリケーション	Abreviews	特記事項
WB		1/1000 - 1/10000. Detects a band of approximately 79 kDa (predicted molecular weight: 79 kDa).

追加情報 Is unsuitable for Flow Cyt, ICC, IHC-P or IP.

ターゲット情報

機能	Component the THO subcomplex of the TREX complex. The TREX complex specifically associates with spliced mRNA and not with unspliced pre-mRNA. It is recruited to spliced mRNAs by a transcription-independent mechanism. Binds to mRNA upstream of the exon-junction complex (EJC) and is recruited in a splicing- and cap-dependent manner to a region near the 5' end of the mRNA where it functions in mRNA export. The recruitment occurs via an interaction between ALYREF/THOC4 and the cap-binding protein NCBP1. The TREX complex is essential for the export of Kaposi's sarcoma-associated herpesvirus (KSHV) intronless mRNAs and infectious virus production. The recruitment of the TREX complex to the intronless viral mRNA occurs via an interaction between KSHV ORF57 protein and ALYREF/THOC4. DDX39B functions as a bridge between ALYREF/THOC4 and the THO complex. THOC5 in conjunction with ALYREF/THOC4 functions in NXF1-NXT1 mediated nuclear export of HSP70 mRNA. Regulates the expression of myeloid transcription factors CEBPA, CEBPB and GAB2 by enhancing the levels of phosphatidylinositol 3,4,5-trisphosphate. May be involved in the differentiation of granulocytes and adipocytes. Essential for hematopoietic primitive cell survival and plays an integral role in monocytic development.
組織特異性	Ubiquitously expressed.
配列類似性	Belongs to the THOC5 family.
翻訳後修飾	Phosphorylated on tyrosine upon binding to activated CSF1R; which causes a dissociation of the two proteins. Phosphorylation on Ser-5 and/or Ser-6 is required for nuclear export. Phosphorylated on Thr-328 in insulin-stimulated adipocytes (By similarity). Phosphorylated upon DNA damage, probably by ATM or ATR.
細胞内局在	Nucleus. Cytoplasm. Shuttles between nucleus and cytoplasm.

画像



Western blot - Anti-THOC5 antibody [EPR6905(B)]
(ab124996)

All lanes : Anti-THOC5 antibody
[EPR6905(B)] (ab124996) at 1/1000 dilution

Lane 1 : 293T cell lysate

Lane 2 : HeLa cell lysate

Lane 3 : NIH 3T3 cell lysate

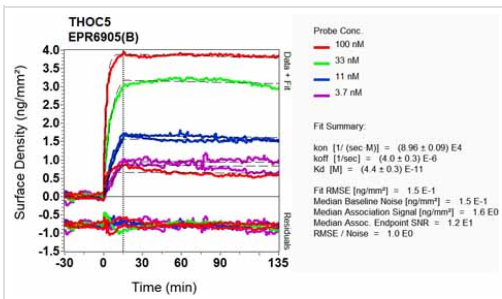
Lane 4 : A549 cell lysate

Lysates/proteins at 10 µg per lane.

Secondary

Goat anti-Rabbit HRP at 1/2000 dilution

Predicted band size : 79 kDa



Other-Anti-THOC5 antibody [EPR6905(B)]
(ab124996)

Equilibrium dissociation constant (K_D)

Learn more about K_D

[Click here to learn more about \$K_D\$](#)

Please note: All products are "FOR RESEARCH USE ONLY AND ARE NOT INTENDED FOR DIAGNOSTIC OR THERAPEUTIC USE"

Our Abpromise to you: Quality guaranteed and expert technical support

- Replacement or refund for products not performing as stated on the datasheet
- Valid for 12 months from date of delivery
- Response to your inquiry within 24 hours
- We provide support in Chinese, English, French, German, Japanese and Spanish
- Extensive multi-media technical resources to help you
- We investigate all quality concerns to ensure our products perform to the highest standards

If the product does not perform as described on this datasheet, we will offer a refund or replacement. For full details of the Abpromise, please visit <http://www.abcam.co.jp/abpromise> or contact our technical team.

Terms and conditions

- Guarantee only valid for products bought direct from Abcam or one of our authorized distributors