

Product datasheet

Anti-TDP43 antibody [2E2-D3] ab57105

11 References [画像数 8](#)

製品の概要

製品名	Anti-TDP43 antibody [2E2-D3]
製品の詳細	Mouse monoclonal [2E2-D3] to TDP43
由来種	Mouse
アプリケーション	適用あり: Flow Cyt, WB, ICC/IF, IHC-P, Sandwich ELISA
種交差性	交差種: Human
免疫原	<p>Recombinant full length protein (GST-tag) corresponding to Human TDP43 aa 1-261. The molecular weight of GST-tag is 26kDa.</p> <p>Sequence:</p> <pre>MSEYIRVTEDEENDEPIEIPSEDDGTVLLSTVTAQFPGACGLRYRNPVSQC MRGVRLVEGILHAPDAGWGNLVYVVNYPKDNKRKMDTDASSAVKVKRAV QKTSDLIVLGLPWKTTEQDLKEYFSTFGEVLMVQVKKDLKTGHSKGFV RFTEYETQVKVMSQRHMIDGRWCCKLPNSKQSQDEPLRSRKVFVGRCTE DMTEDELREFFSQYGDVMDVFIPKPFRAFAFVTFADDQIAQSLCGEDLII KGISVHISNA</pre> <p>Database link: Q13148</p>

[Run BLAST with](#)

[Run BLAST with](#)

特記事項

Abcam is committed to meeting high standards of ethical manufacturing and has decided to discontinue this product by June 2019 as it has been generated by the ascites method. We are sorry for any inconvenience this may cause. We would recommend antibody [ab109535](#) or [ab190963](#) as a replacement.

製品の特性

製品の状態	Liquid
保存方法	Shipped at 4°C. Upon delivery aliquot and store at -20°C or -80°C. Avoid repeated freeze / thaw cycles.
バッファー	Preservative: None PBS, pH 7.2
精製度	Protein G purified
ポリ/モノ	モノクローナル
クローン名	2E2-D3

アイソタイプ	IgG1
軽鎖の種類	kappa

アプリケーション

Our [Abpromise guarantee](#) covers the use of **ab57105** in the following tested applications.

The application notes include recommended starting dilutions; optimal dilutions/concentrations should be determined by the end user.

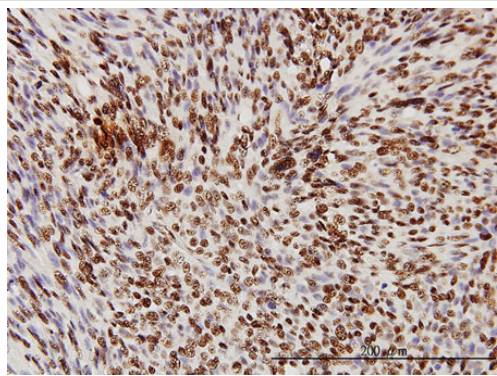
アプリケーション	Abreviews	特記事項
Flow Cyt		Use 1-2µg for 10 ⁶ cells. ab170190 - Mouse monoclonal IgG1, is suitable for use as an isotype control with this antibody.
WB		Use a concentration of 1 - 5 µg/ml.
ICC/IF		Use a concentration of 10 µg/ml.
IHC-P		Use a concentration of 5 µg/ml.
Sandwich ELISA		Use at an assay dependent concentration.

ターゲット情報

機能	DNA and RNA-binding protein which regulates transcription and splicing. Involved in the regulation of CFTR splicing. It promotes CFTR exon 9 skipping by binding to the UG repeated motifs in the polymorphic region near the 3'-splice site of this exon. The resulting aberrant splicing is associated with pathological features typical of cystic fibrosis. May also be involved in microRNA biogenesis, apoptosis and cell division. Can repress HIV-1 transcription by binding to the HIV-1 long terminal repeat. Stabilizes the low molecular weight neurofilament (NFL) mRNA through a direct interaction with the 3' UTR.
組織特異性	Ubiquitously expressed. In particular, expression is high in pancreas, placenta, lung, genital tract and spleen.
関連疾患	Defects in TARDBP are the cause of amyotrophic lateral sclerosis type 10 (ALS10) [MIM:612069]. ALS is a neurodegenerative disorder affecting upper and lower motor neurons and resulting in fatal paralysis. Sensory abnormalities are absent. Death usually occurs within 2 to 5 years. The etiology of ALS is likely to be multifactorial, involving both genetic and environmental factors. The disease is inherited in 5-10% of the cases.
配列類似性	Contains 2 RRM (RNA recognition motif) domains.
ドメイン	The RRM domains can bind to both DNA and RNA.
翻訳後修飾	Hyperphosphorylated in hippocampus, neocortex, and spinal cord from individuals affected with ALS and FTLDU. Ubiquitinated in hippocampus, neocortex, and spinal cord from individuals affected with ALS and FTLDU. Cleaved to generate C-terminal fragments in hippocampus, neocortex, and spinal cord from individuals affected with ALS and FTLDU.
細胞内局在	Nucleus. In patients with frontotemporal lobar degeneration and amyotrophic lateral sclerosis, it

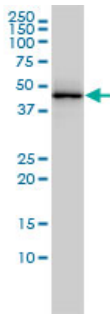
is absent from the nucleus of affected neurons but it is the primary component of cytoplasmic ubiquitin-positive inclusion bodies.

画像



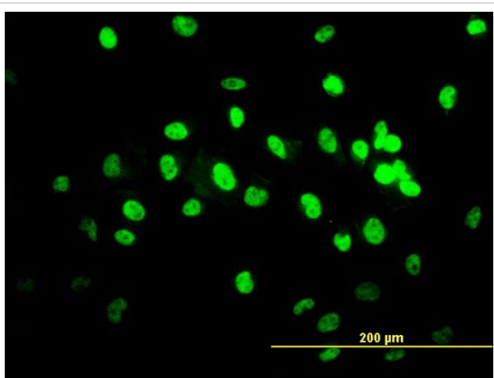
ab57105 staining TDP43 in human leiomyosarcoma tissue. Antibody concentration 3μg/ml.

Immunohistochemistry (Formalin/PFA-fixed paraffin-embedded sections) - Anti-TDP43 antibody [2E2-D3] (ab57105)



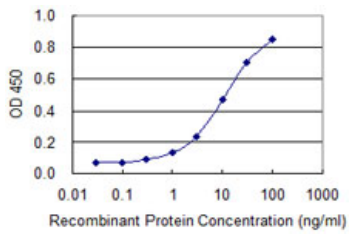
TDP43 antibody (ab57105) at 1ug/lane + A-431 cell lysate at 25ug/lane.

Western blot - Anti-TDP43 antibody [2E2-D3] (ab57105)



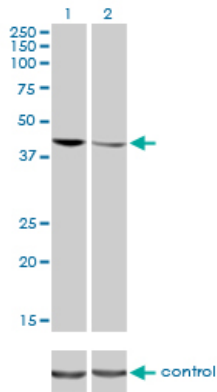
ab57105 staining TDP43 in HeLa cells. Antibody concentration 10μg/ml.

Immunofluorescence - Anti-TDP43 antibody [2E2-D3] (ab57105)



Detection limit for recombinant GST tagged TDP43 is 0.3 ng/ml as a capture antibody.

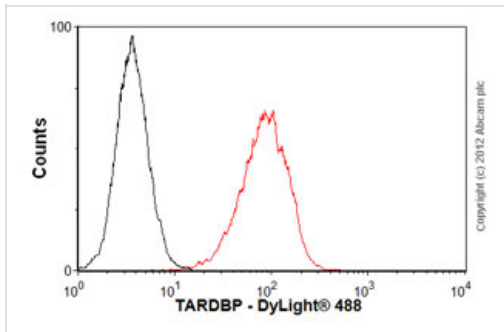
Sandwich ELISA - Anti-TDP43 antibody [2E2-D3] (ab57105)



ab57105 staining TDP43 overexpressed in the HEK293 cell line (cotransfected with TDP43 validated Chimera siRNA) (lane 1) or non-transfected control (lane 2).

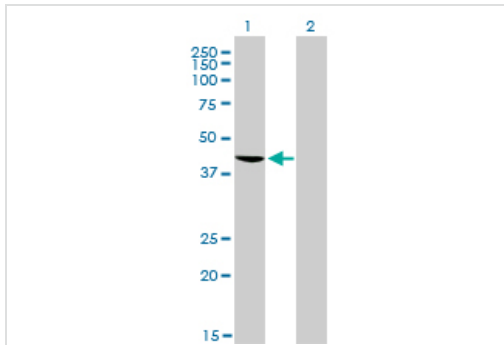
GAPDH used as a specificity and loading control.

Western blot - Anti-TDP43 antibody [2E2-D3] (ab57105)



Flow Cytometry - Anti-TDP43 antibody [2E2-D3]
(ab57105)

Overlay histogram showing HeLa cells stained with ab57105 (red line). The cells were fixed with 80% methanol (5 min) and then permeabilized with 0.1% PBS-Tween for 20 min. The cells were then incubated in 1x PBS / 10% normal goat serum / 0.3M glycine to block non-specific protein-protein interactions followed by the antibody (ab57105, 1µg/1x10⁶ cells) for 30 min at 22°C. The secondary antibody used was DyLight® 488 goat anti-mouse IgG (H+L) (ab96879) at 1/500 dilution for 30 min at 22°C. Isotype control antibody (black line) was mouse IgG1 [CIGG1] (ab91353, 2µg/1x10⁶ cells) used under the same conditions. Acquisition of >5,000 events was performed. This antibody gave a positive signal in HeLa cells fixed with 4% paraformaldehyde (10 min)/permeabilized with 0.1% PBS-Tween for 20 min used under the same conditions.



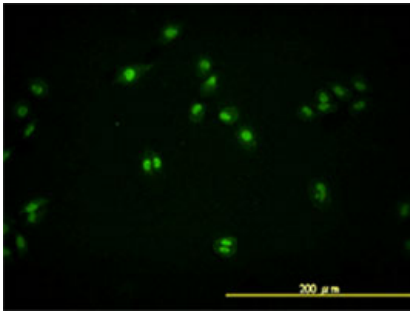
Western blot - Anti-TDP43 antibody [2E2-D3]
(ab57105)

All lanes : Anti-TDP43 antibody [2E2-D3]
(ab57105) at 5 µg/ml

Lane 1 : HEK-293T (human epithelial cell line from embryonic kidney transformed with large T antigen) transfected with TDP43, cell lysate

Lane 2 : Untransfected HEK-293T cell lysate

Developed using the ECL technique.



TARDBP antibody (ab57105) used in immunofluorescence at 10ug/ml on HeLa cells.

Immunocytochemistry/ Immunofluorescence - Anti-TDP43 antibody [2E2-D3] (ab57105)

Please note: All products are "FOR RESEARCH USE ONLY AND ARE NOT INTENDED FOR DIAGNOSTIC OR THERAPEUTIC USE"

Our Abpromise to you: Quality guaranteed and expert technical support

- Replacement or refund for products not performing as stated on the datasheet
- Valid for 12 months from date of delivery
- Response to your inquiry within 24 hours
- We provide support in Chinese, English, French, German, Japanese and Spanish
- Extensive multi-media technical resources to help you
- We investigate all quality concerns to ensure our products perform to the highest standards

If the product does not perform as described on this datasheet, we will offer a refund or replacement. For full details of the Abpromise, please visit <http://www.abcam.co.jp/abpromise> or contact our technical team.

Terms and conditions

- Guarantee only valid for products bought direct from Abcam or one of our authorized distributors