

Product datasheet

Anti-TCR alpha + TCR beta antibody [R73] ab91121

1 References [画像数 1](#)

製品の概要

製品名	Anti-TCR alpha + TCR beta antibody [R73]
製品の詳細	Mouse monoclonal [R73] to TCR alpha + TCR beta
由来種	Mouse
アプリケーション	適用あり: WB, IP, Flow Cyt, IHC-Fr
種交差性	交差種: Rat
免疫原	Tissue/ cell preparation - Rat T blasts and Rat erythrocytes.
ポジティブ・コントロール	LOU Rat splenocytes

製品の特性

製品の状態	Liquid
保存方法	Shipped at 4°C. Store at +4°C short term (1-2 weeks). Store at -20°C or -80°C. Avoid freeze / thaw cycle.
バッファー	Preservative: 0.09% Sodium Azide Constituents: PBS, 150mM Sodium chloride, pH 7.2
精製度	Protein G purified
ポリ/モノ	モノクローナル
クローン名	R73
アイソタイプ	IgG1

アプリケーション

Our [Abpromise guarantee](#) covers the use of **ab91121** in the following tested applications.

The application notes include recommended starting dilutions; optimal dilutions/concentrations should be determined by the end user.

アプリケーション	Abreviews	特記事項
WB		
IP		

Flow Cyt

IHC-Fr

追加情報

Flow Cyt: Use 0.25 µg for 10⁶ cells and use a 100 µl total staining volume

IHC-Fr: Use at an assay dependent dilution.

IP: Use at an assay dependent dilution.

WB: Use at an assay dependent dilution.

Not yet tested in other applications.

Optimal dilutions/concentrations should be determined by the end user.

ターゲット情報

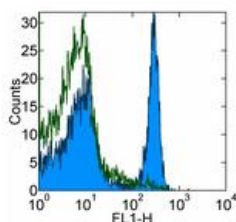
関連性

The receptors on T cells consist of immunoglobulin like integral membrane glycoproteins containing 2 polypeptide subunits, alpha and beta, of similar molecular weight, 40 to 55 kD in the human. Like the immunoglobulins of the B cells, each T cell receptor subunit has, external to the cell membrane, an N terminal variable domain and a C terminal constant domain. T cell receptors recognise foreign antigens which have been processed as small peptides and bound to major histocompatibility complex molecules at the surface of antigen presenting cells. Each T cell receptor is a dimer consisting of one alpha and one beta chain or one delta and one gamma chain. In a single cell, the T cell receptor loci are rearranged and expressed in the order delta, gamma, beta, and alpha. If both delta and gamma rearrangements produce functional chains, the cell expresses delta and gamma. If not, the cell proceeds to rearrange the beta and alpha loci.

細胞内局在

Type I membrane protein.

画像



Flow Cytometry - Anti-TCR alpha + TCR beta
antibody [R73] (ab91121)

Staining of LOU Rat splenocytes with ab91121 at 0.125 µg (blue histogram), or purified Mouse IgG1k, isotype control at 0.5 µg (green histogram), followed by treatment with FITC anti-mouse IgG. Total viable cells were used for analysis.

Please note: All products are "FOR RESEARCH USE ONLY AND ARE NOT INTENDED FOR DIAGNOSTIC OR THERAPEUTIC USE"

Our Abpromise to you: Quality guaranteed and expert technical support

- Replacement or refund for products not performing as stated on the datasheet
- Valid for 12 months from date of delivery
- Response to your inquiry within 24 hours

- We provide support in Chinese, English, French, German, Japanese and Spanish
- Extensive multi-media technical resources to help you
- We investigate all quality concerns to ensure our products perform to the highest standards

If the product does not perform as described on this datasheet, we will offer a refund or replacement. For full details of the Abpromise, please visit <http://www.abcam.co.jp/abpromise> or contact our technical team.

Terms and conditions

- Guarantee only valid for products bought direct from Abcam or one of our authorized distributors