


Product datasheet

Anti-TCP10L antibody ab64426

画像数 2

製品の概要

製品名	Anti-TCP10L antibody
製品の詳細	Rabbit polyclonal to TCP10L
アプリケーション	適用あり: WB, IHC-P
種交差性	交差種: Human 交差が予測される動物種: Chimpanzee 
免疫原	A 14-22 amino acid region within synthetic peptide: ASPHAGQESH TLALEPAFGK ISPLSADEET IPKYAGHKNQ SATLLGQRSS, corresponding to internal sequence amino acids 109-158 of Human TCP10L Run BLAST with ExPASy Run BLAST with NCBI
ポジティブ・コントロール	HepG2 cell lysate, Human heart tissue

製品の特性

製品の状態	Liquid
保存方法	Shipped at 4°C. Upon delivery aliquot and store at -20°C. Avoid freeze / thaw cycles.
バッファー	Preservative: None Constituents: 2% Sucrose, PBS
精製度	Protein A purified
ポリ/モノ	ポリクローナル
アイソタイプ	IgG

アプリケーション

Our [Abpromise guarantee](#) covers the use of **ab64426** in the following tested applications.

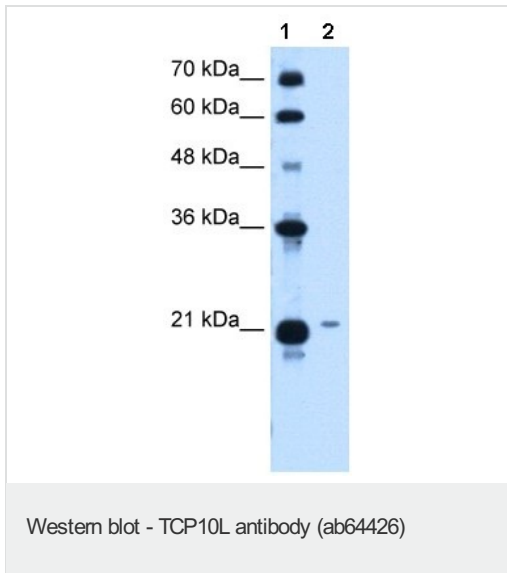
The application notes include recommended starting dilutions; optimal dilutions/concentrations should be determined by the end user.

アプリケーション	Abreviews	特記事項
WB		Use a concentration of 1.25 µg/ml. Detects a band of approximately 24 kDa (predicted molecular weight: 24 kDa). Good results were obtained when blocked with 5% non-fat dry milk in 0.05% PBS-T.
IHC-P		Use a concentration of 4 - 8 µg/ml.

ターゲット情報

関連性	TCP10L belongs to the TCP10 family and is a human leucine zipper protein with transcription inhibition activity.
細胞内局在	Nuclear

Anti-TCP10L antibody 画像



All lanes : Anti-TCP10L antibody (ab64426)
at 1.25 µg/ml

Lane 1 : Molecular weight markers

Lane 2 : HepG2 cell lysate at 10 µg

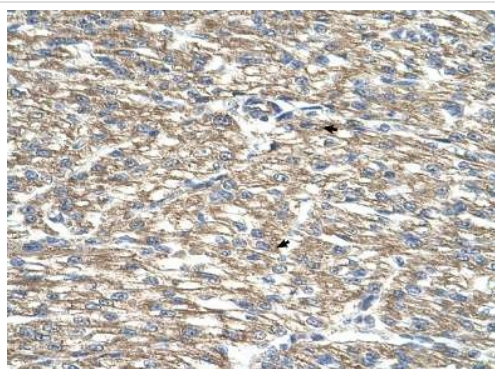
Secondary

Lane 2 : HRP conjugated anti-Rabbit IgG at
1/50000 dilution

Predicted band size : 24 kDa

Observed band size : 24 kDa

Diluted in 5% skim milk / PBS buffer, gel
concentration 12%



Immunohistochemistry (Formalin/PFA-fixed paraffin-
embedded sections) - TCP10L antibody (ab64426)

Immunohistochemistry (Formalin/PFA-fixed
paraffin-embedded sections) analysis of
human heart tissue labelling TCP10L with
ab64426 at 4-8µg/ml. Arrows indicate
positively labelled myocardial cells.
Magnification: 400X.

Please note: All products are "FOR RESEARCH USE ONLY AND ARE NOT INTENDED FOR DIAGNOSTIC OR THERAPEUTIC USE"

Our Promise to you: Quality guaranteed and expert technical support

- Replacement or refund for products not performing as stated on the datasheet
- Valid for 12 months from date of delivery
- Response to your inquiry within 24 hours
- We provide support in Chinese, English, French, German, Japanese and Spanish

- Extensive multi-media technical resources to help you
- We investigate all quality concerns to ensure our products perform to the highest standards

If the product does not perform as described on this datasheet, we will offer a refund or replacement. For full details of the Abpromise, please visit <http://www.abcam.co.jp/abpromise> or contact our technical team.

Terms and conditions

- Guarantee only valid for products bought direct from Abcam or one of our authorized distributors