

Product datasheet

Anti-Survivin antibody [EP2880Y] ab76424

リコンビナント RabMAb®

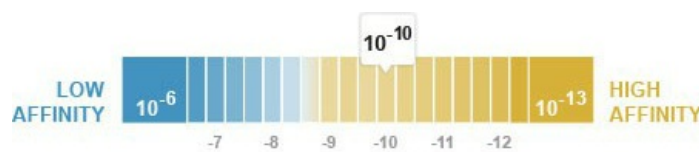
★★★★★ 6 Abreviews 22 References 画像数 13

製品の概要

製品名	Anti-Survivin antibody [EP2880Y]
製品の詳細	Rabbit monoclonal [EP2880Y] to Survivin
アプリケーション	適用あり: IHC-P, WB, IP, Flow Cyt, ICC/IF, Sandwich ELISA
種交差性	交差種: Human
免疫原	Synthetic peptide within Human Survivin aa 1-100 (N terminal). The exact sequence is proprietary. Database link: O15392
ポジティブ・コントロール	HeLa and Jurkat lysates; human urinary bladder carcinoma and human colonic adenocarcinoma tissues.
特記事項	A trial size is available to purchase for this antibody. Mouse, Rat: We have preliminary internal testing data to indicate this antibody may not react with these species. Please contact us for more information. Our RabMAb® technology is a patented hybridoma-based technology for making rabbit monoclonal antibodies. For details on our patents, please refer to RabMAb® patents This product is a recombinant rabbit monoclonal antibody.

製品の特性

製品の状態	Liquid
保存方法	Shipped at 4°C. Upon delivery aliquot and store at -20°C. Avoid freeze / thaw cycles.
解離定数 (K_D 値)	K _D = 4.40 x 10 ⁻¹⁰ M



[Learn more about K_D](#)

バッファー	pH: 7.20 Preservative: 0.01% Sodium azide Constituents: PBS, 50% Glycerol, 0.05% BSA
--------------	--

精製度	Tissue culture supernatant
ポリ/モノ	モノクローナル
クローン名	EP2880Y
アイソタイプ	IgG

アプリケーション

Our [Abpromise guarantee](#) covers the use of **ab76424** in the following tested applications.

The application notes include recommended starting dilutions; optimal dilutions/concentrations should be determined by the end user.

アプリケーション	Abreviews	特記事項
IHC-P	★★★★★	1/250 - 1/500. Perform heat mediated antigen retrieval before commencing with IHC staining protocol. Signal amplification system might be necessary or the use of polymerized HRP secondary antibodies.
WB	★★★★☆	1/5000 - 1/20000. Detects a band of approximately 16 kDa (predicted molecular weight: 16 kDa).
IP		1/10.
Flow Cyt		1/50. ab172730 - Rabbit monoclonal IgG, is suitable for use as an isotype control with this antibody.
ICC/IF	★★★★★	1/100 - 1/250.
Sandwich ELISA		Use a concentration of 0.5 µg/ml. Can be paired for Sandwich ELISA with Goat polyclonal to Survivin (ab27468) . For sandwich ELISA, use this antibody as detection at 0.5µg/ml with ab27468 as capture.

ターゲット情報

機能	Component of the chromosomal passenger complex (CPC), a complex that acts as a key regulator of mitosis. The CPC complex has essential functions at the centromere in ensuring correct chromosome alignment and segregation and is required for chromatin-induced microtubule stabilization and spindle assembly. The complex with RAN plays a role in mitotic spindle formation by serving as a physical scaffold to help deliver the RAN effector molecule TPX2 to microtubules. May play a role in neoplasia. May counteract a default induction of apoptosis in G2/M phase. Inhibitor of caspase-3 and caspase-7. Isoform 2 and isoform 3 do not appear to play vital roles in mitosis. Isoform 3 shows a marked reduction in its anti-apoptotic effects when compared with the displayed wild-type isoform.
組織特異性	Expressed only in fetal kidney and liver, and to lesser extent, lung and brain. Abundantly expressed in adenocarcinoma (lung, pancreas, colon, breast, and prostate) and in high-grade lymphomas. Also expressed in various renal cell carcinoma cell lines.
配列類似性	Belongs to the IAP family. Contains 1 BIR repeat.
発生段階	Expression is cell cycle-dependent and peaks at mitosis.
ドメイン	The BIR repeat is necessary and sufficient for HBXIP binding.

翻訳後修飾

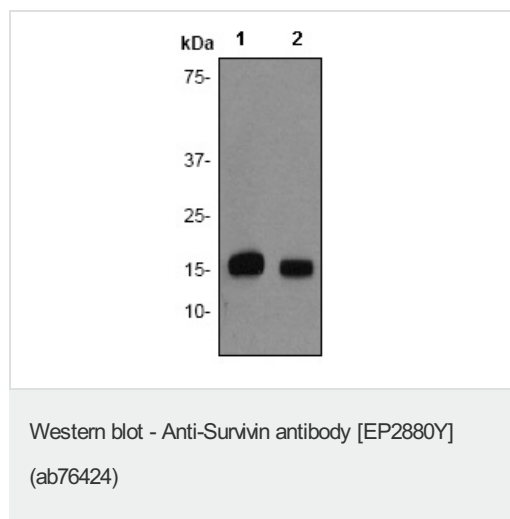
Ubiquitination is required for centrosomal targeting.

In vitro phosphorylation at Thr-117 by AURKB/STK12 prevents interaction with INCENP and localization to mitotic chromosomes.

細胞内局在

Cytoplasm. Nucleus. Chromosome. Chromosome > centromere. Cytoplasm > cytoskeleton > spindle. Localizes on chromosome arms and inner centromeres from prophase through metaphase and then transferring to the spindle midzone and midbody from anaphase through cytokinesis. Colocalizes with AURKB at mitotic chromosomes.

画像



All lanes : Anti-Survivin antibody [EP2880Y] (ab76424) at 1/10000 dilution

Lane 1 : HeLa lysates

Lane 2 : Jurkat lysates

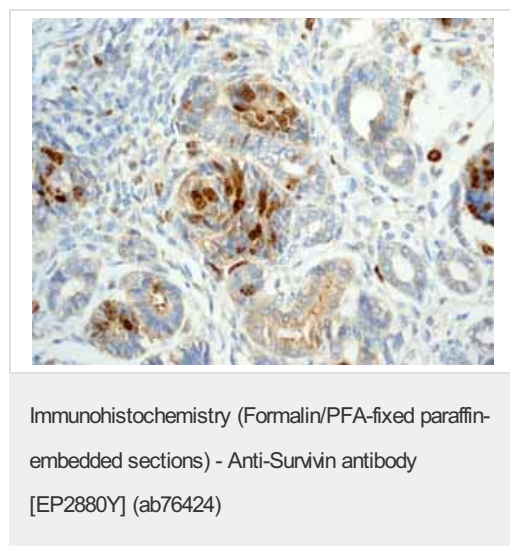
Lysates/proteins at 10 µg per lane.

Secondary

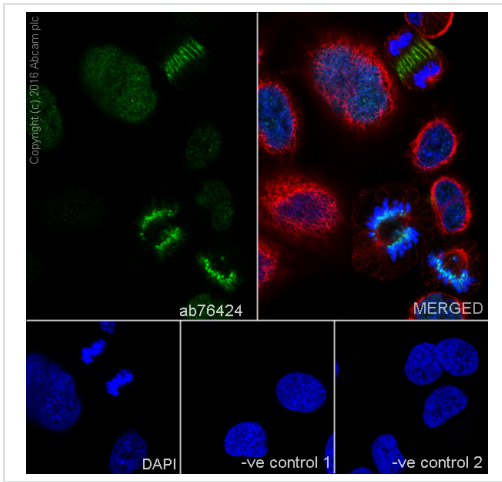
goat anti-rabbit HRP at 1/1000 dilution

Predicted band size : 16 kDa

Observed band size : 16 kDa



ab76424 showing positive staining in Fetal kidney tissue.

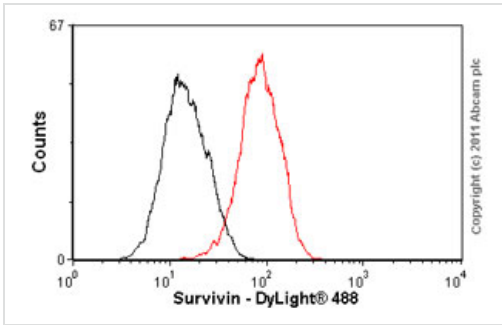


Immunocytochemistry/ Immunofluorescence - Anti-Survivin antibody [EP2880Y] (ab76424)

Immunofluorescent staining of MCF-7 cells labelling Bcl-2 with purified ab76424 at 1/1000. Cells were fixed with 4% paraformaldehyde and permeabilized with 0.1% Triton X-100. ab150077, an Alexa Fluor[®] 488-conjugated goat anti-rabbit IgG (1/1000) was used as the secondary antibody. The cells were co-stained with ab7291, a mouse anti-tubulin (1/1000) using ab150120, an Alexa Fluor[®] 594-conjugated goat anti-mouse IgG (1/1000) as the secondary antibody. Nuclei counterstained with DAPI (blue).

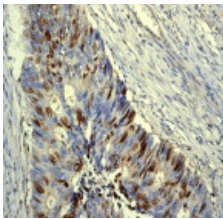
Control 1: primary antibody (1/100) and secondary antibody, ab150120, an Alexa Fluor[®] 594-conjugated goat anti-mouse IgG (1/500).

Control 2: ab7291 (1/1000) and secondary antibody, ab150077, an Alexa Fluor[®] 488-conjugated goat anti-rabbit IgG (1/500).



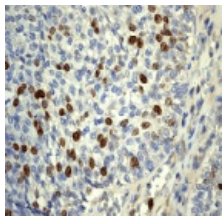
Flow Cytometry - Anti-Survivin antibody [EP2880Y] (ab76424)

Overlay histogram showing HeLa cells stained with ab76424 (red line). The cells were fixed with methanol (5 min) and then permeabilized with 0.1% PBS-Tween for 20 min. The cells were then incubated in 1x PBS / 10% normal goat serum / 0.3M glycine to block non-specific protein-protein interactions followed by the antibody (ab76424, 1/50 dilution) for 30 min at 22°C. The secondary antibody used was DyLight® 488 goat anti-rabbit IgG (H+L) (ab96899) at 1/500 dilution for 30 min at 22°C. Isotype control antibody (black line) was rabbit monoclonal IgG (1µg/1x10⁶ cells) used under the same conditions. Acquisition of >5,000 events was performed. This antibody gave a decreased signal in HeLa cells fixed with 4% paraformaldehyde/permeabilized with 0.1% PBS-Tween 20 used under the same conditions.



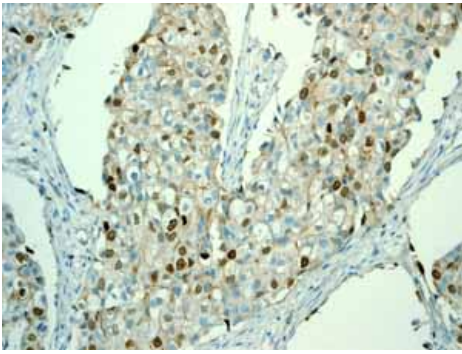
Immunohistochemistry (Formalin/PFA-fixed paraffin-embedded sections) - Anti-Survivin antibody [EP2880Y] (ab76424)

ab76424 at 1/250 dilution staining Survivin in human colonic adenocarcinoma by Immunohistochemistry, Paraffin-embedded tissue.



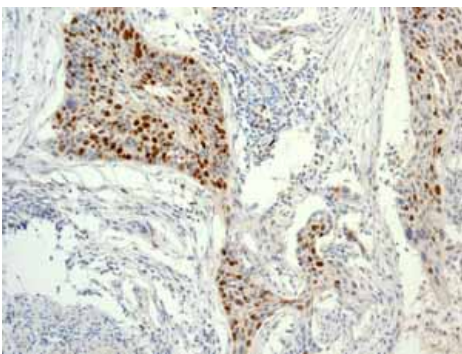
Immunohistochemistry (Formalin/PFA-fixed paraffin-embedded sections) - Anti-Survivin antibody [EP2880Y] (ab76424)

ab76424 at 1/250 dilution staining Survivin in human urinary bladder carcinoma by Immunohistochemistry, Paraffin-embedded tissue.



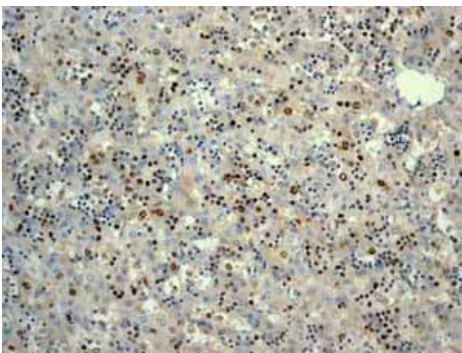
ab76424 showing positive staining in breast carcinoma tissue.

Immunohistochemistry (Formalin/PFA-fixed paraffin-embedded sections) - Anti-Survivin antibody [EP2880Y] (ab76424)



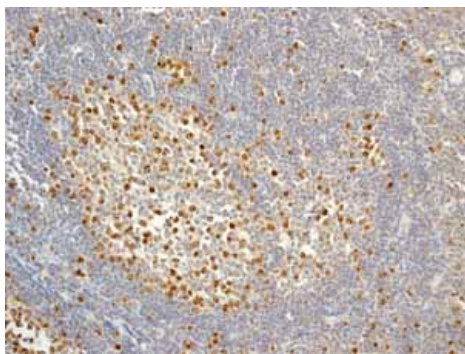
ab76424 showing positive staining in cervical carcinoma tissue.

Immunohistochemistry (Formalin/PFA-fixed paraffin-embedded sections) - Anti-Survivin antibody [EP2880Y] (ab76424)



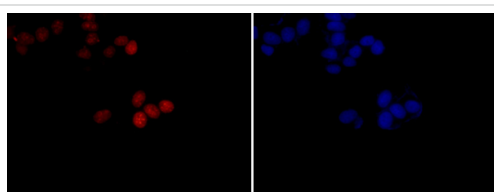
ab76424 showing positive staining in fetal liver tissue.

Immunohistochemistry (Formalin/PFA-fixed paraffin-embedded sections) - Anti-Survivin antibody [EP2880Y] (ab76424)



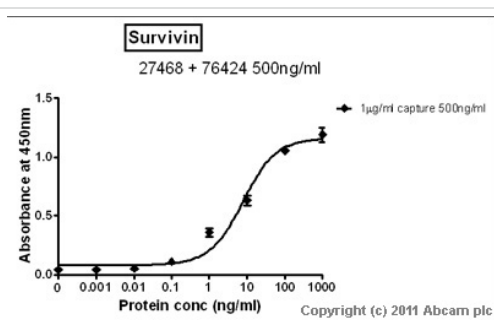
Immunohistochemistry (Formalin/PFA-fixed paraffin-embedded sections) - Anti-Survivin antibody [EP2880Y] (ab76424)

ab76424 showing positive staining in normal tonsil tissue.



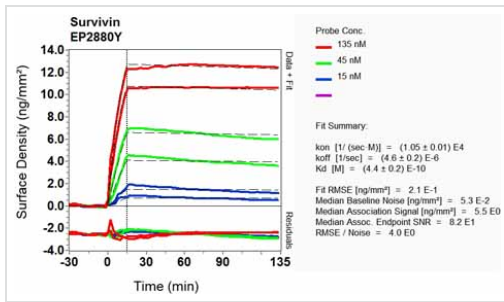
Immunocytochemistry/ Immunofluorescence - Anti-Survivin antibody [EP2880Y] (ab76424)

Immunocytochemistry/Immunofluorescence analysis of MCF-7 cells labelling Survivin with ab76424 at 1/100. Cells were fixed with 4% paraformaldehyde for 20 minutes at room temperature. Cells were incubated with the primary antibody overnight. An Alexa Fluor[®] 555-conjugated anti-rabbit IgG was used as the secondary antibody. Left - Survivin, Right - DAPI.



Sandwich ELISA - Anti-Survivin antibody [EP2880Y] (ab76424)

Standard curve for Survivin (Analyte: [ab87202](#)); dilution range 1pg/ml to 1µg/ml using Capture Antibody [ab27468](#) at 1µg/ml and Detector Antibody [abRabbit monoclonal \[EP2880Y\] to Survivin \(ab76424\)](#) at 0.5µg/ml. Concentration of [Rabbit monoclonal \[EP2880Y\] to Survivin \(ab76424\)](#) may vary from lot to lot; please use this curve as guideline.



Other - Anti-Survivin antibody [EP2880Y] (ab76424)

Equilibrium dissociation constant (K_D)

Learn more about K_D

[Click here to learn more about \$K_D\$](#)

Please note: All products are "FOR RESEARCH USE ONLY AND ARE NOT INTENDED FOR DIAGNOSTIC OR THERAPEUTIC USE"

Our Abpromise to you: Quality guaranteed and expert technical support

- Replacement or refund for products not performing as stated on the datasheet
- Valid for 12 months from date of delivery
- Response to your inquiry within 24 hours
- We provide support in Chinese, English, French, German, Japanese and Spanish
- Extensive multi-media technical resources to help you
- We investigate all quality concerns to ensure our products perform to the highest standards

If the product does not perform as described on this datasheet, we will offer a refund or replacement. For full details of the Abpromise, please visit <http://www.abcam.co.jp/abpromise> or contact our technical team.

Terms and conditions

- Guarantee only valid for products bought direct from Abcam or one of our authorized distributors