

Product datasheet

Anti-Superoxide Dismutase 3 antibody ab90258

画像数 1

製品の概要

製品名	Anti-Superoxide Dismutase 3 antibody
製品の詳細	Rabbit polyclonal to Superoxide Dismutase 3
由来種	Rabbit
アプリケーション	適用あり: WB
種交差性	交差種: Human
免疫原	Synthetic peptide conjugated to KLH derived from within residues 1 - 100 of Human Superoxide Dismutase 3. Immunogen の所有権に関して (Peptide available as ab99867 .)
ポジティブ・コントロール	This antibody gave a positive signal in the following human tissue lysates: Artery; Heart; Lung; Kidney.

製品の特性

製品の状態	Liquid
保存方法	Shipped at 4°C. Store at +4°C short term (1-2 weeks). Upon delivery aliquot. Store at -20°C or -80°C. Avoid freeze / thaw cycle.
バッファー	Preservative: 0.02% Sodium Azide Constituents: 1% BSA, PBS, pH 7.4
精製度	Immunogen affinity purified
ポリ/モノ	ポリクローナル
アイソタイプ	IgG

アプリケーション

Our [Abpromise guarantee](#) covers the use of **ab90258** in the following tested applications.

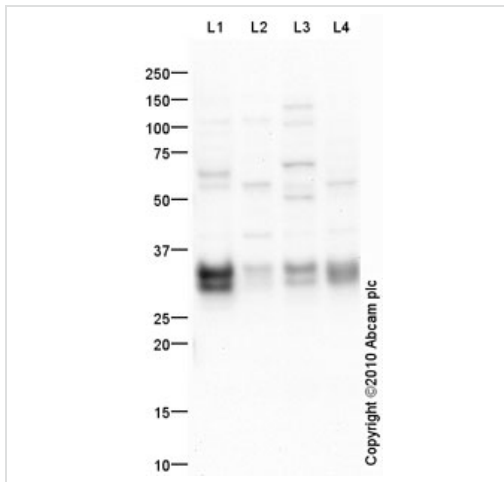
The application notes include recommended starting dilutions; optimal dilutions/concentrations should be determined by the end user.

アプリケーション	Abreviews	特記事項
WB		Use a concentration of 1 µg/ml. Detects a band of approximately 32 kDa (predicted molecular weight: 26 kDa).

ターゲット情報

機能	Protect the extracellular space from toxic effect of reactive oxygen intermediates by converting superoxide radicals into hydrogen peroxide and oxygen.
組織特異性	Expressed in blood vessels, heart, lung, kidney and placenta. Major SOD isoenzyme in extracellular fluids such as plasma, lymph and synovial fluid.
配列類似性	Belongs to the Cu-Zn superoxide dismutase family.
細胞内局在	Secreted > extracellular space. 99% of EC-SOD is anchored to heparan sulfate proteoglycans in the tissue interstitium, and 1% is located in the vasculature in equilibrium between the plasma and the endothelium.

画像



Western blot - Superoxide Dismutase 3 antibody (ab90258)

All lanes : Anti-Superoxide Dismutase 3 antibody (ab90258) at 1 µg/ml

Lane 1 : Human blood vessel: artery normal tissue lysate - membrane extract (ab28989)

Lane 2 : Human heart tissue lysate - total protein (ab29431)

Lane 3 : Lung (Human) Tissue Lysate

Lane 4 : Human kidney tissue lysate - total protein (ab30203)

Lysates/proteins at 10 µg per lane.

Secondary

All lanes : Goat Anti-Rabbit IgG H&L (HRP) preadsorbed (ab97080) at 1/5000 dilution

Developed using the ECL technique.

Performed under reducing conditions.

Predicted band size: 26 kDa

Observed band size: 32,35 kDa

Additional bands at: 110 kDa, 42 kDa, 50 kDa, 55 kDa, 60 kDa. We are unsure as to the identity of these extra bands.

Exposure time: 4 minutes

Superoxide dismutase contains a number of potential glycosylation sites (SwissProt), which may explain the migration pattern observed.

Please note: All products are "FOR RESEARCH USE ONLY AND ARE NOT INTENDED FOR DIAGNOSTIC OR THERAPEUTIC USE"

Our Abpromise to you: Quality guaranteed and expert technical support

- Replacement or refund for products not performing as stated on the datasheet
- Valid for 12 months from date of delivery
- Response to your inquiry within 24 hours
- We provide support in Chinese, English, French, German, Japanese and Spanish

- Extensive multi-media technical resources to help you
- We investigate all quality concerns to ensure our products perform to the highest standards

If the product does not perform as described on this datasheet, we will offer a refund or replacement. For full details of the Abpromise, please visit <http://www.abcam.co.jp/abpromise> or contact our technical team.

Terms and conditions

- Guarantee only valid for products bought direct from Abcam or one of our authorized distributors