

Product datasheet

Anti-Stathmin 1 (phospho S63) antibody [EPR1574] ab76583

リコンビナント RabMAb®

★★★★☆ 1 Abreviews 4 References 画像数 5

製品の概要

製品名	Anti-Stathmin 1 (phospho S63) antibody [EPR1574]
製品の詳細	Rabbit monoclonal [EPR1574] to Stathmin 1 (phospho S63)
由来種	Rabbit
特異性	ab76583 only detects Stathmin 1 phosphorylated on Serine 62. The antibody immunogen shares 86% homology with Stathmin-2, therefore it is possible that the antibody will cross-react with Stathmin-2 when phosphorylated at serine 97. This has not been assessed experimentally.
アプリケーション	適用あり: Dot blot, IHC-P, WB, IP 適用なし: Flow Cyt or ICC
種交差性	交差種: Human
免疫原	Synthetic peptide within Human Stathmin 1. The exact sequence is proprietary.
ポジティブ・コントロール	HeLa cell lysates treated with Calyculin A; human brain tissue.
特記事項	<p>This product is a recombinant rabbit monoclonal antibody.</p> <p>We are constantly working hard to ensure we provide our customers with best in class antibodies. As a result of this work we are pleased to now offer this antibody in purified format. We are in the process of updating our datasheets. The purified format is designated "PUR" on our product labels. If you have any questions regarding this update, please contact our Scientific Support team.</p> <p>Mouse, Rat: We have preliminary internal testing data to indicate this antibody may not react with these species. Please contact us for more information.</p> <p>Our RabMAb® technology is a patented hybridoma-based technology for making rabbit monoclonal antibodies. For details on our patents, please refer to RabMAb® patents</p>

製品の特性

製品の状態	Liquid
保存方法	Shipped at 4°C. Upon delivery aliquot and store at -20°C. Avoid repeated freeze / thaw cycles.
バッファー	PBS 49%, Sodium azide 0.01%, Glycerol 50%, BSA 0.05%
精製度	Tissue culture supernatant
ポリ/モノ	モノクローナル

クローン名 EPR1574
アイソタイプ IgG

アプリケーション

Our [Abpromise guarantee](#) covers the use of **ab76583** in the following tested applications.

The application notes include recommended starting dilutions; optimal dilutions/concentrations should be determined by the end user.

アプリケーション	Abreviews	特記事項
Dot blot		1/1000.
IHC-P		1/250 - 1/500. Perform heat mediated antigen retrieval before commencing with IHC staining protocol.
WB	★★★★☆	1/2500 - 1/10000. Predicted molecular weight: 17 kDa.
IP		1/20.

追加情報 Is unsuitable for Flow Cyt or ICC.

ターゲット情報

機能 Involved in the regulation of the microtubule (MT) filament system by destabilizing microtubules. Prevents assembly and promotes disassembly of microtubules. Phosphorylation at Ser-16 may be required for axon formation during neurogenesis. Involved in the control of the learned and innate fear.

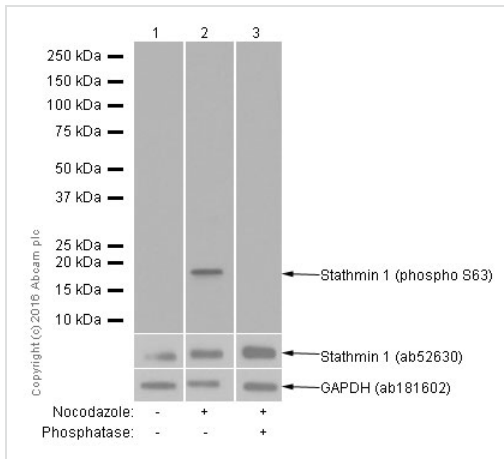
組織特異性 Ubiquitous. Expression is strongest in fetal and adult brain, spinal cord, and cerebellum, followed by thymus, bone marrow, testis, and fetal liver. Expression is intermediate in colon, ovary, placenta, uterus, and trachea, and is readily detected at substantially lower levels in all other tissues examined. Lowest expression is found in adult liver. Present in much greater abundance in cells from patients with acute leukemia of different subtypes than in normal peripheral blood lymphocytes, non-leukemic proliferating lymphoid cells, bone marrow cells, or cells from patients with chronic lymphoid or myeloid leukemia.

配列類似性 Belongs to the stathmin family.
Contains 1 SLD (stathmin-like) domain.

翻訳後修飾 Many different phosphorylated forms are observed depending on specific combinations among the sites which can be phosphorylated. MAPK is responsible for the phosphorylation of stathmin in response to NGF. Phosphorylation at Ser-16 seems to be required for neuron polarization (By similarity). Phosphorylation at Ser-63 reduces tubulin binding 10-fold and suppresses the MT polymerization inhibition activity.

細胞内局在 Cytoplasm > cytoskeleton.

画像



Western blot - Anti-Stathmin 1 (phospho S63) antibody [EPR1574] (ab76583)

All lanes : Anti-Stathmin 1 (phospho S63) antibody [EPR1574] (ab76583) at 1/1000 dilution

Lane 1 : Untreated HeLa (Human epithelial cell line from cervix adenocarcinoma) whole cell lysates

Lane 2 : HeLa (Human epithelial cell line from cervix adenocarcinoma) treated with nocodazole at 100 ng/mL for 18 hours. Whole cell lysates

Lane 3 : HeLa (Human epithelial cell line from cervix adenocarcinoma) treated with nocodazole at 100 ng/mL for 18 hours. Whole cell lysates. Then the membrane was incubated with phosphatase.

Lysates/proteins at 15 µg per lane.

Secondary

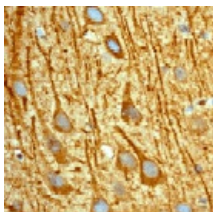
All lanes : Goat Anti-Rabbit IgG H&L (HRP) (ab97051) at 1/100000 dilution

Predicted band size: 17 kDa

Observed band size: 17 kDa

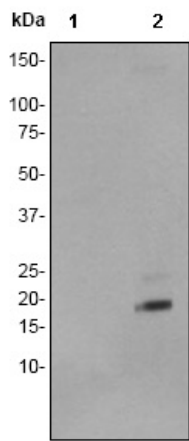
Exposure time: 30 seconds

Blocking/Diluting buffer and concentration 2% BSA/TBST



Immunohistochemistry (Formalin/PFA-fixed paraffin-embedded sections) - Stathmin 1 (phospho S62) antibody [EPR1574] (ab76583)

ab76583, at a 1/250 dilution, staining Stathmin 1 in paraffin embedded human brain tissue by Immunohistochemistry.



Western blot - Stathmin 1 (phospho S62) antibody [EPR1574] (ab76583)

All lanes : Anti-Stathmin 1 (phospho S63) antibody [EPR1574] (ab76583) at 1/10000 dilution

Lane 1 : HeLa cell lysate, untreated

Lane 2 : HeLa cell lysate treated with Calyculin A

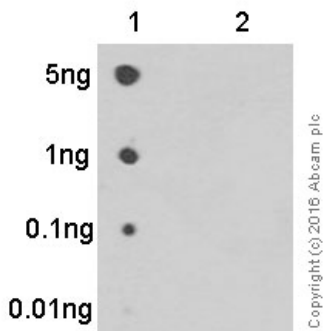
Lysates/proteins at 10 µg per lane.

Secondary

All lanes : HRP labelled goat anti rabbit at 1/2000 dilution

Predicted band size: 17 kDa

Observed band size: 17 kDa

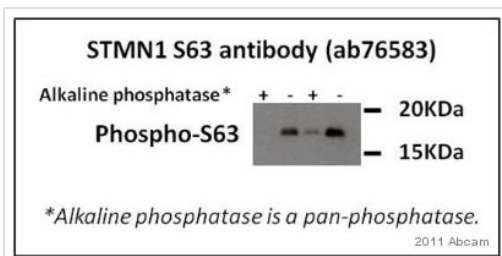


Dot Blot - Anti-Stathmin 1 (phospho S63) antibody [EPR1574] (ab76583)

Dot blot analysis of Stathmin 1 (phospho S63) phospho peptide (Lane 1) and Stathmin 1 non-phospho peptide (Lane 2) labeling Stathmin 1 (phospho S63) with ab76583 at a dilution of 1/1000. [ab97051](#) (Peroxidase conjugated goat anti-rabbit IgG) (H+L) at 1/100 000 was used as the secondary antibody.

Blocking and diluting buffer: 5% NFDN/TBST.

Exposure time: 3 minutes.



Western blot - Anti-Stathmin 1 (phospho S63) antibody [EPR1574] (ab76583)
Image courtesy of Qifeng Lin by Abreview.

Alkaline phosphatase treatment removes S63 phosphorylation. Samples treated with phosphatase were run alongside the normal lysate, and the phosph-S63 signal is not detected after phosphatase treatment, thus suggesting the signal is very specific to the phosphorylated S63.

Whole cell lysate prepared from a human colon cancer cell line was loaded at 20µg. ab76583 used at a 1/1000 dilution.

Secondary used was an HRP conjugated goat anti-rabbit polyclonal used at a 1/10000 dilution.

Please note: All products are "FOR RESEARCH USE ONLY AND ARE NOT INTENDED FOR DIAGNOSTIC OR THERAPEUTIC USE"

Our Abpromise to you: Quality guaranteed and expert technical support

- Replacement or refund for products not performing as stated on the datasheet
- Valid for 12 months from date of delivery
- Response to your inquiry within 24 hours
- We provide support in Chinese, English, French, German, Japanese and Spanish
- Extensive multi-media technical resources to help you
- We investigate all quality concerns to ensure our products perform to the highest standards

If the product does not perform as described on this datasheet, we will offer a refund or replacement. For full details of the Abpromise, please visit <http://www.abcam.co.jp/abpromise> or contact our technical team.

Terms and conditions

- Guarantee only valid for products bought direct from Abcam or one of our authorized distributors