


Product datasheet

Anti-Smoothened antibody ab113438

1 References [画像数 3](#)

製品の概要

製品名	Anti-Smoothened antibody
製品の詳細	Rabbit polyclonal to Smoothened
由来種	Rabbit
アプリケーション	適用あり: WB, ELISA, IHC-P
種交差性	交差種: Human 交差が予測される動物種: Mouse, Rat 
免疫原	Synthetic peptide against N terminal of Human Smoothened conjugated to KLH.
ポジティブ・コントロール	Human Liver & lung tissue, HuvEc cell lysate

製品の特性

製品の状態	Liquid
保存方法	Shipped at 4°C. Upon delivery aliquot and store at -20°C. Avoid repeated freeze / thaw cycles.
バッファー	pH: 7.40 Preservative: 0.02% Sodium azide Constituents: 49% PBS, 0.88% Sodium chloride, 50% Glycerol Note: PBS (without Mg <sup>2+</sup> , Ca <sup>2+</sup> )
精製度	Immunogen affinity purified
ポリ/モノ	ポリクローナル
アイソタイプ	IgG

アプリケーション

Our [Abpromise guarantee](#) covers the use of **ab113438** in the following tested applications.

The application notes include recommended starting dilutions; optimal dilutions/concentrations should be determined by the end user.

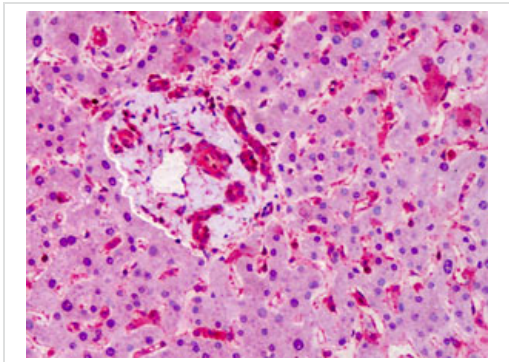
アプリケーション	Abreviews	特記事項
WB		1/500 - 1/1000. Predicted molecular weight: 86 kDa.
ELISA		1/10000.

アプリケーション	Abreviews	特記事項
IHC-P		Use a concentration of 10 µg/ml.

## ターゲット情報

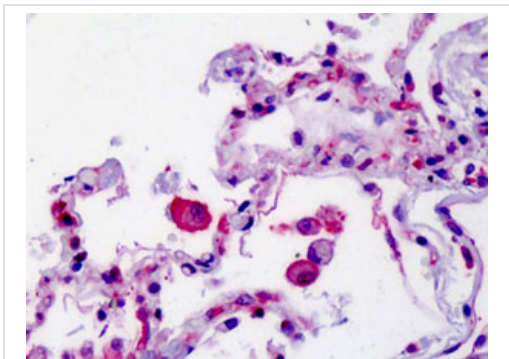
<b>機能</b>	G protein-coupled receptor that probably associates with the patched protein (PTCH) to transduce the hedgehog's proteins signal. Binding of sonic hedgehog (SHH) to its receptor patched is thought to prevent normal inhibition by patched of smoothened (SMO). Required for the accumulation of KIF7 and GLI3 in the cilia.
<b>配列類似性</b>	Belongs to the G-protein coupled receptor Fz/Smo family. Contains 1 FZ (frizzled) domain.
<b>細胞内局在</b>	Membrane.

## 画像



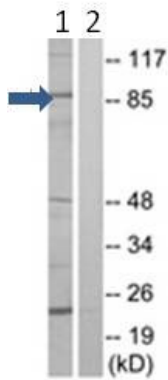
ab113438 at 10 µg/ml staining Smoothed in Human liver by Immunohistochemistry  
Formalin-fixed, Paraffin-embedded tissue.

Immunohistochemistry (Formalin/PFA-fixed paraffin-embedded sections) - Anti-Smoothed antibody (ab113438)



ab113438 at 10 µg/ml staining Smoothed in Human lung by Immunohistochemistry  
Formalin-fixed, Paraffin-embedded tissue.

Immunohistochemistry (Formalin/PFA-fixed paraffin-embedded sections) - Anti-Smoothed antibody (ab113438)



Western blot - Anti-Smoothened antibody  
(ab113438)

**All lanes :** Anti-Smoothened antibody  
(ab113438) at 1/500 dilution

**Lane 1 :** Extracts from HuvEc cells

**Lane 2 :** Extracts from HuvEc cells with  
Synthesized peptide

**Predicted band size:** 86 kDa

**Please note:** All products are "FOR RESEARCH USE ONLY AND ARE NOT INTENDED FOR DIAGNOSTIC OR THERAPEUTIC USE"

### Our Abpromise to you: Quality guaranteed and expert technical support

- Replacement or refund for products not performing as stated on the datasheet
- Valid for 12 months from date of delivery
- Response to your inquiry within 24 hours
- We provide support in Chinese, English, French, German, Japanese and Spanish
- Extensive multi-media technical resources to help you
- We investigate all quality concerns to ensure our products perform to the highest standards

If the product does not perform as described on this datasheet, we will offer a refund or replacement. For full details of the Abpromise, please visit <http://www.abcam.co.jp/abpromise> or contact our technical team.

### Terms and conditions

- Guarantee only valid for products bought direct from Abcam or one of our authorized distributors