


## Product datasheet

### Anti-Skp1 antibody, prediluted ab41866

#### 画像数 2

#### 製品の概要

|              |   |
|--------------|---|
| 製品名          | Anti-Skp1 antibody, prediluted  |
| 製品の詳細        | Rabbit polyclonal to Skp1, prediluted   |
| 由来種          | Rabbit  |
| アプリケーション     | 適用あり: IHC-P, WB   |
| 種交差性         | 交差種: Human<br>交差が予測される動物種: Mouse, Rat  |
| 免疫原          | Synthetic peptide corresponding to C-terminal of human Skp1.  |
| ポジティブ・コントロール | Breast carcinoma.   |

#### 製品の特性

|        |  |
|--------|--|
| 製品の状態  | Prediluted   |
| 保存方法   | Shipped at 4°C. Store at +4°C.   |
| バッファー  | Preservative: 0.1% Sodium Azide<br>Constituents: 1% BSA, 50mM Tris, pH 7.6 |
| 精製度    | Immunogen affinity purified  |
| ポリ/モノ  | ポリクローナル  |
| アイソタイプ | IgG  |

#### アプリケーション

Our [Abpromise guarantee](#) covers the use of **ab41866** in the following tested applications.

The application notes include recommended starting dilutions; optimal dilutions/concentrations should be determined by the end user.

| アプリケーション | Abreviews | 特記事項   |
|----------|-----------|--|
| IHC-P    |           | Use at an assay dependent concentration. Staining of formalin-fixed tissues requires boiling tissue sections in 10mM citrate buffer, pH 6.0 for 10 min followed by cooling at RT for 20 min. Use neat. |

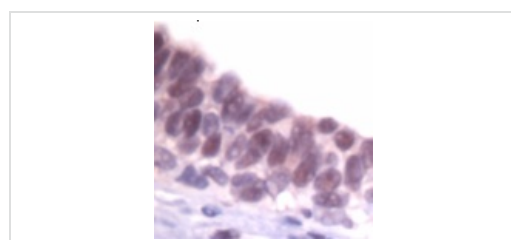
| アプリケーション | Abreviews | 特記事項 |
|----------|-----------|------|
|----------|-----------|------|

WB Use at an assay dependent concentration.

## ターゲット情報

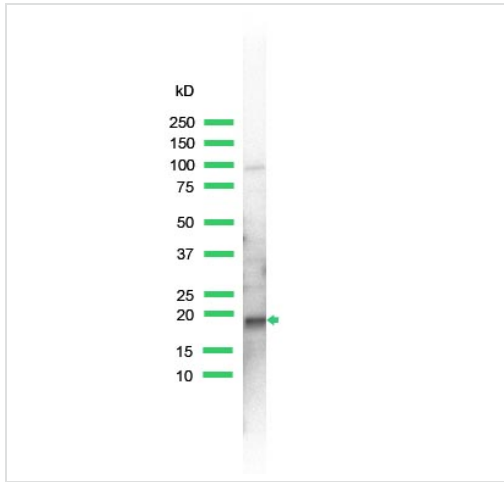
|       |  |
|-------|--|
| 機能    | Essential component of the SCF (SKP1-CUL1-F-box protein) ubiquitin ligase complex, which mediates the ubiquitination of proteins involved in cell cycle progression, signal transduction and transcription. In the SCF complex, serves as an adapter that links the F-box protein to CUL1. SCF(BTRC) mediates the ubiquitination of NFKBIA at 'Lys-21' and 'Lys-22'; the degradation frees the associated NFKB1-RELA dimer to translocate into the nucleus and to activate transcription. SCF(Cyclin F) directs ubiquitination of CP110. |
| パスウェイ | Protein modification; protein ubiquitination.  |
| 配列類似性 | Belongs to the SKP1 family.  |

## 画像



Ab41866 staining human Skp1 in human breast carcinoma by immunohistochemistry using formalin fixed paraffin embedded tissue.

Immunohistochemistry (Formalin/PFA-fixed paraffin-embedded sections) - Anti-Skp1 antibody, prediluted (ab41866)



Western blot - Anti-Skp1 antibody, prediluted (ab41866)

Anti-Skp1 antibody, prediluted (ab41866) at 1/25 dilution + lysate prepared from NIH3T3 cells

Image produced using the diluted version of this antibody, [ab41865](#).

**Please note:** All products are "FOR RESEARCH USE ONLY AND ARE NOT INTENDED FOR DIAGNOSTIC OR THERAPEUTIC USE"

### Our Abpromise to you: Quality guaranteed and expert technical support

- Replacement or refund for products not performing as stated on the datasheet
- Valid for 12 months from date of delivery
- Response to your inquiry within 24 hours
- We provide support in Chinese, English, French, German, Japanese and Spanish
- Extensive multi-media technical resources to help you
- We investigate all quality concerns to ensure our products perform to the highest standards

If the product does not perform as described on this datasheet, we will offer a refund or replacement. For full details of the Abpromise, please visit <http://www.abcam.co.jp/abpromise> or contact our technical team.

### Terms and conditions

- Guarantee only valid for products bought direct from Abcam or one of our authorized distributors