

Product datasheet

Anti-Shugoshin antibody ab21633

★ ★ ☆ ☆ ☆ 2 Abreviews 9 References 画像数 2

製品の概要

製品名	Anti-Shugoshin antibody
製品の詳細	Rabbit polyclonal to Shugoshin
由来種	Rabbit
特異性	There are 7 isoforms of Shugoshin with the following sizes: 64kDa, 58kDa, 34kDa, 32kD, 30kDa, 28kDa, and 24kDa. The immunogen used for this antibody is present in all isoforms. This antibody interacts with several proteins in the unsynchronized cell lines tested, with the most prominent bands in the range of 30-34kDa. The cell samples may need to be synchronized to detect the larger isoforms (see PLoS Biol. 2005 Mar;3(3):e86). These bands are competed away by addition of the immunizing peptide.
アプリケーション	適用あり: WB, ICC/IF, IHC-P
種交差性	交差種: Human
免疫原	Synthetic peptide conjugated to KLH derived from within residues 1 - 100 of Human Shugoshin. Immunogen の所有権に関して (Peptide available as ab23438 .)
ポジティブ・コントロール	This antibody gave a positive signal in HeLa Whole Cell lysate.

製品の特性

製品の状態	Liquid
保存方法	Shipped at 4°C. Store at +4°C short term (1-2 weeks). Upon delivery aliquot. Store at -20°C or -80°C. Avoid freeze / thaw cycle.
バッファー	Preservative: 0.02% Sodium Azide Constituents: 1% BSA, PBS, pH 7.4
精製度	Immunogen affinity purified
ポリ/モノ	ポリクローナル
アイソタイプ	IgG

アプリケーション

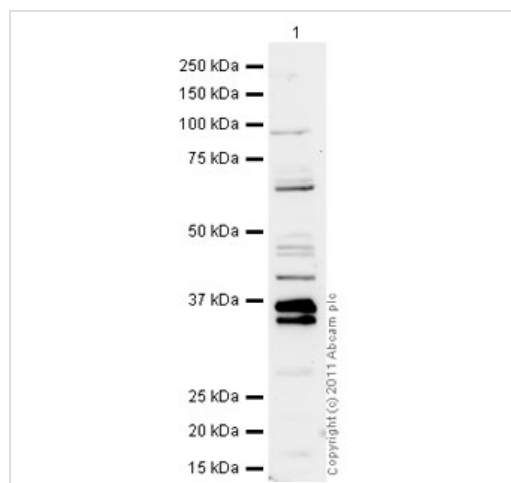
Our [Abpromise guarantee](#) covers the use of **ab21633** in the following tested applications.

The application notes include recommended starting dilutions; optimal dilutions/concentrations should be determined by the end user.

アプリケーション	Abreviews	特記事項
WB		Use a concentration of 1 µg/ml. Detects a band of approximately 64 kDa (predicted molecular weight: 64 kDa).
ICC/IF	★★★★☆	1/1000. PubMed: 18772885
IHC-P		1/350. Perform heat mediated antigen retrieval with citrate buffer pH 6 before commencing with IHC staining protocol.

ターゲット情報

機能	Plays a central role in chromosome cohesion during mitosis by preventing premature dissociation of cohesin complex from centromeres after prophase, when most of cohesin complex dissociates from chromosomes arms. May act by preventing phosphorylation of the STAG2 subunit of cohesin complex at the centromere, ensuring cohesin persistence at centromere until cohesin cleavage by ESPL1/separase at anaphase. Essential for proper chromosome segregation during mitosis and this function requires interaction with PPP2R1A. Its phosphorylated form is necessary for chromosome congression and for the proper attachment of spindle microtubule to the kinetochore. Necessary for kinetochore localization of PLK1 and CENPF. May play a role in the tension sensing mechanism of the spindle-assembly checkpoint by regulating PLK1 kinetochore affinity. Isoform 3 plays a role in maintaining centriole cohesion involved in controlling spindle pole integrity.
組織特異性	Widely expressed. Highly expressed in testis. Expressed in lung, small intestine, breast, liver and placenta. Strongly overexpressed in 90% of breast cancers tested.
配列類似性	Belongs to the shugoshin family.
発生段階	Appears in prophase cells and remains present until metaphase. Strongly decreases at the onset of anaphase and completely disappears at telophase. Not present in interphase cells (at protein level).
ドメイン	The KEN box and D-box 3 are required for its ubiquitination and degradation.
翻訳後修飾	Ubiquitinated and degraded during mitotic exit by APC/C-Cdh1. Phosphorylation by NEK2 is essential for chromosome congression in mitosis and for the proper attachment of spindle microtubule to the kinetochore. Phosphorylated by PLK1 and AUKRB.
細胞内局在	Nucleus. Chromosome > centromere. Chromosome > centromere > kinetochore. Cytoplasm > cytoskeleton > spindle pole. Cytoplasm > cytoskeleton > centrosome. Localizes to the inner centromere throughout prophase until metaphase and disappears at anaphase. During prometaphase, it localizes to a single focus, while at metaphase, it localizes to 2 spots corresponding to the 2 centromeres. Centromeric localization requires the presence of BUB1 and the interaction with PPP2R1A. Localizes to the inner kinetochore from prophase to early metaphase. Co-localizes with NEK2 and SS18L1 at the kinetochore. Phosphorylation by AUKRB and the presence of BUB1 are required for localization to the kinetochore. Isoform 1 primarily localizes to kinetochores during G2 phase and mitotic prophase, metaphase, and anaphase and does not appear to be associated with kinetochores during late mitosis. Isoform 3 is found at the centrosome in interphase and at spindle poles in mitosis and its spindle pole localization is PLK1 dependent. Isoform 3 does not localize to kinetochores during any stages of the cell cycle.



Western blot - Anti-Shugoshin antibody (ab21633)

Anti-Shugoshin antibody (ab21633) at 1 µg/ml
 + HeLa (Human epithelial carcinoma cell line)
 Whole Cell Lysate at 10 µg

Secondary

Goat polyclonal to Rabbit IgG - H&L - Pre-Adsorbed (HRP) at 1/3000 dilution

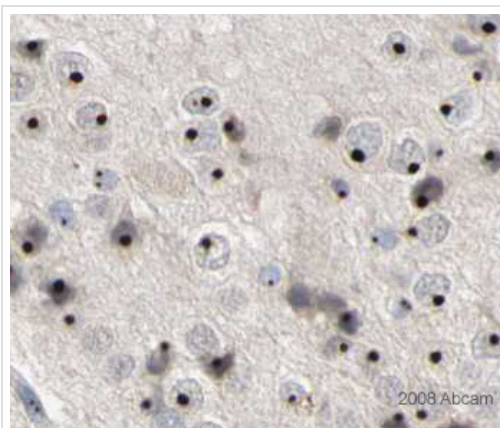
Performed under reducing conditions.

Predicted band size: 64 kDa

Observed band size: 64 kDa

Additional bands at: 34 kDa, 37 kDa, 40 kDa. We are unsure as to the identity of these extra bands.

Exposure time: 20 minutes



Immunohistochemistry (Formalin/PFA-fixed paraffin-embedded sections) - Anti-Shugoshin antibody (ab21633)

Image courtesy of [Human Protein Atlas](http://www.proteinatlas.org)

ab21633 staining Shugoshin in Human hippocampus. Paraffin embedded human hippocampus tissue was incubated with ab21633 (1/350 dilution) for 30 mins at room temperature. Antigen retrieval was performed by heat induction in citrate buffer pH 6.

ab21633 was tested in a tissue microarray (TMA) containing a wide range of normal and cancer tissues as well as a cell microarray consisting of a range of commonly used, well characterised human cell lines. Further results for this antibody can be found at

www.proteinatlas.org

Our Abpromise to you: Quality guaranteed and expert technical support

- Replacement or refund for products not performing as stated on the datasheet
- Valid for 12 months from date of delivery
- Response to your inquiry within 24 hours

- We provide support in Chinese, English, French, German, Japanese and Spanish
- Extensive multi-media technical resources to help you
- We investigate all quality concerns to ensure our products perform to the highest standards

If the product does not perform as described on this datasheet, we will offer a refund or replacement. For full details of the Abpromise, please visit <http://www.abcam.co.jp/abpromise> or contact our technical team.

Terms and conditions

- Guarantee only valid for products bought direct from Abcam or one of our authorized distributors