

## Product datasheet

# Anti-Shoc2 / Sur8 antibody ab106430

### 画像数 2

#### 製品の概要

製品名	Anti-Shoc2 / Sur8 antibody
製品の詳細	Rabbit polyclonal to Shoc2 / Sur8
由来種	Rabbit
アプリケーション	適用あり: WB
種交差性	交差種: Mouse, Rat, Human
免疫原	A 21 amino acid peptide near the N terminus of Human Shoc2/ Sur8 (NP_031399).
ポジティブ・コントロール	Jurkat cell lysate; Human spleen tissue

#### 製品の特性

製品の状態	Liquid
保存方法	Shipped at 4°C. Upon delivery aliquot and store at -20°C. Avoid freeze / thaw cycles.
バッファー	Preservative: 0.02% Sodium Azide Constituents: PBS
精製度	Immunogen affinity purified
ポリ/モノ	ポリクローナル
アイソタイプ	IgG

#### アプリケーション

Our [Abpromise guarantee](#) covers the use of **ab106430** in the following tested applications.

The application notes include recommended starting dilutions; optimal dilutions/concentrations should be determined by the end user.

アプリケーション	Abreviews	特記事項
WB		Use a concentration of 1 - 2 µg/ml. Predicted molecular weight: 65 kDa.

#### ターゲット情報

機能 Regulatory subunit of protein phosphatase 1 (PP1c) that acts as a M-Ras/MRAS effector and

participates in MAPK pathway activation. Upon M-Ras/MRAS activation, targets PP1c to specifically dephosphorylate the 'Ser-259' inhibitory site of RAF1 kinase and stimulate RAF1 activity at specialized signaling complexes.

#### 関連疾患

Defects in SHOC2 are the cause of Noonan syndrome-like with loose anagen hair (NSLAH) [MIM:607721]. NSLAH children display macrocephaly, high forehead, hypertelorism, palpebral ptosis, low-set and posteriorly rotated ears, short and webbed neck and pectus anomalies. Affected subjects also have easily pluckable, sparse, thin and slow-growing hair.

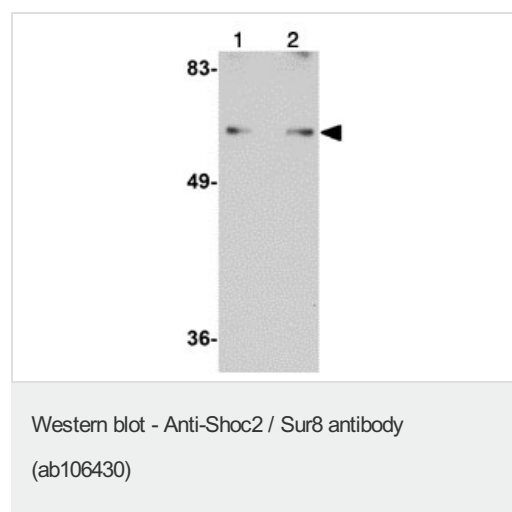
#### 配列類似性

Belongs to the SHOC2 family.  
Contains 20 LRR (leucine-rich) repeats.

#### 細胞内局在

Cytoplasm. Nucleus. Translocates from cytoplasm to nucleus upon growth factor stimulation.

#### 画像



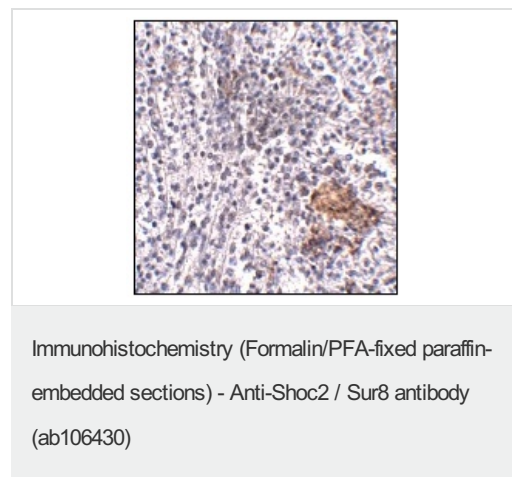
**Lane 1 :** Anti-Shoc2 / Sur8 antibody (ab106430) at 1 µg/ml

**Lane 2 :** Anti-Shoc2 / Sur8 antibody (ab106430) at 2 µg/ml

**All lanes :** Jurkat cell lysate

Lysates/proteins at 15 µg per lane.

**Predicted band size:** 65 kDa



ab106430, at 5 µg/ml, staining Shoc2 / Sur8 in paraffin embedded Human spleen tissue by Immunohistochemistry.

**Please note:** All products are "FOR RESEARCH USE ONLY AND ARE NOT INTENDED FOR DIAGNOSTIC OR THERAPEUTIC USE"

#### Our Abpromise to you: Quality guaranteed and expert technical support

- Replacement or refund for products not performing as stated on the datasheet
- Valid for 12 months from date of delivery

- Response to your inquiry within 24 hours
- We provide support in Chinese, English, French, German, Japanese and Spanish
- Extensive multi-media technical resources to help you
- We investigate all quality concerns to ensure our products perform to the highest standards

If the product does not perform as described on this datasheet, we will offer a refund or replacement. For full details of the Abpromise, please visit <http://www.abcam.co.jp/abpromise> or contact our technical team.

### **Terms and conditions**

---

- Guarantee only valid for products bought direct from Abcam or one of our authorized distributors