

## Product datasheet

# Anti-Separase antibody ab3762

★★★★★ 3 Abreviews 6 References 画像数 3

### 製品の概要

製品名	Anti-Separase antibody
製品の詳細	Rabbit polyclonal to Separase
由来種	Rabbit
アプリケーション	適用あり: WB, ICC/IF 適用なし: IHC-P
種交差性	交差種: Mouse, Human
免疫原	Synthetic peptide derived from residues 1200 - 1300 of Human Separase. Immunogenの所有権に関して
ポジティブ・コントロール	SVEC4-10 cells.

### 製品の特性

製品の状態	Liquid
保存方法	Shipped at 4°C. Store at +4°C short term (1-2 weeks). Upon delivery aliquot. Store at -20°C or -80°C. Avoid freeze / thaw cycle.
バッファー	Preservative: 0.02% Sodium Azide Constituents: 1% BSA, PBS, pH 7.4
精製度	Immunogen affinity purified
ポリモノ	ポリクローナル
アイソタイプ	IgG

### アプリケーション

Our [Abpromise guarantee](#) covers the use of **ab3762** in the following tested applications.

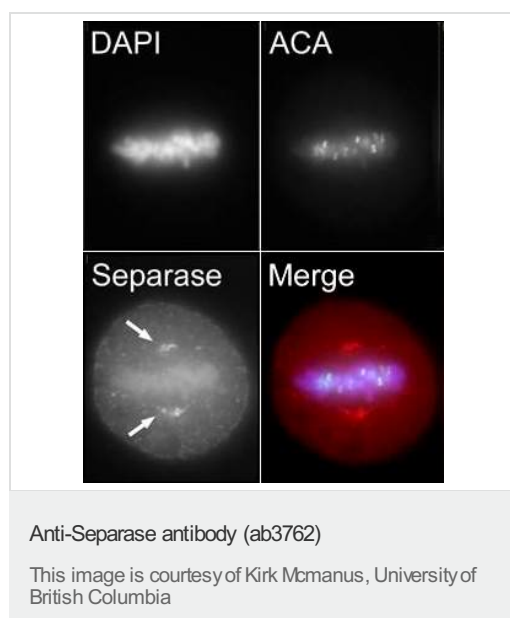
The application notes include recommended starting dilutions; optimal dilutions/concentrations should be determined by the end user.

アプリケーション	Abreviews	特記事項
WB	★★★★☆	Use at an assay dependent dilution.
ICC/IF	★★★★★	Use at an assay dependent dilution.

## ターゲット情報

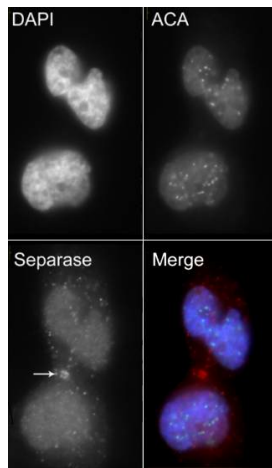
機能	Caspase-like protease, which plays a central role in the chromosome segregation by cleaving the SCC1/RAD21 subunit of the cohesin complex at the onset of anaphase. During most of the cell cycle, it is inactivated by different mechanisms.
配列類似性	Belongs to the peptidase C50 family.
翻訳後修飾	Autocleaves. This function, which is not essential for its protease activity, is unknown. Phosphorylated by CDK1. There are 8 Ser/Thr phosphorylation sites. Among them, Ser-1126 phosphorylation is the major site, which conducts to the enzyme inactivation.
細胞内局在	Cytoplasm. Nucleus.

## 画像



Metaphase HeLa cells were labelled with anti-ACA (anti-centromeric antigen) and anti-Separase (ab3762). ab3762 was used at a working concentration of 1 µg/ml. The arrows indicate the position of the centrosomes and demonstrate a spatial relationship between Separase and the centrosomes during metaphase. In the final panel DAPI is pseudo-coloured blue, while ACA and Separase are green and red respectively. 100x magnification.

Metaphase HeLa cells were labelled with anti-ACA (anti-centromeric antigen) and anti-Separase (ab3762). ab3762 was used at a working concentration of 1 µg/ml. The arrows indicate the position of the centrosomes and demonstrate a spatial relationship between Separase and the centrosomes during metaphase. In the final panel DAPI is pseudo-coloured blue, while ACA and Separase are green and red respectively. 100x magnification.

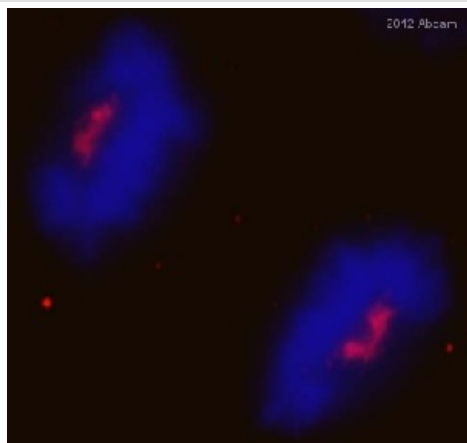


Anti-Separase antibody (ab3762)

This image is courtesy of Kirk Mcmanus, University of British Columbia

HeLa cells were labelled with anti-ACA and anti-Separase (ab3762). ab3762 was used at a working concentration of 1 µg/ml. The arrow indicates the localization of Separase at the mid-body. In the final panel DAPI is pseudo-coloured blue, while ACA and Separase are green and red respectively. 100x magnification.

HeLa cells were labelled with anti-ACA and anti-Separase (ab3762). ab3762 was used at a working concentration of 1 µg/ml. The arrow indicates the localization of Separase at the mid-body. In the final panel DAPI is pseudo-coloured blue, while ACA and Separase are green and red respectively. 100x magnification.



Immunocytochemistry/ Immunofluorescence - Anti-Separase antibody (ab3762)

This image is courtesy of an anonymous Abreview

ab3762 staining Separase in the Human HeLa cell line by ICC/IF (Immunocytochemistry/immunofluorescence). Cells were fixed with PFA, permeabilized with Triton X-100 0.5% in PBS and blocked with 10% Serum for 90 minutes at 25°C. Samples were incubated with primary antibody (1/200) for 6 hour at 25°C. An undiluted Cy3<sup>®</sup>conjugated anti-rabbit IgG polyclonal was used as the secondary antibody.

**Please note:** All products are "FOR RESEARCH USE ONLY AND ARE NOT INTENDED FOR DIAGNOSTIC OR THERAPEUTIC USE"

### Our Abpromise to you: Quality guaranteed and expert technical support

- Replacement or refund for products not performing as stated on the datasheet
- Valid for 12 months from date of delivery

- Response to your inquiry within 24 hours
- We provide support in Chinese, English, French, German, Japanese and Spanish
- Extensive multi-media technical resources to help you
- We investigate all quality concerns to ensure our products perform to the highest standards

If the product does not perform as described on this datasheet, we will offer a refund or replacement. For full details of the Abpromise, please visit <http://www.abcam.co.jp/abpromise> or contact our technical team.

### **Terms and conditions**

---

- Guarantee only valid for products bought direct from Abcam or one of our authorized distributors