


Product datasheet

Anti-SYPL1 antibody ab113638

画像数 2

製品の概要

| | |
|--------------|---|
| 製品名 | Anti-SYPL1 antibody |
| 製品の詳細 | Rabbit polyclonal to SYPL1 |
| アプリケーション | 適用あり: WB, ELISA, IHC-P |
| 種交差性 | 交差種: Human 交差が予測される動物種: Mouse, Rat  |
| 免疫原 | Synthetic peptide from the N terminal region of Human SYPL1, conjugated to KLH. |
| ポジティブ・コントロール | Human liver tissue; Human brain lysate |

製品の特性

| | |
|--------|---|
| 製品の状態 | Liquid |
| 保存方法 | Shipped at 4°C. Store at +4°C short term (1-2 weeks). Store at -20°C or -80°C. Avoid freeze / thaw cycle. |
| バッファー | Preservative: 0.02% Sodium azide Constituent: 99% PBS |
| 精製度 | Immunogen affinity purified |
| ポリ/モノ | ポリクローナル |
| アイソタイプ | IgG |

アプリケーション

Our [Abpromise guarantee](#) covers the use of **ab113638** in the following tested applications.

The application notes include recommended starting dilutions; optimal dilutions/concentrations should be determined by the end user.

| アプリケーション | Abreviews | 特記事項 |
|----------|-----------|---|
| WB | | Use a concentration of 1 - 2 µg/ml. Predicted molecular weight: 29 kDa. |
| ELISA | | Use at an assay dependent concentration. |
| IHC-P | | Use a concentration of 5 µg/ml. |

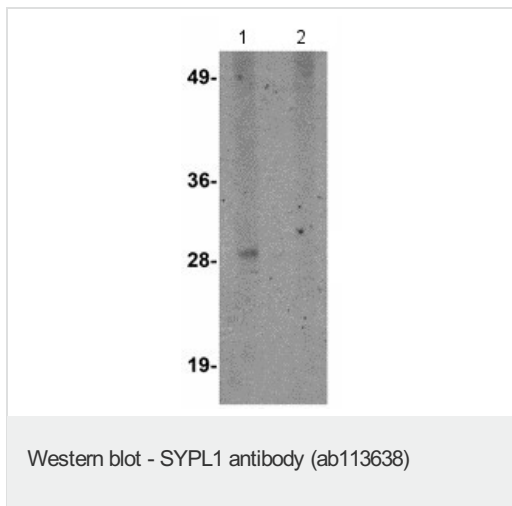
配列類似性

Belongs to the synaptophysin/synaptobrevin family.
Contains 1 MARVEL domain.

細胞内局在

Cytoplasmic vesicle membrane. Melanosome. Cytoplasmic transport vesicles (By similarity).
Identified by mass spectrometry in melanosome fractions from stage I to stage IV.

Anti-SYPL1 antibody 画像

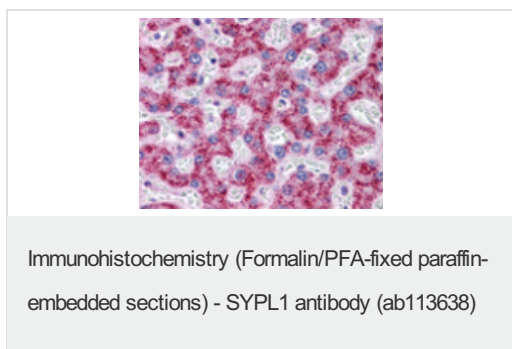


All lanes : Anti-SYPL1 antibody (ab113638)
at 1 µg/ml

Lane 1 : Human brain lysate

Lane 2 : Human brain lysate with with
blocking peptide

Predicted band size : 29 kDa



ab113638, at 5 µg/ml, staining SYPL1 in formalin fixed, paraffin embedded Human liver tissue by Immunohistochemistry.

Please note: All products are "FOR RESEARCH USE ONLY AND ARE NOT INTENDED FOR DIAGNOSTIC OR THERAPEUTIC USE"

Our Abpromise to you: Quality guaranteed and expert technical support

- Replacement or refund for products not performing as stated on the datasheet
- Valid for 12 months from date of delivery
- Response to your inquiry within 24 hours
- We provide support in Chinese, English, French, German, Japanese and Spanish
- Extensive multi-media technical resources to help you
- We investigate all quality concerns to ensure our products perform to the highest standards

If the product does not perform as described on this datasheet, we will offer a refund or replacement. For full details of the Abpromise, please visit <http://www.abcam.co.jp/abpromise> or contact our technical team.

Terms and conditions

- Guarantee only valid for products bought direct from Abcam or one of our authorized distributors

