


Product datasheet

Anti-SULT2B1 antibody ab82865

★★★★★ 2 Abreviews 2 References 画像数 2

製品の概要

製品名	Anti-SULT2B1 antibody
製品の詳細	Rabbit polyclonal to SULT2B1
アプリケーション	適用あり: ELISA, WB, ICC/IF
種交差性	交差種: Mouse, Human 交差が予測される動物種: Rat, Rabbit, Horse, Guinea pig, Cow, Cat, Dog, Pig 
免疫原	Synthetic peptide corresponding to a region within internal sequence amino acids 143-192 ( YSKIAGQLKDPGTPDQFLRDFLKGEVQFGSWFDHIKGWLRMKGKDNFLFI ) of Human SULT2B1 (NP_004596). <a href="#">Run BLAST with</a> <a href="#">Run BLAST with</a>
ポジティブ・コントロール	Transfected 293T cell lysate.

製品の特性

製品の状態	Liquid
保存方法	Shipped at 4°C. Store at +4°C short term (1-2 weeks). Upon delivery aliquot. Store at -20°C long term.
バッファー	Preservative: None Constituents: 2% Sucrose, PBS
精製度	Immunogen affinity purified
ポリ/モノ	ポリクローナル
アイソタイプ	IgG

アプリケーション

Our [Abpromise guarantee](#) covers the use of **ab82865** in the following tested applications.

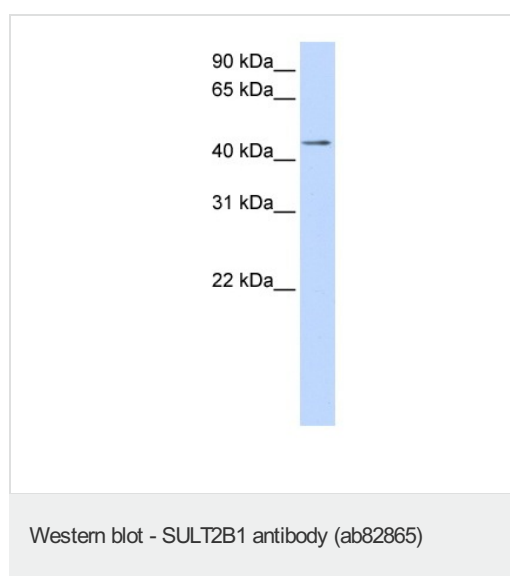
The application notes include recommended starting dilutions; optimal dilutions/concentrations should be determined by the end user.

アプリ ケーション	Abreviews	特記事項
ELISA		Use at an assay dependent concentration. Titre using peptide based assay is 1/62500.
WB	★★★★★	Use a concentration of 1 µg/ml. Detects a band of approximately 41 kDa (predicted molecular weight: 41 kDa). Good results were obtained when blocked with 5% non-fat dry milk in 0.05% PBS-T.
ICC/IF	★★★★☆	Use at an assay dependent concentration.

## ターゲット情報

<b>機能</b>	Catalyzes the sulfate conjugation of many hormones, neurotransmitters, drugs and xenobiotic compounds. Sulfonation increases the water solubility of most compounds, and therefore their renal excretion, but it can also result in bioactivation to form active metabolites. Sulfates hydroxysteroids like DHEA. Isoform 1 preferentially sulfonates cholesterol, and isoform 2 avidly sulfonates pregnenolone but not cholesterol.
<b>組織特異性</b>	Expressed highly in placenta, prostate and trachea and lower expression in the small intestine and lung.
<b>配列類似性</b>	Belongs to the sulfotransferase 1 family.
<b>細胞内局在</b>	Cytoplasm.

## 画像



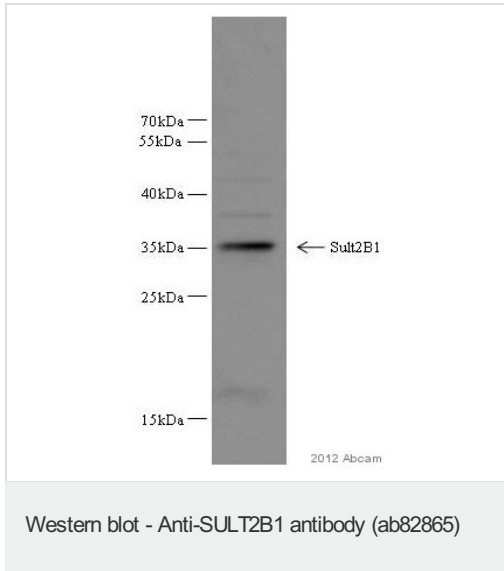
Anti-SULT2B1 antibody (ab82865) at 1 µg/ml  
(5% skim milk / PBS buffer) + Transfected  
293T cell lysate at 10 µg

### Secondary

HRP conjugated anti-Rabbit IgG at 1/50000  
dilution

**Predicted band size** : 41 kDa

**Observed band size** : 41 kDa



Anti-SULT2B1 antibody (ab82865) at 1/1000 dilution + whole cell lysate prepared from murine macrophages at 30 µg

**Secondary**

HRP conjugated goat anti-rabbit IgG polyclonal at 1/2000 dilution  
Developed using the ECL technique

**Predicted band size : 41 kDa**

**Observed band size : 36 kDa**

**Exposure time : 1 minute**

*Image courtesy of an anonymous Abreview.*

**Please note:** All products are "FOR RESEARCH USE ONLY AND ARE NOT INTENDED FOR DIAGNOSTIC OR THERAPEUTIC USE"

**Our Abpromise to you: Quality guaranteed and expert technical support**

- Replacement or refund for products not performing as stated on the datasheet
- Valid for 12 months from date of delivery
- Response to your inquiry within 24 hours
- We provide support in Chinese, English, French, German, Japanese and Spanish
- Extensive multi-media technical resources to help you
- We investigate all quality concerns to ensure our products perform to the highest standards

If the product does not perform as described on this datasheet, we will offer a refund or replacement. For full details of the Abpromise, please visit <http://www.abcam.co.jp/abpromise> or contact our technical team.

**Terms and conditions**

- Guarantee only valid for products bought direct from Abcam or one of our authorized distributors