


Product datasheet

Anti-SUGT1 antibody ab30931

★★★★★ 2 Abreviews 1 References 画像数 2

製品の概要

製品名	Anti-SUGT1 antibody
製品の詳細	Rabbit polyclonal to SUGT1
特異性	ab30931 appears to detect both recorded isoforms of SGT1, at 41 kDa and 38 kDa.
アプリケーション	適用あり: ICC/IF, WB
種交差性	交差種: Human 交差が予測される動物種: Mouse 
免疫原	Synthetic peptide conjugated to KLH derived from within residues 350 to the C-terminus of Human SUGT1. Immunogen の所有権に関して (Peptide available as ab37532 .)
ポジティブ・コントロール	ab30931 gave a positive result in the following whole cell lysates: HeLa (Human epithelial carcinoma cell line) Jurkat (Human T cell lymphoblast-like cell line) A431 (Human epithelial carcinoma cell line) HEK 293 (Human embryonic kidney cell line)

製品の特性

製品の状態	Liquid
保存方法	Shipped at 4°C. Store at +4°C short term (1-2 weeks). Upon delivery aliquot. Store at -20°C or -80°C. Avoid freeze / thaw cycle.
バッファー	Preservative: 0.02% Sodium Azide Constituents: 1% BSA, PBS, pH 7.4
精製度	Immunogen affinity purified
ポリ/モノ	ポリクローナル
アイソタイプ	IgG

アプリケーション

Our [Abpromise guarantee](#) covers the use of **ab30931** in the following tested applications.

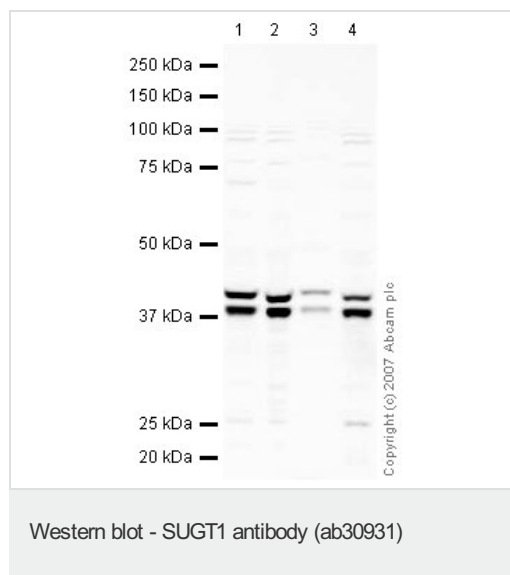
The application notes include recommended starting dilutions; optimal dilutions/concentrations should be determined by the end user.

アプリケーション	Abreviews	特記事項
ICC/IF	★★★★★	Use a concentration of 5 µg/ml.
WB	★★★★★	Use a concentration of 1 µg/ml. Detects a band of approximately 41 kDa (predicted molecular weight: 41 kDa).

ターゲット情報

機能	May play a role in ubiquitination and subsequent proteasomal degradation of target proteins.
配列類似性	Belongs to the SGT1 family. Contains 1 CS domain. Contains 1 SGS domain. Contains 3 TPR repeats.
ドメイン	The CS domain mediates interaction with HSP90.
翻訳後修飾	Phosphorylated at Ser-281 and Ser-331, dephosphorylation promotes nuclear translocation, most likely due to disruption of the SUGT1-HSP90 complex.
細胞内局在	Cytoplasm. Nucleus. Translocates to the nucleus upon heat shock, requiring S100A6.

画像



All lanes : Anti-SUGT1 antibody (ab30931) at 1 µg/ml

Lane 1 : HeLa (Human epithelial carcinoma cell line) Whole Cell Lysate

Lane 2 : Jurkat whole cell lysate ([ab7899](#))

Lane 3 : A431 whole cell lysate ([ab7909](#))

Lane 4 : HEK293 whole cell lysate ([ab7902](#))

Lysates/proteins at 10 µg per lane.

Secondary

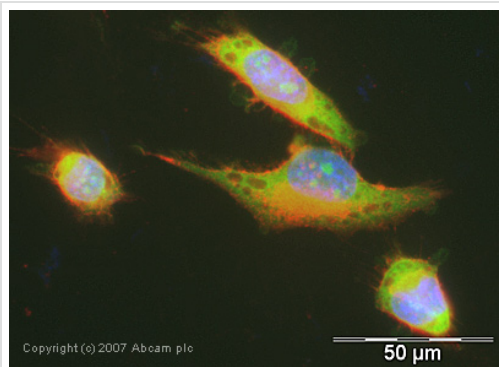
IRDye 680 Conjugated Goat Anti-Rabbit IgG (H+L) at 1/10000 dilution

Performed under reducing conditions.

Predicted band size : 41 kDa

Observed band size : 41 kDa

Additional bands at : 38 kDa (possible isoform).



Immunocytochemistry/ Immunofluorescence -
SUGT1 antibody (ab30931)

ICC/IF image of ab30931 stained human HeLa cells. The cells were PFA fixed (10 min), permeabilised in TBS-T (20 min) and incubated with the antibody (ab30931, 5µg/ml) for 1h at room temperature. 1%BSA / 10% normal serum / 0.3M glycine was used to quench autofluorescence and block non-specific protein-protein interactions. The secondary antibody (green) was Alexa Fluor® 488 goat anti-rabbit IgG (H+L) used at a 1/1000 dilution for 1h. Alexa Fluor® 594 WGA was used to label plasma membranes (red). DAPI was used to stain the cell nuclei (blue).

Please note: All products are "FOR RESEARCH USE ONLY AND ARE NOT INTENDED FOR DIAGNOSTIC OR THERAPEUTIC USE"

Our Abpromise to you: Quality guaranteed and expert technical support

- Replacement or refund for products not performing as stated on the datasheet
- Valid for 12 months from date of delivery
- Response to your inquiry within 24 hours
- We provide support in Chinese, English, French, German, Japanese and Spanish
- Extensive multi-media technical resources to help you
- We investigate all quality concerns to ensure our products perform to the highest standards

If the product does not perform as described on this datasheet, we will offer a refund or replacement. For full details of the Abpromise, please visit <http://www.abcam.co.jp/abpromise> or contact our technical team.

Terms and conditions

- Guarantee only valid for products bought direct from Abcam or one of our authorized distributors