


Product datasheet

Anti-SSX2IP antibody ab117824

画像数 1

製品の概要

製品名	Anti-SSX2IP antibody
製品の詳細	Rabbit polyclonal to SSX2IP
由来種	Rabbit
アプリケーション	適用あり: IP 適用なし: WB
種交差性	交差種: Human 交差が予測される動物種: Chimpanzee, Rhesus monkey, Gorilla, Orangutan 
免疫原	Synthetic peptide, corresponding to a region within amino acids 275-325 of Human SSX2IP according to NP_001159765.1
ポジティブ・コントロール	Whole cell lysate from 293T cells.

製品の特性

製品の状態	Liquid
保存方法	Shipped at 4°C. Upon delivery aliquot and store at -20°C. Avoid freeze / thaw cycles.
バッファー	Preservative: 0.09% Sodium azide Constituent: 99% Tris citrate/phosphate Note: pH: 7-8
精製度	Immunogen affinity purified
ポリモノ	ポリクローナル
アイソタイプ	IgG

アプリケーション

Our [Abpromise guarantee](#) covers the use of **ab117824** in the following tested applications.

The application notes include recommended starting dilutions; optimal dilutions/concentrations should be determined by the end user.

アプリケーション	Abreviews	特記事項
IP		Use at 2-10 µg/mg of lysate.

追加情報

Is unsuitable for WB.

ターゲット情報

機能

Belongs to an adhesion system, which plays a role in the organization of homotypic, interneuronal and heterotypic cell-cell adherens junctions (AJs). May connect the nectin-afadin and E-cadherin-catenin system through alpha-actinin and may be involved in organization of the actin cytoskeleton at AJs through afadin and alpha-actinin.

組織特異性

Widely expressed, with the highest expression in brain, intermediate expression in kidney, testis, spinal cord, liver, heart, lung, skeletal muscle, ovary, fetal liver and fetal brain, and little to no expression in pancreas and spleen. All specific brain regions showed intermediate to high expression, with highest expression in amygdala. Also expressed in fetal tissues, mainly in liver and brain.

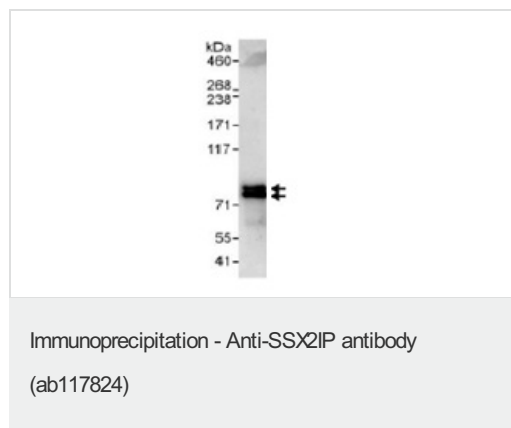
ドメイン

Both the N-terminal (up to position 79) and the C-terminal (from position 304) sequences are required for interaction with SSX2.

細胞内局在

Cell junction > adherens junction. Nucleus. Not found at cell-matrix AJs.

画像



Detection of Human SSX2IP by Immunoprecipitation in whole cell lysates of 293T cells (1 mg for IP, 20% of IP loaded) using ab117824 at 6 µg/mg of lysate. Subsequent WB detection was done using an Human SSX2IP antibody. Detection: Chemiluminescence with exposure time of 30 seconds.

Please note: All products are "FOR RESEARCH USE ONLY AND ARE NOT INTENDED FOR DIAGNOSTIC OR THERAPEUTIC USE"

Our Abpromise to you: Quality guaranteed and expert technical support

- Replacement or refund for products not performing as stated on the datasheet
- Valid for 12 months from date of delivery
- Response to your inquiry within 24 hours
- We provide support in Chinese, English, French, German, Japanese and Spanish
- Extensive multi-media technical resources to help you
- We investigate all quality concerns to ensure our products perform to the highest standards

If the product does not perform as described on this datasheet, we will offer a refund or replacement. For full details of the Abpromise, please visit <http://www.abcam.co.jp/abpromise> or contact our technical team.

Terms and conditions

- Guarantee only valid for products bought direct from Abcam or one of our authorized distributors