

Product datasheet

Anti-SRP72 antibody ab91409

画像数 1

製品の概要

製品名	Anti-SRP72 antibody
製品の詳細	Rabbit polyclonal to SRP72
アプリケーション	適用あり: WB, ELISA
種交差性	交差種: Human
免疫原	KLH conjugated synthetic peptide selected from the center region of Human SRP72, within the amino acid range 126-156.
ポジティブ・コントロール	Hela cell lysate

製品の特性

製品の状態	Liquid
保存方法	Shipped at 4°C. Upon delivery aliquot and store at -20°C. Avoid freeze / thaw cycles.
バッファー	Preservative: 0.09% Sodium Azide Constituents: PBS
精製度	Immunogen affinity purified
特記事項 (精製)	ab91409 is purified through a protein A column, followed by peptide affinity purification.
ポリ/モノ	ポリクローナル
アイソタイプ	IgG

アプリケーション

Our [Abpromise guarantee](#) covers the use of **ab91409** in the following tested applications.

The application notes include recommended starting dilutions; optimal dilutions/concentrations should be determined by the end user.

アプリケーション	Abreviews	特記事項
WB		
ELISA		

追加情報

ELISA: 1/1000.
WB: 1/100 - 1/500. Predicted molecular weight: 75 kDa.

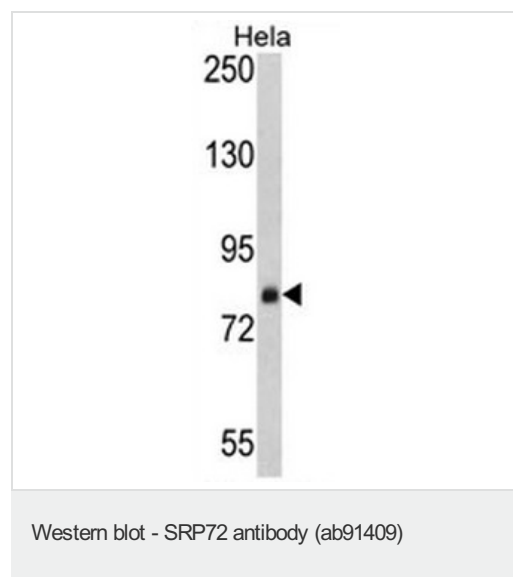
Not yet tested in other applications.

Optimal dilutions/concentrations should be determined by the end user.

ターゲット情報

機能	Signal-recognition-particle assembly has a crucial role in targeting secretory proteins to the rough endoplasmic reticulum membrane. Binds the 7S RNA only in presence of SRP68. This ribonucleoprotein complex might interact directly with the docking protein in the ER membrane and possibly participate in the elongation arrest function.
関連疾患	Bone marrow failure, familial
配列類似性	Belongs to the SRP72 family. Contains 5 TPR repeats.
ドメイン	The C-terminus is essential for the interaction with the SRP68/7S RNA complex.
細胞内局在	Cytoplasm. Endoplasmic reticulum.

画像



Anti-SRP72 antibody (ab91409) at 1/100
dilution + HeLa cell lysate at 35 µg

Predicted band size : 75 kDa

Please note: All products are "FOR RESEARCH USE ONLY AND ARE NOT INTENDED FOR DIAGNOSTIC OR THERAPEUTIC USE"

Our Abpromise to you: Quality guaranteed and expert technical support

- Replacement or refund for products not performing as stated on the datasheet
- Valid for 12 months from date of delivery
- Response to your inquiry within 24 hours
- We provide support in Chinese, English, French, German, Japanese and Spanish
- Extensive multi-media technical resources to help you
- We investigate all quality concerns to ensure our products perform to the highest standards

If the product does not perform as described on this datasheet, we will offer a refund or replacement. For full details of the Abpromise, please visit <http://www.abcam.co.jp/abpromise> or contact our technical team.

Terms and conditions

- Guarantee only valid for products bought direct from Abcam or one of our authorized distributors