


Product datasheet

Anti-SRP1 antibody ab6035

1 References [画像数 1](#)

製品の概要

製品名	Anti-SRP1 antibody
製品の詳細	Goat polyclonal to SRP1
由来種	Goat
アプリケーション	適用あり: WB
種交差性	交差種: Human 交差が予測される動物種: Mouse, Rat 
免疫原	Synthetic peptide: TTPGKENFRLKSY, corresponding to N terminal amino acids 2-14 of Human SRP1. Run BLAST with ExPASy Run BLAST with NCBI
ポジティブ・コントロール	Hela and Human Brain lysates.
特記事項	GenBank Accession Number – NP_002255.

Recombination activating proteins RAG1 and RAG2 regulate and mediate V(D)J recombination, the process by which genes for immunoglobulins and T-cell receptors are generated. Several other ubiquitously expressed proteins are thought to be recruited in the recombination process. Among these are the genes affected in severe combined immune deficiency and genes involved in ds-DNA break repair. The KPNA1 product interacts with RAG1 and may play a role in V(D)J recombination.

製品の特性

製品の状態	Liquid
保存方法	Shipped at 4°C. Upon delivery aliquot and store at -20°C or -80°C. Avoid repeated freeze / thaw cycles.
バッファー	Preservative: 0.02% Sodium Azide Constituents: 0.5% BSA, Tris-saline. pH 7.3
精製度	Immunogen affinity purified
特記事項 (精製)	Purified from goat serum by ammonium sulphate precipitation followed by antigen affinity chromatography using the immunizing peptide.
一次抗体 備考	Recombination activating proteins RAG1 and RAG2 regulate and mediate V(D)J recombination, the process by which genes for immunoglobulins and T-cell receptors are generated. Several

other ubiquitously expressed proteins are thought to be recruited in the recombination process. Among these are the genes affected in severe combined immune deficiency and genes involved in ds-DNA break repair. The KPNA1 product interacts with RAG1 and may play a role in V(D)J recombination.

ポリクローナル
アイソタイプ IgG

アプリケーション

Our [Abpromise guarantee](#) covers the use of **ab6035** in the following tested applications.

The application notes include recommended starting dilutions; optimal dilutions/concentrations should be determined by the end user.

アプリケーション	Abreviews	特記事項
WB		Use a concentration of 1 - 3 µg/ml. Detects a band of approximately 60 kDa (predicted molecular weight: 60 kDa). Can be blocked with Human SRP1 peptide (ab23141) .

ターゲット情報

機能 Functions in nuclear protein import as an adapter protein for nuclear receptor KPNA1. Binds specifically and directly to substrates containing either a simple or bipartite NLS motif. Docking of the importin/substrate complex to the nuclear pore complex (NPC) is mediated by KPNA1 through binding to nucleoporin FxFG repeats and the complex is subsequently translocated through the pore by an energy requiring, Ran-dependent mechanism. At the nucleoplasmic side of the NPC, Ran binds to importin-beta and the three components separate and importin-alpha and -beta are re-exported from the nucleus to the cytoplasm where GTP hydrolysis releases Ran from importin. The directionality of nuclear import is thought to be conferred by an asymmetric distribution of the GTP- and GDP-bound forms of Ran between the cytoplasm and nucleus. In vitro, mediates the nuclear import of human cytomegalovirus UL84 by recognizing a non-classical NLS.

組織特異性 Expressed ubiquitously.

配列類似性 Belongs to the importin alpha family.
Contains 10 ARM repeats.
Contains 1 IBB domain.

ドメイン Consists of an N-terminal hydrophilic region, a hydrophobic central region composed of 10 repeats, and a short hydrophilic C-terminus. The N-terminal hydrophilic region contains the importin beta binding domain (IBB domain), which is sufficient for binding importin beta and essential for nuclear protein import.
The IBB domain is thought to act as an intrasteric autoregulatory sequence by interacting with the internal autoinhibitory NLS. Binding of KPNA1 probably overlaps the internal NLS and contributes to a high affinity for cytoplasmic NLS-containing cargo substrates. After dissociation of the importin/substrate complex in the nucleus the internal autoinhibitory NLS contributes to a low affinity for nuclear NLS-containing proteins.
The major and minor NLS binding sites are mainly involved in recognition of simple or bipartite NLS motifs. Structurally located within a helical surface groove they contain several conserved Trp and Asn residues of the corresponding third helices (H3) of ARM repeats which mainly

contribute to binding.

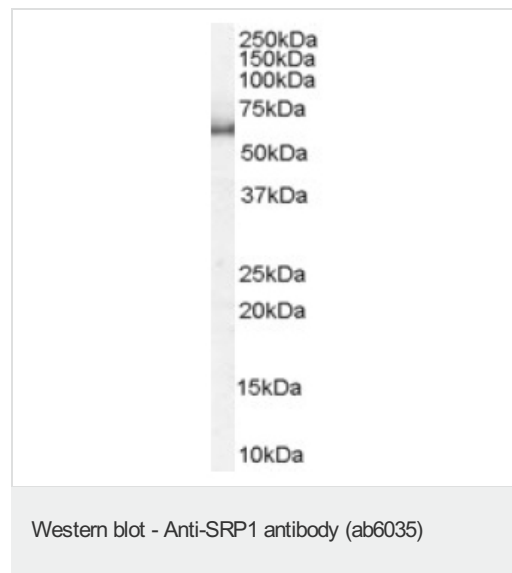
翻訳後修飾

Polyubiquitinated in the presence of RAG1 (in vitro).

細胞内局在

Cytoplasm. Nucleus.

画像



Anti-SRP1 antibody (ab6035) at 1 µg/ml +
HeLa lysate (RIPA buffer, 35µg total protein
per lane).

Predicted band size: 60 kDa

Observed band size: 60 kDa

Primary incubated for 1 hour. Detected by
western blot using chemiluminescence.

Please note: All products are "FOR RESEARCH USE ONLY AND ARE NOT INTENDED FOR DIAGNOSTIC OR THERAPEUTIC USE"

Our Abpromise to you: Quality guaranteed and expert technical support

- Replacement or refund for products not performing as stated on the datasheet
- Valid for 12 months from date of delivery
- Response to your inquiry within 24 hours
- We provide support in Chinese, English, French, German, Japanese and Spanish
- Extensive multi-media technical resources to help you
- We investigate all quality concerns to ensure our products perform to the highest standards

If the product does not perform as described on this datasheet, we will offer a refund or replacement. For full details of the Abpromise, please visit <http://www.abcam.co.jp/abpromise> or contact our technical team.

Terms and conditions

- Guarantee only valid for products bought direct from Abcam or one of our authorized distributors