

Product datasheet

Anti-SPTLC1 antibody ab84585

1 References [画像数 2](#)

製品の概要

製品名	Anti-SPTLC1 antibody
製品の詳細	Rabbit polyclonal to SPTLC1
アプリケーション	<b>適用あり:</b> WB, ICC/IF
種交差性	<b>交差種:</b> Human <b>交差が予測される動物種:</b> Mouse, Rat, Rabbit, Horse, Chicken, Guinea pig, Cow, Cat, Dog, Zebrafish ▲
免疫原	Synthetic peptide corresponding to a region within internal sequence amino acids 216-265 (DLERLLKEQE IEDQKNPRKA RVTRRFIVVE GLYMNTGTIC PLPELVKLY) of Human SPTLC1 (NP_006406). <a href="#">Run BLAST with ExPASy</a> <a href="#">Run BLAST with NCBI</a>
ポジティブ・コントロール	Human fetal brain lysate. This antibody gave a positive result when used in the following formaldehyde fixed cell lines: JEG3.

製品の特性

製品の状態	Liquid
保存方法	Shipped at 4°C. Upon delivery aliquot and store at -20°C. Avoid repeated freeze / thaw cycles.
バッファー	Preservative: None Constituents: 2% Sucrose, PBS
精製度	Immunogen affinity purified
ポリ/モノ	ポリクローナル
アイソタイプ	IgG

アプリケーション

Our [Abpromise guarantee](#) covers the use of **ab84585** in the following tested applications.

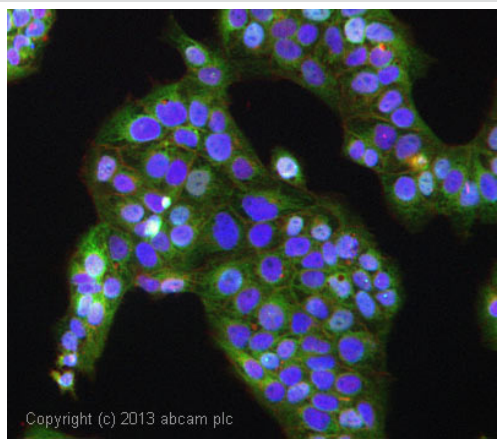
The application notes include recommended starting dilutions; optimal dilutions/concentrations should be determined by the end user.

アプリケーション	Abreviews	特記事項
WB		Use a concentration of 1 µg/ml. Predicted molecular weight: 53 kDa. Good results were obtained when blocked with 5% non-fat dry milk in 0.05% PBS-T.
ICC/IF		Use a concentration of 5 µg/ml.

## ターゲット情報

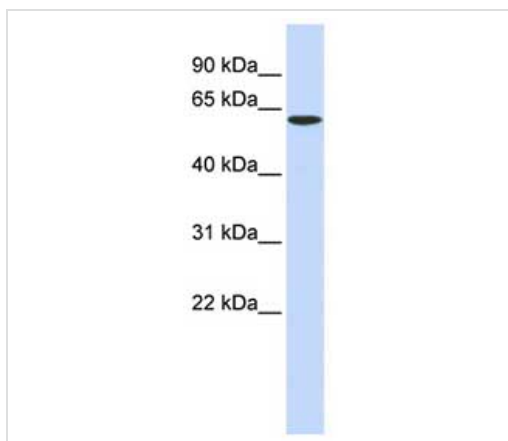
機能	Serine palmitoyltransferase (SPT). The heterodimer formed with LCB2 (SPTLC2 or SPTLC3) constitutes the catalytic core. The composition of the serine palmitoyltransferase (SPT) complex determines the substrate preference. The SPTLC1-SPTLC2-SSSPTA complex shows a strong preference for C16-CoA substrate, while the SPTLC1-SPTLC3-SSSPTA isozyme uses both C14-CoA and C16-CoA as substrates, with a slight preference for C14-CoA. The SPTLC1-SPTLC2-SSSPTB complex shows a strong preference for C18-CoA substrate, while the SPTLC1-SPTLC3-SSSPTB isozyme displays an ability to use a broader range of acyl-CoAs, without apparent preference.
組織特異性	Widely expressed. Not detected in small intestine.
パスウェイ	Lipid metabolism; sphingolipid metabolism.
関連疾患	Defects in SPTLC1 are the cause of hereditary sensory and autonomic neuropathy type 1A (HSAN1A) [MIM:162400]. The hereditary sensory and autonomic neuropathies are a genetically and clinically heterogeneous group of disorders characterized by degeneration of dorsal root and autonomic ganglion cells, and by sensory and/or autonomic abnormalities. HSAN1A is an autosomal dominant axonal neuropathy with onset in the second or third decades. Initial symptoms are loss of pain, touch, heat, and cold sensation over the feet, followed by distal muscle wasting and weakness. Loss of pain sensation leads to chronic skin ulcers and distal amputations.
配列類似性	Belongs to the class-II pyridoxal-phosphate-dependent aminotransferase family.
細胞内局在	Endoplasmic reticulum membrane.

## 画像



Immunocytochemistry/ Immunofluorescence - Anti-SPTLC1 antibody (ab84585)

ICC/IF image of ab84585 stained JEG3 cells. The cells were 4% formaldehyde fixed (10 min) and then incubated in 1%BSA / 10% normal goat serum / 0.3M glycine in 0.1% PBS-Tween for 1h to permeabilise the cells and block non-specific protein-protein interactions. The cells were then incubated with the antibody ab84585 at 5µg/ml overnight at +4°C. The secondary antibody (green) was DyLight® 488 goat anti- rabbit (ab96899) IgG (H+L) used at a 1/250 dilution for 1h. Alexa Fluor® 594 WGA was used to label plasma membranes (red) at a 1/200 dilution for 1h. DAPI was used to stain the cell nuclei (blue) at a concentration of 1.43µM.



Western blot - SPTLC1 antibody (ab84585)

Anti-SPTLC1 antibody (ab84585) at 1 µg/ml (in 5% skim milk / PBS buffer) + Human fetal brain lysate at 10 µg

#### Secondary

HRP conjugated anti-Rabbit IgG at 1/50000 dilution

**Predicted band size :** 53 kDa

**Observed band size :** 62 kDa

Gel concentration: 12%

**Please note:** All products are "FOR RESEARCH USE ONLY AND ARE NOT INTENDED FOR DIAGNOSTIC OR THERAPEUTIC USE"

### Our Abpromise to you: Quality guaranteed and expert technical support

- Replacement or refund for products not performing as stated on the datasheet
- Valid for 12 months from date of delivery
- Response to your inquiry within 24 hours
- We provide support in Chinese, English, French, German, Japanese and Spanish
- Extensive multi-media technical resources to help you
- We investigate all quality concerns to ensure our products perform to the highest standards

If the product does not perform as described on this datasheet, we will offer a refund or replacement. For full details of the Abpromise, please visit <http://www.abcam.co.jp/abpromise> or contact our technical team.

## Terms and conditions

---

- Guarantee only valid for products bought direct from Abcam or one of our authorized distributors