

Product datasheet

Anti-SOX9 antibody ab59265

1 Abreviews 5 References 画像数 3

製品の概要

製品名	Anti-SOX9 antibody
製品の詳細	Rabbit polyclonal to SOX9
由来種	Rabbit
特異性	Detects endogenous levels of total SOX9 protein.
アプリケーション	適用あり: WB, IHC-P, ELISA, ICC/IF, Flow Cyt, IP
種交差性	交差種: Human 交差が予測される動物種: Mouse ▲
免疫原	Synthetic non-phosphopeptide derived from human SOX9 around the phosphorylation site of serine 181 (R-K-S ^P -V-K).
ポジティブ・コントロール	Human brain.

製品の特性

製品の状態	Liquid
保存方法	Shipped at 4°C. Store at -20°C. Stable for 12 months at -20°C.
バッファー	Preservative: 0.02% Sodium Azide Constituents: 50% Glycerol, PBS (without Mg ²⁺ and Ca ²⁺), 150mM Sodium chloride, pH 7.4
精製度	Immunogen affinity purified
ポリ/モノ	ポリクローナル
アイソタイプ	IgG

アプリケーション

Our [Abpromise guarantee](#) covers the use of **ab59265** in the following tested applications.

The application notes include recommended starting dilutions; optimal dilutions/concentrations should be determined by the end user.

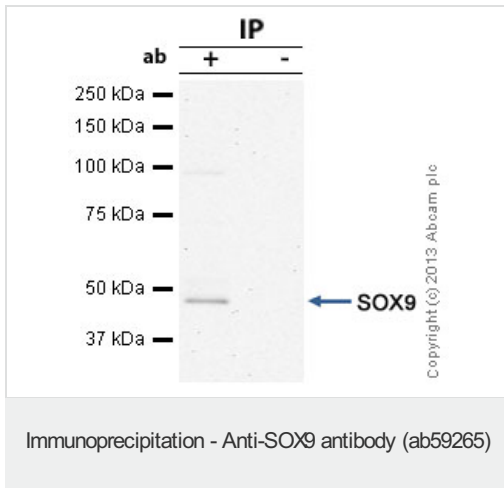
アプリケーション	Abreviews	特記事項
WB		1/500 - 1/1000. Detects a band of approximately 56 kDa (predicted molecular weight: 56 kDa).

アプリケーション	Abreviews	特記事項
IHC-P		Use at an assay dependent concentration.
ELISA		1/5000.
ICC/IF		Use at an assay dependent concentration. PubMed: 28135189
Flow Cyt		Use at an assay dependent concentration. PubMed: 21818404ab171870-Rabbit polyclonal IgG, is suitable for use as an isotype control with this antibody.
IP		Use a concentration of 5 µg/ml.

ターゲット情報

機能	Plays an important role in the normal skeletal development. May regulate the expression of other genes involved in chondrogenesis by acting as a transcription factor for these genes.
関連疾患	Defects in SOX9 are the cause of campomelic dysplasia (CMD1) [MIM:114290]. CMD1 is a rare, often lethal, dominantly inherited, congenital osteochondrodysplasia, associated with male-to-female autosomal sex reversal in two-thirds of the affected karyotypic males. A disease of the newborn characterized by congenital bowing and angulation of long bones, unusually small scapulae, deformed pelvis and spine and a missing pair of ribs. Craniofacial defects such as cleft palate, micrognathia, flat face and hypertelorism are common. Various defects of the ear are often evident, affecting the cochlea, malleus incus, stapes and tympanum. Most patients die soon after birth due to respiratory distress which has been attributed to hypoplasia of the tracheobronchial cartilage and small thoracic cage.
配列類似性	Contains 1 HMG box DNA-binding domain.
細胞内局在	Nucleus.

画像



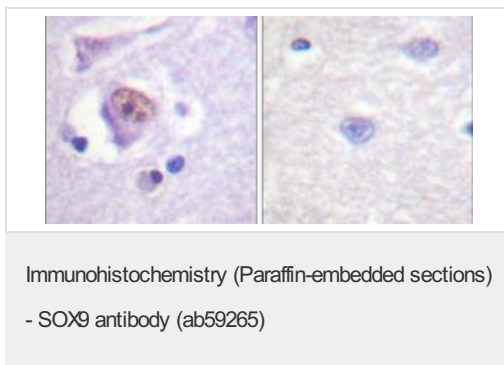
SOX9 was immunoprecipitated using 0.5mg SW480 whole cell extract, 5µg of Rabbit polyclonal to SOX9 and 50µl of protein G magnetic beads (+). No antibody was added to the control (-).

The antibody was incubated under agitation with Protein G beads for 10min, SW480 whole cell extract lysate diluted in RIPA buffer was added to each sample and incubated for a further 10min under agitation.

Proteins were eluted by addition of 40µl SDS loading buffer and incubated for 10min at 70°C; 10µl of each sample was separated on a SDS PAGE gel, transferred to a nitrocellulose membrane, blocked with 5% BSA and probed with ab59265.

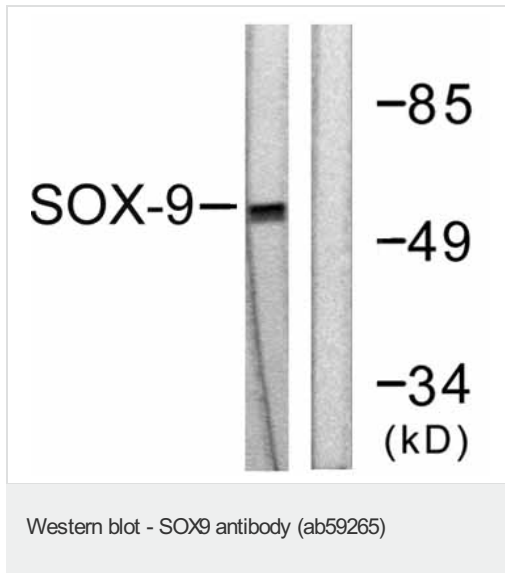
Secondary: Mouse monoclonal [SB62a]
Secondary Antibody to Rabbit IgG light chain (HRP) ([ab99697](#)).

Band: 56kDa; SOX9



Immunohistochemical analysis of paraffin-embedded human brain tissue using ab59265 at a dilution of 1/50-1/100. Left hand image - without immunising peptide; right hand image - with immunising peptide.

Immunohistochemical analysis of paraffin-embedded human brain tissue using ab59265 at a dilution of 1/50-1/100. Left hand image - without immunising peptide; right hand image - with immunising peptide.



All lanes : Anti-SOX9 antibody (ab59265) at 1/500 dilution

Lane 1 : extracts from 293 cells, treated with PBS (60mins)

Lane 2 : extracts from 293 cells, treated with PBS (60mins) with immunizing non-phosphopeptide

Predicted band size: 56 kDa

Observed band size: 56 kDa

Please note: All products are "FOR RESEARCH USE ONLY AND ARE NOT INTENDED FOR DIAGNOSTIC OR THERAPEUTIC USE"

Our Abpromise to you: Quality guaranteed and expert technical support

- Replacement or refund for products not performing as stated on the datasheet
- Valid for 12 months from date of delivery
- Response to your inquiry within 24 hours
- We provide support in Chinese, English, French, German, Japanese and Spanish
- Extensive multi-media technical resources to help you
- We investigate all quality concerns to ensure our products perform to the highest standards

If the product does not perform as described on this datasheet, we will offer a refund or replacement. For full details of the Abpromise, please visit <http://www.abcam.co.jp/abpromise> or contact our technical team.

Terms and conditions

- Guarantee only valid for products bought direct from Abcam or one of our authorized distributors