

Product datasheet

Anti-SMOC2 antibody ab78069

★★★★☆ 1 Abreviews 1 References 画像数 1

製品の概要

製品名	Anti-SMOC2 antibody
製品の詳細	Rabbit polyclonal to SMOC2
由来種	Rabbit
アプリケーション	適用あり: WB, ELISA, IHC-P
種交差性	交差種: Human
免疫原	Synthetic peptide (Human) from the N-terminus
ポジティブ・コントロール	Human brain cortex tissue

製品の特性

製品の状態	Liquid
保存方法	Shipped at 4°C. Upon delivery aliquot and store at -20°C. Avoid freeze / thaw cycles.
バッファー	Preservative: 0.01% Sodium Azide Constituents: 50% Glycerol, PBS
精製度	Immunogen affinity purified
ポリ/モノ	ポリクローナル
アイソタイプ	IgG

アプリケーション

Our [Abpromise guarantee](#) covers the use of **ab78069** in the following tested applications.

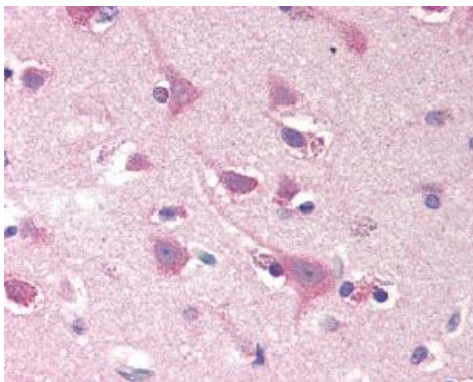
The application notes include recommended starting dilutions; optimal dilutions/concentrations should be determined by the end user.

アプリケーション	Abreviews	特記事項
WB		Use a concentration of 1 µg/ml. Predicted molecular weight: 50 kDa.
ELISA		Use a concentration of 1 µg/ml.
IHC-P	★★★★☆	Use a concentration of 20 µg/ml.

ターゲット情報

機能	Promotes matrix assembly and cell adhesiveness (By similarity). Can stimulate endothelial cell proliferation, migration, as well as angiogenesis.
関連疾患	Dentin dysplasia 1 (DTDP1) [MIM:125400]: A dental defect in which both primary and secondary dentitions are affected. The clinical crowns of both permanent and deciduous teeth are of normal shape, form and color in most cases, although they may be slightly opalescent and blue or brown. Teeth may be very mobile and exfoliate spontaneously because of inadequate root formation. On radiographs, the roots are short and may be more pointed than normal. Pulp chambers are usually absent except for a chevron-shaped remnant in the crown. Root canals are usually absent. Note=The disease is caused by mutations affecting the gene represented in this entry.
配列類似性	Contains 2 EF-hand domains. Contains 1 Kazal-like domain. Contains 2 thyroglobulin type-1 domains.
細胞内局在	Secreted > extracellular space > extracellular matrix > basement membrane.

画像



ab78069 used at 20 µg/ml, staining SMOC2 in human brain cortex.

Immunohistochemistry (Formalin/PFA-fixed paraffin-embedded sections) - Anti-SMOC2 antibody (ab78069)

Please note: All products are "FOR RESEARCH USE ONLY AND ARE NOT INTENDED FOR DIAGNOSTIC OR THERAPEUTIC USE"

Our Abpromise to you: Quality guaranteed and expert technical support

- Replacement or refund for products not performing as stated on the datasheet
- Valid for 12 months from date of delivery
- Response to your inquiry within 24 hours
- We provide support in Chinese, English, French, German, Japanese and Spanish
- Extensive multi-media technical resources to help you
- We investigate all quality concerns to ensure our products perform to the highest standards

If the product does not perform as described on this datasheet, we will offer a refund or replacement. For full details of the Abpromise, please visit <http://www.abcam.co.jp/abpromise> or contact our technical team.

Terms and conditions

- Guarantee only valid for products bought direct from Abcam or one of our authorized distributors