


Product datasheet

Anti-SMEK2 antibody ab92404

画像数 1

製品の概要

製品名	Anti-SMEK2 antibody
製品の詳細	Rabbit polyclonal to SMEK2
由来種	Rabbit
アプリケーション	適用あり: IHC-P
種交差性	交差種: Human 交差が予測される動物種: Rat, Chinese hamster 
免疫原	Synthetic peptide, corresponding to a region within C terminal amino acids 715-764 of Human SMEK2 (NP_065196.1).
ポジティブ・コントロール	Human breast carcinoma tissue

製品の特性

製品の状態	Liquid
保存方法	Shipped at 4°C. Upon delivery aliquot and store at -20°C. Avoid freeze / thaw cycles.
バッファー	Preservative: 0.09% Sodium Azide Constituents: 0.1% BSA, Tris buffered saline
精製度	Immunogen affinity purified
ポリ/モノ	ポリクローナル
アイソタイプ	IgG

アプリケーション

Our [Abpromise guarantee](#) covers the use of **ab92404** in the following tested applications.

The application notes include recommended starting dilutions; optimal dilutions/concentrations should be determined by the end user.

アプリケーション	Abreviews	特記事項
----------	-----------	------

IHC-P

追加情報

IHC-P: 1/100 - 1/500. Antigen retrieval recommended.

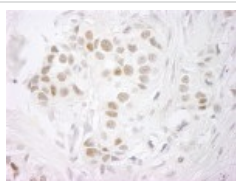
Not yet tested in other applications.

Optimal dilutions/concentrations should be determined by the end user.

ターゲット情報

関連性	SMEK2 contains a WH1 domain. There are five named isoforms produced by alternative splicing. Mapping of a diet-induced hypercholesterolemia locus (Dihc2) in rats identified SMEK2 as a strong candidate for responsiveness to dietary cholesterol.
細胞内局在	Cytoplasm. Cytoskeleton. Centrosome. Nucleus. Note: In interphase localized in the cytoplasm and (with higher levels) the nucleus. During metaphase located in pericentriolar regions.

画像



Formalin-fixed, paraffin-embedded section of human breast carcinoma stained with ab92404 used at a dilution of 1:250. Detection: DAB staining.

Immunohistochemistry (Formalin/PFA-fixed paraffin-embedded sections) - SMEK2 antibody (ab92404)

Please note: All products are "FOR RESEARCH USE ONLY AND ARE NOT INTENDED FOR DIAGNOSTIC OR THERAPEUTIC USE"

Our Abpromise to you: Quality guaranteed and expert technical support

- Replacement or refund for products not performing as stated on the datasheet
- Valid for 12 months from date of delivery
- Response to your inquiry within 24 hours
- We provide support in Chinese, English, French, German, Japanese and Spanish
- Extensive multi-media technical resources to help you
- We investigate all quality concerns to ensure our products perform to the highest standards

If the product does not perform as described on this datasheet, we will offer a refund or replacement. For full details of the Abpromise, please visit <http://www.abcam.co.jp/abpromise> or contact our technical team.

Terms and conditions

- Guarantee only valid for products bought direct from Abcam or one of our authorized distributors