



Product datasheet

Anti-SLC7A2 antibody ab64896

画像数 1

製品の概要

製品名	Anti-SLC7A2 antibody
製品の詳細	Rabbit polyclonal to SLC7A2
アプリケーション	適用あり: ELISA, IHC-P
種交差性	交差種: Human
免疫原	Synthetic peptide corresponding to Human SLC7A2 aa 612-632 conjugated to Keyhole Limpet Haemocyanin (KLH). Sequence: RDENNEEDAYPDNVHAAAE EK
	 Run BLAST with  Run BLAST with
ポジティブ・コントロール	Human kidney tissue.

製品の特性

製品の状態	Liquid
保存方法	Shipped at 4°C. Store at +4°C short term (1-2 weeks). Upon delivery aliquot. Store at -20°C long term.
バッファー	Preservative: 0.1% Sodium Azide Constituents: PBS
精製度	Protein G purified
ポリモノ	ポリクローナル
アイソタイプ	IgG

アプリケーション

Our [Abpromise guarantee](#) covers the use of **ab64896** in the following tested applications.

The application notes include recommended starting dilutions; optimal dilutions/concentrations should be determined by the end user.

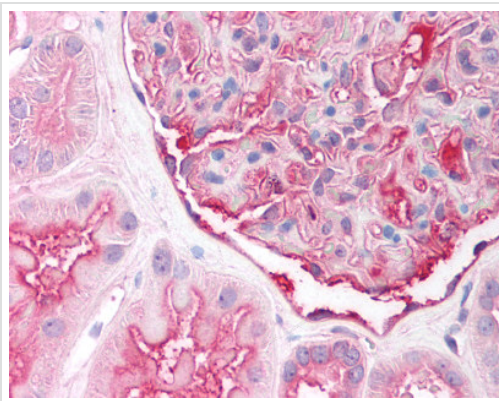
アプリケーション	Abreviews	特記事項
ELISA		1/1 - 1/1000.

アプリケーション	Abreviews	特記事項
IHC-P		Use a concentration of 10 µg/ml.

ターゲット情報

機能	Low-affinity, high capacity permease involved in the transport of the cationic amino acids (arginine, lysine and ornithine). Plays a regulatory role in classical or alternative activation of macrophages.
組織特異性	Expressed at high levels in the skeletal muscle, placenta and ovary. Expressed at intermediate levels in the liver and pancreas and at low levels in the kidney and heart.
配列類似性	Belongs to the amino acid-polyamine-organocation (APC) superfamily. Cationic amino acid transporter (CAT) (TC 2.A.3.3) family.
細胞内局在	Membrane.

画像



This image shows formalin fixed paraffin embedded human kidney tissue stained with ab64896 at 10µg/ml.

Immunohistochemistry (Formalin/PFA-fixed paraffin-embedded sections) - SLC7A2 antibody (ab64896)

Please note: All products are "FOR RESEARCH USE ONLY AND ARE NOT INTENDED FOR DIAGNOSTIC OR THERAPEUTIC USE"

Our Abpromise to you: Quality guaranteed and expert technical support

- Replacement or refund for products not performing as stated on the datasheet
- Valid for 12 months from date of delivery
- Response to your inquiry within 24 hours
- We provide support in Chinese, English, French, German, Japanese and Spanish
- Extensive multi-media technical resources to help you
- We investigate all quality concerns to ensure our products perform to the highest standards

If the product does not perform as described on this datasheet, we will offer a refund or replacement. For full details of the Abpromise,

please visit <http://www.abcam.co.jp/abpromise> or contact our technical team.

Terms and conditions

- Guarantee only valid for products bought direct from Abcam or one of our authorized distributors