

Product datasheet

Anti-SLC47A1 antibody ab92295

画像数 1

製品の概要

製品名	Anti-SLC47A1 antibody
製品の詳細	Goat polyclonal to SLC47A1
由来種	Goat
アプリケーション	適用あり: WB
種交差性	交差種: Human
免疫原	Synthetic peptide: C-PEHPQDGAKLSRKQ , corresponding to internal sequence (near C-Terminus) amino acids 528-541 of Human SLC47A1 (NP_060712.2). Run BLAST with Run BLAST with
ポジティブ・コントロール	Human Kidney lysate

製品の特性

製品の状態	Liquid
保存方法	Shipped at 4°C. Upon delivery aliquot and store at -20°C. Avoid freeze / thaw cycles.
バッファー	Preservative: 0.02% Sodium Azide Constituents: 0.5% BSA, Tris saline, pH 7.3
精製度	Immunogen affinity purified
特記事項(精製)	Purified from goat serum by ammonium sulphate precipitation followed by antigen affinity chromatography using the immunizing peptide.
ポリ/モノ	ポリクローナル
アイソタイプ	IgG

アプリケーション

Our [Abpromise guarantee](#) covers the use of **ab92295** in the following tested applications.

The application notes include recommended starting dilutions; optimal dilutions/concentrations should be determined by the end user.

WB

追加情報

WB: Use at a concentration of 0.1 - 0.3 µg/ml. Predicted molecular weight: 62 kDa.

Note: An additional band of unknown identity was also consistently observed at 26kDa. This band was successfully blocked by incubation with the immunizing peptide.

Not yet tested in other applications.

Optimal dilutions/concentrations should be determined by the end user.

ターゲット情報

機能

Solute transporter for tetraethylammonium (TEA), 1-methyl-4-phenylpyridinium (MPP), cimetidine, N-methylnicotinamide (NMN), metformin, creatinine, guanidine, procainamide, topotecan, estrone sulfate, acyclovir, ganciclovir and also the zwitterionic cephalosporin, cephalexin and cephradin. Seems to also play a role in the uptake of oxaliplatin (a new platinum anticancer agent). Able to transport paraquat (PQ or N,N-dimethyl-4'-bipyridinium); a widely used herbicide. Responsible for the secretion of cationic drugs across the brush border membranes.

組織特異性

Expressed in adrenal gland, and to a lower extent in liver, skeletal muscle and kidney (especially found in luminal membranes of the urinary tubules, bile caniculi and brush border membranes).

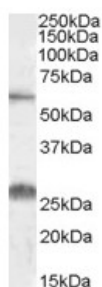
配列類似性

Belongs to the multi antimicrobial extrusion (MATE) (TC 2.A.66.1) family.

細胞内局在

Cell membrane. Predominantly localized at the plasma membrane but also found in intracellular organelles.

画像



Western blot - Anti-SLC47A1 antibody (ab92295)

Anti-SLC47A1 antibody (ab92295) at 0.1

µg/ml + Human Kidney lysate in RIPA buffer at 35 µg

Predicted band size: 62 kDa

An additional band of unknown identity was also consistently observed at 26kDa. This band was successfully blocked by incubation with the immunizing peptide.

Please note: All products are "FOR RESEARCH USE ONLY AND ARE NOT INTENDED FOR DIAGNOSTIC OR THERAPEUTIC USE"

- Replacement or refund for products not performing as stated on the datasheet
- Valid for 12 months from date of delivery
- Response to your inquiry within 24 hours

- We provide support in Chinese, English, French, German, Japanese and Spanish
- Extensive multi-media technical resources to help you
- We investigate all quality concerns to ensure our products perform to the highest standards

If the product does not perform as described on this datasheet, we will offer a refund or replacement. For full details of the Abpromise, please visit <http://www.abcam.co.jp/abpromise> or contact our technical team.

Terms and conditions

- Guarantee only valid for products bought direct from Abcam or one of our authorized distributors