


Product datasheet

Anti-SLC37A4 antibody ab80463

★★★★★ 2 Abreviews [画像数 2](#)

製品の概要

製品名	Anti-SLC37A4 antibody
製品の詳細	Rabbit polyclonal to SLC37A4
由来種	Rabbit
アプリケーション	適用あり: ICC/IF, WB, ELISA
種交差性	交差種: Human 交差が予測される動物種: Mouse, Rat, Rabbit, Horse, Guinea pig, Cow, Cat, Dog, Pig 
免疫原	Synthetic peptide: PSLVEEIPLD KDDLGFITSS QSAAYAISKF VSGVLSDQMS ARWLFSSGLL , corresponding to N terminal amino acids 35-84 of Human SLC37A4 (NP_001458) Run BLAST with ExPASy Run BLAST with NCBI
ポジティブ・コントロール	Fetal brain lysate.

製品の特性

製品の状態	Liquid
保存方法	Shipped at 4°C. Upon delivery aliquot and store at -20°C or -80°C. Avoid repeated freeze / thaw cycles.
バッファー	Preservative: None Constituents: 2% Sucrose, PBS
精製度	Immunogen affinity purified
特記事項 (精製)	ab80463 is purified by a peptide affinity chromatography method.
ポリ/モノ	ポリクローナル
アイソタイプ	IgG

アプリケーション

Our [Abpromise guarantee](#) covers the use of **ab80463** in the following tested applications.

The application notes include recommended starting dilutions; optimal dilutions/concentrations should be determined by the end user.

アプリ ケーショ ン	Abreviews	特記事項
------------------	-----------	------

ICC/IF ★★★★★ Use at an assay dependent concentration.

WB Use a concentration of 1 µg/ml. Detects a band of approximately 46 kDa (predicted molecular weight: 46 kDa). Good results were obtained when blocked with 5% non-fat dry milk in 0.05% PBS-T.

ELISA Use at an assay dependent concentration.
ELISA titre using peptide based assay: 1/312500.

ターゲット情報

機能 Transports glucose-6-phosphate from the cytoplasm to the lumen of the endoplasmic reticulum. Forms with glucose-6-phosphatase the complex responsible for glucose production through glycogenolysis and gluconeogenesis. Hence, it plays a central role in homeostatic regulation of blood glucose levels.

組織特異性 Mostly expressed in liver and kidney.

関連疾患 Defects in SLC37A4 are the cause of glycogen storage disease type 1B (GSD1B) [MIM:232220]. GSD1B is a metabolic disorder characterized by impairment of terminal steps of glycogenolysis and gluconeogenesis. GSD1 patients manifest a wide range of clinical symptoms and biochemical abnormalities, including hypoglycemia, severe hepatomegaly due to excessive accumulation of glycogen, kidney enlargement, growth retardation, lactic acidemia, hyperlipidemia, and hyperuricemia. GSD1B patients also present a tendency towards infections associated with neutropenia, relapsing aphthous gingivostomatitis, and inflammatory bowel disease.

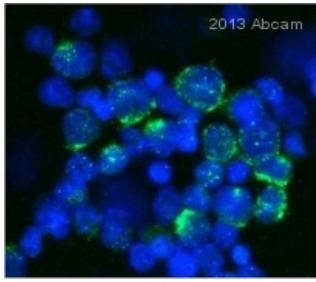
Defects in SLC37A4 are the cause of glycogen storage disease type 1C (GSD1C) [MIM:232240].

Defects in SLC37A4 are the cause of glycogen storage disease type 1D (GSD1D) [MIM:232240].

配列類似性 Belongs to the major facilitator superfamily. Organophosphate:Pi antiporter (OPA) (TC 2.A.1.4) family.

細胞内局在 Endoplasmic reticulum membrane.

画像



Immunocytochemistry/ Immunofluorescence - Anti-SLC37A4 antibody (ab80463)

This image is courtesy of an anonymous Abreview

ab80463 staining SLC37A4 in Mouse bone marrow cells by ICC/IF (Immunocytochemistry/immunofluorescence). Cells were fixed with formaldehyde, permeabilized with Triton X-100 0.1% and blocked with 5% serum for 2 hours at 21°C. Samples were incubated with primary antibody (1/100 in PBS + 2% BSA) for 12 hours at 4°C. An Alexa Fluor®488-conjugated Goat anti-rabbit IgG polyclonal (1/500) was used as the secondary antibody.



Western blot - SLC37A4 antibody (ab80463)

Anti-SLC37A4 antibody (ab80463) at 1 µg/ml + Fetal brain lysate at 10 µg

Secondary

HRP conjugated anti-Rabbit IgG at 1/50000 dilution

Predicted band size: 46 kDa

Observed band size: 46 kDa

Additional bands at: 25 kDa. We are unsure as to the identity of these extra bands.

Please note: All products are "FOR RESEARCH USE ONLY AND ARE NOT INTENDED FOR DIAGNOSTIC OR THERAPEUTIC USE"

Our Abpromise to you: Quality guaranteed and expert technical support

- Replacement or refund for products not performing as stated on the datasheet
- Valid for 12 months from date of delivery
- Response to your inquiry within 24 hours
- We provide support in Chinese, English, French, German, Japanese and Spanish
- Extensive multi-media technical resources to help you
- We investigate all quality concerns to ensure our products perform to the highest standards

If the product does not perform as described on this datasheet, we will offer a refund or replacement. For full details of the Abpromise, please visit <http://www.abcam.co.jp/abpromise> or contact our technical team.

Terms and conditions

- Guarantee only valid for products bought direct from Abcam or one of our authorized distributors