


Product datasheet

Anti-SLC25A33 antibody ab97820

画像数 1

製品の概要

製品名	Anti-SLC25A33 antibody
製品の詳細	Rabbit polyclonal to SLC25A33
由来種	Rabbit
アプリケーション	適用あり: WB
種交差性	交差種: Human 交差が予測される動物種: Mouse, Rat, Cow 
免疫原	Recombinant fragment containing a sequence corresponding to a region within amino acids 114-320 of Human SLC25A33 (NP_115691).
ポジティブ・コントロール	293T, A431, H1299, HeLaS3, HepG2, MOLT4 and Raji whole cell lysates

法規制情報

医薬用外毒物

製品の特性

製品の状態	Liquid
保存方法	Shipped at 4°C. Upon delivery aliquot. Store at -20°C or -80°C. Avoid freeze / thaw cycle.
バッファー	Preservative: 0.01% Thimerosal (merthiolate) Constituents: 10% Glycerol, 0.1M Tris, 0.1M Glycine, pH 7.0
精製度	Immunogen affinity purified
ポリ/モノ	ポリクローナル
アイソタイプ	IgG

アプリケーション

Our [Abpromise guarantee](#) covers the use of **ab97820** in the following tested applications.

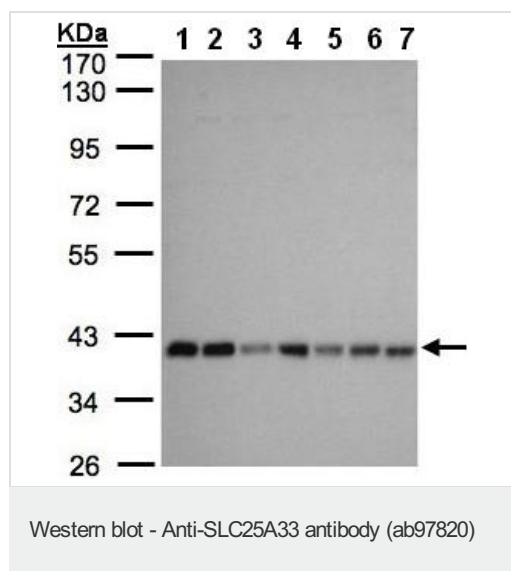
The application notes include recommended starting dilutions; optimal dilutions/concentrations should be determined by the end user.

アプリケーション	Abreviews	特記事項
WB		1/500 - 1/3000. Predicted molecular weight: 35 kDa.

ターゲット情報

機能	Probable mitochondrial transporter which participates in dendritic cell endocytosis. May associate with mitochondrial oxidative phosphorylation.
組織特異性	Expressed in the central nervous system. Also expressed in testis and skeletal muscle. Weakly expressed in heart, liver, kidney, prostate, colon and peripheral blood leukocytes.
配列類似性	Belongs to the mitochondrial carrier family. Contains 3 Solcar repeats.
細胞内局在	Mitochondrion inner membrane.

画像



All lanes : Anti-SLC25A33 antibody
(ab97820) at 1/1000 dilution

Lane 1 : 293T whole cell lysate

Lane 2 : A431 whole cell lysate

Lane 3 : H1299 whole cell lysate

Lane 4 : HeLaS3 whole cell lysate

Lane 5 : HepG2 whole cell lysate

Lane 6 : MOLT4 whole cell lysate

Lane 7 : Raji whole cell lysate

Lysates/proteins at 30 µg per lane.

Predicted band size: 35 kDa

10% SDS PAGE

Our Abpromise to you: Quality guaranteed and expert technical support

- Replacement or refund for products not performing as stated on the datasheet
- Valid for 12 months from date of delivery
- Response to your inquiry within 24 hours

- We provide support in Chinese, English, French, German, Japanese and Spanish
- Extensive multi-media technical resources to help you
- We investigate all quality concerns to ensure our products perform to the highest standards

If the product does not perform as described on this datasheet, we will offer a refund or replacement. For full details of the Abpromise, please visit <http://www.abcam.co.jp/abpromise> or contact our technical team.

Terms and conditions

- Guarantee only valid for products bought direct from Abcam or one of our authorized distributors