

## Product datasheet

# Anti-SLC25A19 antibody ab104076

### 画像数 1

#### 製品の概要

製品名	Anti-SLC25A19 antibody
製品の詳細	Rabbit polyclonal to SLC25A19
由来種	Rabbit
アプリケーション	<b>適用あり:</b> WB
種交差性	<b>交差種:</b> Mouse, Human
免疫原	Synthetic peptide conjugated to KLH, corresponding to a region within C terminal amino acids 244-274 of Human SLC25A19
ポジティブ・コントロール	Mouse heart tissue lysate

#### 製品の特性

製品の状態	Liquid
保存方法	Shipped at 4°C. Store at 4°C (up to 6 months). Store at -20°C long term.
バッファー	Preservative: 0.09% Sodium Azide Constituents: PBS
精製度	Immunogen affinity purified
特記事項 (精製)	ab104076 is purified through a protein A column, followed by peptide affinity purification.
ポリ/モノ	ポリクローナル
アイソタイプ	IgG

#### アプリケーション

Our [Abpromise guarantee](#) covers the use of **ab104076** in the following tested applications.

The application notes include recommended starting dilutions; optimal dilutions/concentrations should be determined by the end user.

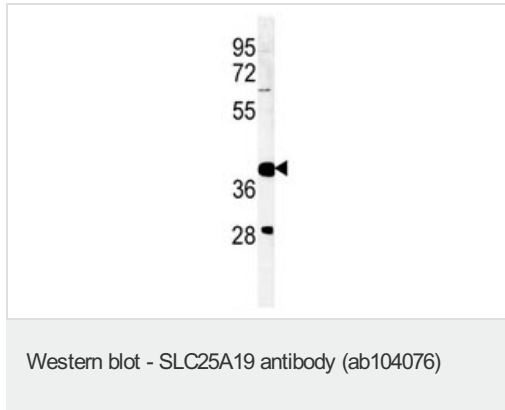
アプリケーション	Abreviews	特記事項
WB		1/100 - 1/500. Predicted molecular weight: 36 kDa.

#### ターゲット情報

---

関連性	SLC25A19 is a mitochondrial transporter mediating uptake of thiamine pyrophosphate (ThPP) into mitochondria.
細胞内局在	Mitochondrion inner membrane; Multi-pass membrane protein.

## 画像



Anti-SLC25A19 antibody (ab104076) at  
1/100 dilution + Mouse heart tissue lysate at  
35 µg

**Predicted band size: 36 kDa**

**Please note:** All products are "FOR RESEARCH USE ONLY AND ARE NOT INTENDED FOR DIAGNOSTIC OR THERAPEUTIC USE"

## Our Abpromise to you: Quality guaranteed and expert technical support

- Replacement or refund for products not performing as stated on the datasheet
- Valid for 12 months from date of delivery
- Response to your inquiry within 24 hours
- We provide support in Chinese, English, French, German, Japanese and Spanish
- Extensive multi-media technical resources to help you
- We investigate all quality concerns to ensure our products perform to the highest standards

If the product does not perform as described on this datasheet, we will offer a refund or replacement. For full details of the Abpromise, please visit <http://www.abcam.co.jp/abpromise> or contact our technical team.

## Terms and conditions

- Guarantee only valid for products bought direct from Abcam or one of our authorized distributors