

Product datasheet

Anti-SLC22A8 antibody ab69883

1 References [画像数 1](#)

製品の概要

製品名	Anti-SLC22A8 antibody
製品の詳細	Mouse polyclonal to SLC22A8
由来種	Mouse
特異性	This antibody is reactive against mammalian transfected lysate.
アプリケーション	適用あり: WB
種交差性	交差種: Human
免疫原	SLC22A8 (NP_004245, 1 a.a. ~ 542 a.a) human protein.
ポジティブ・コントロール	Transfected 293T cell lysate.

製品の特性

製品の状態	Liquid
保存方法	Shipped at 4°C. Upon delivery aliquot and store at -20°C or -80°C. Avoid repeated freeze / thaw cycles.
バッファー	Preservative: None Constituents: 1X PBS, pH 7.2
精製度	Protein A purified
ポリモノ	ポリクローナル
アイソタイプ	IgG

アプリケーション

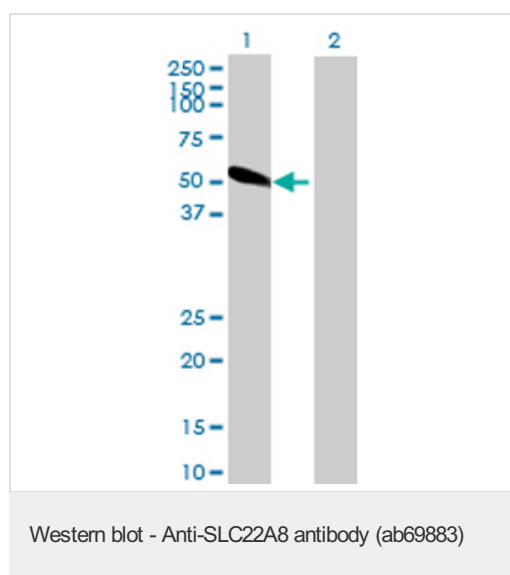
Our [Abpromise guarantee](#) covers the use of **ab69883** in the following tested applications.

The application notes include recommended starting dilutions; optimal dilutions/concentrations should be determined by the end user.

アプリケーション	Abreviews	特記事項
WB		1/500 - 1/1000. Detects a band of approximately 50 kDa (predicted molecular weight: 60 kDa).

機能	Plays an important role in the excretion/detoxification of endogenous and exogenous organic anions, especially from the brain and kidney. Involved in the transport basolateral of steviol, fexofenadine. Transports benzylpenicillin (PCG), estrone-3-sulfate (E1S), cimetidine (CMD), 2,4-dichloro-phenoxyacetate (2,4-D), p-amino-hippurate (PAH), acyclovir (ACV) and ochratoxin (OTA).
組織特異性	Expressed in kidney.
配列類似性	Belongs to the major facilitator (TC 2.A.1) superfamily. Organic cation transporter (TC 2.A.1.19) family.
細胞内局在	Basolateral cell membrane. Localizes on the brush border membrane of the choroid epithelial cells. Localizes to the basolateral membrane of the proximal tubular cells. Localizes on the abluminal and possibly, luminal membrane of the brain capillary endothelial cells (BCEC) (By similarity).

画像



All lanes : Anti-SLC22A8 antibody (ab69883)
at 1/500 dilution

Lane 1 : SLC22A8 transfected 293T cell
lysate

Lane 2 : Non-transfected 293T cell lysate

Lysates/proteins at 25 µg per lane.

Secondary

All lanes : Goat Anti-Mouse IgG (H&L)-HRP
Conjugate at 1/2500 dilution

Predicted band size: 60 kDa

Observed band size: 50 kDa

Please note: All products are "FOR RESEARCH USE ONLY AND ARE NOT INTENDED FOR DIAGNOSTIC OR THERAPEUTIC USE"

Our Abpromise to you: Quality guaranteed and expert technical support

- Replacement or refund for products not performing as stated on the datasheet
- Valid for 12 months from date of delivery
- Response to your inquiry within 24 hours
- We provide support in Chinese, English, French, German, Japanese and Spanish
- Extensive multi-media technical resources to help you
- We investigate all quality concerns to ensure our products perform to the highest standards

If the product does not perform as described on this datasheet, we will offer a refund or replacement. For full details of the Abpromise, please visit <http://www.abcam.co.jp/abpromise> or contact our technical team.

Terms and conditions

- Guarantee only valid for products bought direct from Abcam or one of our authorized distributors