

Product datasheet

Anti-SHP1 (phospho Y536) antibody ab41437

★★★★☆ 2 Abreviews 2 References 画像数 2

製品の概要

製品名	Anti-SHP1 (phospho Y536) antibody
製品の詳細	Rabbit polyclonal to SHP1 (phospho Y536)
由来種	Rabbit
特異性	Phospho-Tyr536-SHP1 specific. The antibody detects a 68 kDa band on SDS-PAGE immunoblots of human Jurkat cells treated with pervanadate (not observed in control cells).
アプリケーション	適用あり: WB, ELISA, ICC/IF
種交差性	交差種: Human 交差が予測される動物種: Mouse, Rat ▲
免疫原	Synthetic phospho-Tyr536-SHP1 peptide (coupled to carrier protein) corresponding to amino acids around tyrosine 536 in human SHP1. The sequence is highly conserved in rat and mouse SHP1.
ポジティブ・コントロール	This antibody gave a positive result when used in the following methanol fixed cell lines: HepG2

製品の特性

製品の状態	Liquid
保存方法	Shipped at 4°C. Store at 4°C (up to 6 months). Store at -20°C.
バッファー	Preservative: 0.05% Sodium Azide Constituents: 50% Glycerol, PBS, 1mg/ml BSA
精製度	Immunogen affinity purified
特記事項(精製)	This antibody was cross-adsorbed to a non specific phospho-tyrosine peptide then affinity purified using phospho-Tyr536-SHP1 peptide (immunogen).
ポリモノ	ポリクローナル
アイソタイプ	IgG

アプリケーション

Our [Abpromise guarantee](#) covers the use of **ab41437** in the following tested applications.

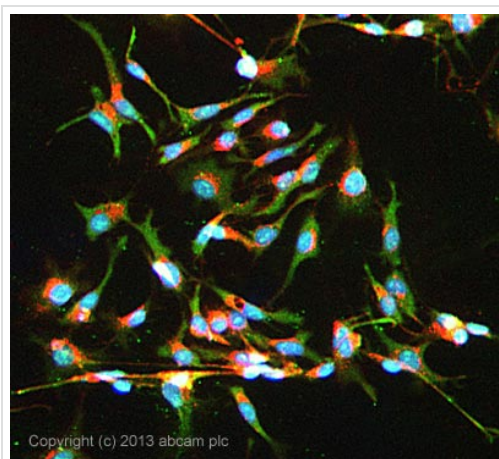
The application notes include recommended starting dilutions; optimal dilutions/concentrations should be determined by the end user.

アプリケーション	Abreviews	特記事項
WB	★★★★☆	1/1000. Detects a band of approximately 68 kDa (predicted molecular weight: 68 kDa).
ELISA		1/2000.
ICC/IF		1/200.

ターゲット情報

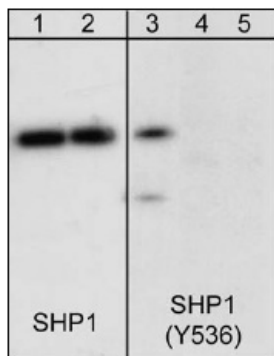
機能	Plays a key role in hematopoiesis. This PTPase activity may directly link growth factor receptors and other signaling proteins through protein-tyrosine phosphorylation. The SH2 regions may interact with other cellular components to modulate its own phosphatase activity against interacting substrates. Together with MTUS1, induces UBE2V2 expression upon angiotensin II stimulation.
組織特異性	Isoform 1 is expressed in hematopoietic cells. Isoform 2 is expressed in non-hematopoietic cells.
配列類似性	Belongs to the protein-tyrosine phosphatase family. Non-receptor class 2 subfamily. Contains 2 SH2 domains. Contains 1 tyrosine-protein phosphatase domain.
翻訳後修飾	Phosphorylated on serine and tyrosine residues.
細胞内局在	Cytoplasm. Nucleus. In neurons, translocates into the nucleus after treatment with angiotensin II.

画像



Immunocytochemistry/ Immunofluorescence - Anti-SHP1 (phospho Y536) antibody (ab41437)

ICC/IF image of ab41437 stained HepG2 cells. The cells were 100% methanol fixed (5 min) and then incubated in 1%BSA / 10% normal goat serum / 0.3M glycine in 0.1% PBS-Tween for 1h to permeabilise the cells and block non-specific protein-protein interactions. The cells were then incubated with the antibody ab41437 at 1/200 dilution overnight at +4°C. The secondary antibody (green) was DyLight® 488 goat anti- rabbit (ab96899) IgG (H+L) used at a 1/250 dilution for 1h. Alexa Fluor® 594 WGA was used to label plasma membranes (red) at a 1/200 dilution for 1h. DAPI was used to stain the cell nuclei (blue) at a concentration of 1.43µM.



Western blot - Anti-SHP1 (phospho Y536) antibody (ab41437)

Lanes 1-2 : anti-SHP1 (C-terminal)

Lanes 3-5 : Anti-SHP1 (phospho Y536) antibody (ab41437) at 1/1000 dilution

Lanes 1 & 3 : human Jurkat cells treated with 1 mM pervanadate for 30 min.

Lanes 2 & 4 : human Jurkat cells treated with 1 mM pervanadate for 30 min, blot exposed to alkaline phosphatase before probing

Lane 5 : human Jurkat cells treated with 1 mM pervanadate for 30 min. with phospho-Tyr536-SHP1 peptide

Predicted band size: 68 kDa

Observed band size: 68 kDa

Membrane was incubated with diluted antibody in 5% non-fat milk, PBS, 0.04% Tween20 for 1 hour at room temperature.

Please note: All products are "FOR RESEARCH USE ONLY AND ARE NOT INTENDED FOR DIAGNOSTIC OR THERAPEUTIC USE"

Our Abpromise to you: Quality guaranteed and expert technical support

- Replacement or refund for products not performing as stated on the datasheet
- Valid for 12 months from date of delivery
- Response to your inquiry within 24 hours
- We provide support in Chinese, English, French, German, Japanese and Spanish
- Extensive multi-media technical resources to help you
- We investigate all quality concerns to ensure our products perform to the highest standards

If the product does not perform as described on this datasheet, we will offer a refund or replacement. For full details of the Abpromise, please visit <http://www.abcam.co.jp/abpromise> or contact our technical team.

Terms and conditions

- Guarantee only valid for products bought direct from Abcam or one of our authorized distributors