

Product datasheet

Anti-SGK2 antibody - Carboxyterminal end ab71616

画像数 2

製品の概要

製品名	Anti-SGK2 antibody - Carboxyterminal end
製品の詳細	Rabbit polyclonal to SGK2 - Carboxyterminal end
由来種	Rabbit
アプリケーション	適用あり: WB, ELISA, IHC-P
種交差性	交差種: Human
免疫原	A KLH conjugated synthetic peptide selected from the C terminal region of human SGK2.
ポジティブ・コントロール	Human breast carcinoma tissue sections and placenta lysate.

製品の特性

製品の状態	Liquid
保存方法	Shipped at 4°C. Upon delivery aliquot and store at -20°C or -80°C. Avoid repeated freeze / thaw cycles.
バッファー	Preservative: 0.09% Sodium Azide Constituents: PBS
精製度	Protein G purified
特記事項 (精製)	This antibody is purified through a protein G column, eluted with high and low pH buffers and neutralized immediately, followed by dialysis against PBS.
ポリ/モノ	ポリクローナル
アイソタイプ	IgG

アプリケーション

Our [Abpromise guarantee](#) covers the use of **ab71616** in the following tested applications.

The application notes include recommended starting dilutions; optimal dilutions/concentrations should be determined by the end user.

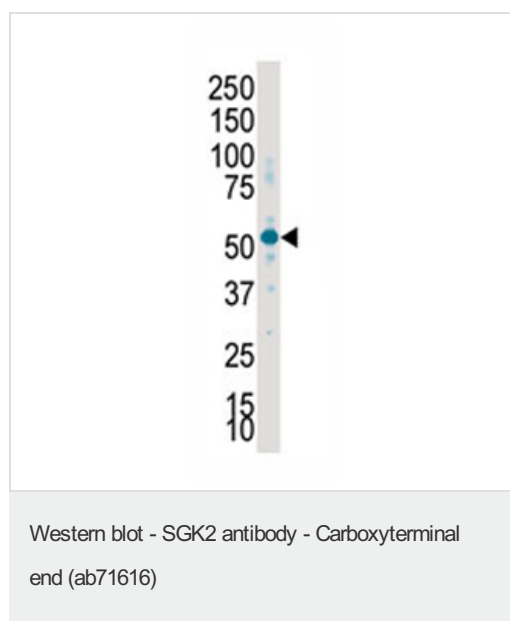
アプリケーション	Abreviews	特記事項
WB		1/100 - 1/500. Detects a band of approximately 55 kDa (predicted molecular weight: 48 kDa).
ELISA		1/1000.

アプリケーション	Abreviews	特記事項
IHC-P		1/50 - 1/100.

## ターゲット情報

<b>機能</b>	Involved in the activation of potassium channels.
<b>組織特異性</b>	Highly expressed in liver, kidney and pancreas, and at lower levels in brain.
<b>配列類似性</b>	Belongs to the protein kinase superfamily. AGC Ser/Thr protein kinase family. Contains 1 AGC-kinase C-terminal domain. Contains 1 protein kinase domain.

## 画像



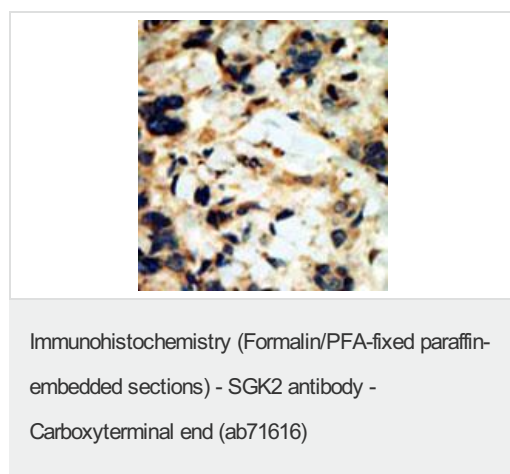
Anti-SGK2 antibody - Carboxyterminal end (ab71616) at 1/100 dilution + placenta lysate at 12.5 µg

### Secondary

HRP anti rabbit

**Predicted band size:** 48 kDa

**Observed band size:** 55 kDa



Formalin fixed and paraffin embedded human breast carcinoma tissue reacted with ab71616 at a 1/50 dilution. ab71616 was peroxidase conjugated to the secondary antibody, followed by DAB staining.

**Please note:** All products are "FOR RESEARCH USE ONLY AND ARE NOT INTENDED FOR DIAGNOSTIC OR THERAPEUTIC USE"

## **Our Abpromise to you: Quality guaranteed and expert technical support**

---

- Replacement or refund for products not performing as stated on the datasheet
- Valid for 12 months from date of delivery
- Response to your inquiry within 24 hours
  
- We provide support in Chinese, English, French, German, Japanese and Spanish
- Extensive multi-media technical resources to help you
- We investigate all quality concerns to ensure our products perform to the highest standards

If the product does not perform as described on this datasheet, we will offer a refund or replacement. For full details of the Abpromise, please visit <http://www.abcam.co.jp/abpromise> or contact our technical team.

## **Terms and conditions**

---

- Guarantee only valid for products bought direct from Abcam or one of our authorized distributors