

Product datasheet

Anti-SEH1L antibody ab122608

画像数 1

製品の概要

製品名	Anti-SEH1L antibody
製品の詳細	Rabbit polyclonal to SEH1L
アプリケーション	適用あり: IHC-P
種交差性	交差種: Human
免疫原	antigen sequence: LMLATCSADG IVRIYEAPDV MNLSQWSLQH EISCKLSCSC ISWNPSSSRA HSPMIAVGSD DSSPNAMAKV QI, corresponding to amino acids 128-199 of Human SEH1L. Run BLAST with ExPASy Run BLAST with NCBI
ポジティブ・コントロール	Human Stomach tissue.

製品の特性

製品の状態	Liquid
保存方法	Shipped at 4°C. Store at -20°C or -80°C. Avoid freeze / thaw cycle. Store undiluted.
バッファー	pH: 7.20 Preservative: 0.02% Sodium azide Constituents: 59% PBS, 40% Glycerol
精製度	Immunogen affinity purified
ポリ/モノ	ポリクローナル
アイソタイプ	IgG

アプリケーション

Our [Abpromise guarantee](#) covers the use of **ab122608** in the following tested applications.

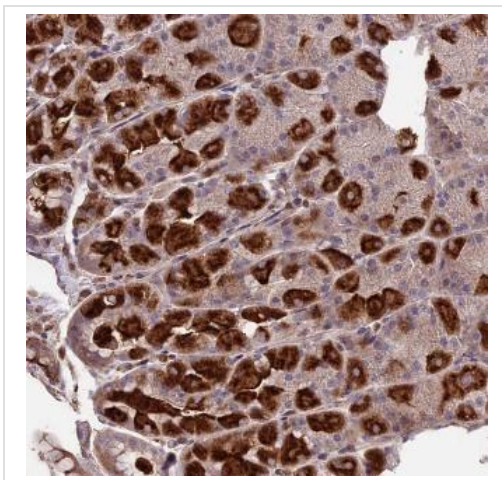
The application notes include recommended starting dilutions; optimal dilutions/concentrations should be determined by the end user.

アプリケーション	Abreviews	特記事項
IHC-P		1/50 - 1/200. Perform heat mediated antigen retrieval with citrate buffer pH 6 before commencing with IHC staining protocol.

ターゲット情報

機能	Component of the Nup107-160 subcomplex of the nuclear pore complex (NPC). The Nup107-160 subcomplex is required for the assembly of a functional NPC. The Nup107-160 subcomplex is also required for normal kinetochore microtubule attachment, mitotic progression and chromosome segregation. This subunit plays a role in recruitment of the Nup107-160 subcomplex to the kinetochore.
配列類似性	Belongs to the WD repeat SEC13 family. Contains 6 WD repeats.
細胞内局在	Chromosome > centromere > kinetochore. Nucleus > nuclear pore complex.

画像



ab122608, at 1/50 dilution, staining SEH1L in Paraffin-embedded Human Stomach tissue by Immunohistochemistry.

Immunohistochemistry (Formalin/PFA-fixed paraffin-embedded sections) - Anti-SEH1L antibody (ab122608)

Please note: All products are "FOR RESEARCH USE ONLY AND ARE NOT INTENDED FOR DIAGNOSTIC OR THERAPEUTIC USE"

Our Abpromise to you: Quality guaranteed and expert technical support

- Replacement or refund for products not performing as stated on the datasheet
- Valid for 12 months from date of delivery
- Response to your inquiry within 24 hours
- We provide support in Chinese, English, French, German, Japanese and Spanish
- Extensive multi-media technical resources to help you
- We investigate all quality concerns to ensure our products perform to the highest standards

If the product does not perform as described on this datasheet, we will offer a refund or replacement. For full details of the Abpromise, please visit <http://www.abcam.co.jp/abpromise> or contact our technical team.

Terms and conditions

- Guarantee only valid for products bought direct from Abcam or one of our authorized distributors