




Product datasheet

Anti-SEC61A antibody ab1327

1 References [画像数 1](#)

製品の概要

製品名	Anti-SEC61A antibody
製品の詳細	Goat polyclonal to SEC61A
アプリケーション	適用あり: WB, IHC-P, ICC/IF
種交差性	交差種: Mouse, Human 交差が予測される動物種: Cow, Dog, Pig 
免疫原	Synthetic peptide: C-KEQSEVGS MGALLF , corresponding to C terminal amino acids 463-476 of Human SEC61A(Peptide available as ab22804 .) Run BLAST with  Run BLAST with 
ポジティブ・コントロール	Human cerebellum and mouse brain lysate.

製品の特性

製品の状態	Liquid
保存方法	Shipped at 4°C. Upon delivery aliquot and store at -20°C. Avoid repeated freeze / thaw cycles.
バッファー	Preservative: 0.02% Sodium Azide Constituents: 0.5% BSA, 0.5mg/ml Tris, pH 7.3
精製度	IgG fraction
特記事項(精製)	Purified from goat serum by ammonium sulphate precipitation followed by antigen affinity chromatography using the immunizing peptide.
ポリ/モノ	ポリクローナル
アイソタイプ	IgG

アプリケーション

Our [Abpromise guarantee](#) covers the use of **ab1327** in the following tested applications.

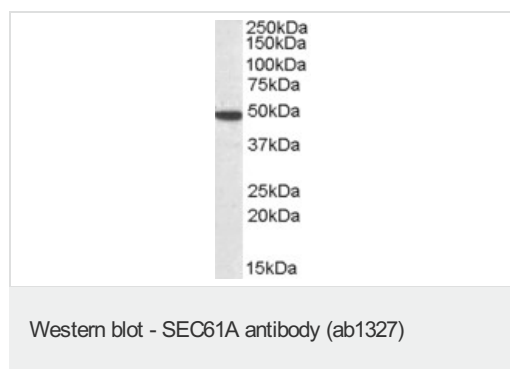
The application notes include recommended starting dilutions; optimal dilutions/concentrations should be determined by the end user.

アプリ ケーション	Abreviews	特記事項
WB		Use a concentration of 0.3 - 1 µg/ml. Detects a band of approximately 50 kDa (predicted molecular weight: 52 kDa). Can be blocked with Human SEC61A peptide (ab22804) .
IHC-P		Use a concentration of 3.75 µg/ml.
ICC/IF		Use at an assay dependent concentration. PubMed: 19934005

ターゲット情報

機能	Plays a crucial role in the insertion of secretory and membrane polypeptides into the ER. Required for assembly of membrane and secretory proteins. Tightly associated with membrane-bound ribosomes, either directly or through adapter proteins.
配列類似性	Belongs to the secY/SEC61-alpha family.
細胞内局在	Endoplasmic reticulum membrane.

画像



Anti-SEC61A antibody (ab1327) at 1 µg/ml +
Human cerebellum lysate in RIPA buffer at 35
µg

Predicted band size : 52 kDa

Please note: All products are "FOR RESEARCH USE ONLY AND ARE NOT INTENDED FOR DIAGNOSTIC OR THERAPEUTIC USE"

Our Abpromise to you: Quality guaranteed and expert technical support

- Replacement or refund for products not performing as stated on the datasheet
- Valid for 12 months from date of delivery
- Response to your inquiry within 24 hours
- We provide support in Chinese, English, French, German, Japanese and Spanish
- Extensive multi-media technical resources to help you
- We investigate all quality concerns to ensure our products perform to the highest standards

If the product does not perform as described on this datasheet, we will offer a refund or replacement. For full details of the Abpromise, please visit <http://www.abcam.co.jp/abpromise> or contact our technical team.

Terms and conditions

- Guarantee only valid for products bought direct from Abcam or one of our authorized distributors