


Product datasheet

Anti-SCC112 antibody ab17961

画像数 1

製品の概要

製品名	Anti-SCC112 antibody
製品の詳細	Rabbit polyclonal to SCC112
アプリケーション	適用あり: WB, IP
種交差性	交差種: Human 交差が予測される動物種: Chimpanzee, Rhesus monkey, Gorilla, Orangutan 
免疫原	Synthetic peptide corresponding to Human SCC112 aa 1250-1297 (C terminal). Database link: 23244 (Peptide available as ab40229)

製品の特性

製品の状態	Liquid
保存方法	Shipped at 4°C. Upon delivery aliquot and store at -20°C. Avoid freeze / thaw cycles.
バッファー	Preservative: 0.1% Sodium Azide Constituents: 8mM PBS, 60mM Citrate, 150mM Tris, pH 7-8
精製度	Immunogen affinity purified
ポリ/モノ	ポリクローナル
アイソタイプ	IgG

アプリケーション

Our [Abpromise guarantee](#) covers the use of **ab17961** in the following tested applications.

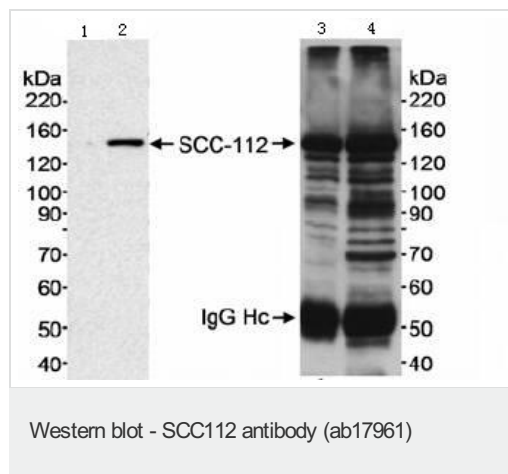
The application notes include recommended starting dilutions; optimal dilutions/concentrations should be determined by the end user.

アプリケーション	Abreviews	特記事項
WB		1/10000 - 1/25000. Detects a band of approximately 145 kDa (predicted molecular weight: 150 kDa).
IP		Use a concentration of 1 - 4 µg/ml.

ターゲット情報

機能	Probable regulator of sister chromatid cohesion in mitosis which may stabilize cohesin complex association with chromatin. May couple sister chromatid cohesion during mitosis to DNA replication. Cohesion ensures that chromosome partitioning is accurate in both meiotic and mitotic cells and plays an important role in DNA repair.
組織特異性	Highest level in colon. Low levels in lung, ovary, breast and kidney. Reduced level in renal tumor tissue. Isoform 2 is expressed in kidney.
配列類似性	Belongs to the PDS5 family. Contains 1 HEAT repeat.
発生段階	Cell cycle-regulated with highest level in G2 phase.
細胞内局在	Nucleus. Associated with chromatin through most of the cell cycle. Dissociates from chromatin in late prophase, reassociates during late telophase.

画像



Predicted band size : 150 kDa

Detection of Human SCC-112 by Western Blot and Immunoprecipitation.

Lane 1: WB; 5 µg of NE

Lane 2: WB; 20 µg of NE

Lane 3: IP (with a different antibody) followed by WB; 1 mg of NE

Lane 4: IP (with ab17961) followed by WB; 1 mg of NE
5 to 20 µg of nuclear extract (NE) from HeLa cell lysate were used for WB. 1 mg of nuclear extract (NE) from HeLa cell lysate were used for IP.

Detection: Chemiluminescence with an exposure time of less than 5 minutes.

Ab17961 was used at a dilution of 1/10,000 for the western blot and 2 µg/mg of extract for immunoprecipitation.

Please note: All products are "FOR RESEARCH USE ONLY AND ARE NOT INTENDED FOR DIAGNOSTIC OR THERAPEUTIC USE"

Our Abpromise to you: Quality guaranteed and expert technical support

- Replacement or refund for products not performing as stated on the datasheet

- Valid for 12 months from date of delivery
- Response to your inquiry within 24 hours

- We provide support in Chinese, English, French, German, Japanese and Spanish
- Extensive multi-media technical resources to help you
- We investigate all quality concerns to ensure our products perform to the highest standards

If the product does not perform as described on this datasheet, we will offer a refund or replacement. For full details of the Abpromise, please visit <http://www.abcam.co.jp/abpromise> or contact our technical team.

Terms and conditions

- Guarantee only valid for products bought direct from Abcam or one of our authorized distributors