


Product datasheet

Anti-SA1 antibody - ChIP Grade ab4457

7 References [画像数 2](#)

製品の概要

製品名	Anti-SA1 antibody - ChIP Grade
製品の詳細	Goat polyclonal to SA1 - ChIP Grade
由来種	Goat
アプリケーション	<b>適用あり:</b> WB, ICC, ChIP, ChIP/Chip
種交差性	<b>交差種:</b> Mouse, Human, Xenopus laevis <b>交差が予測される動物種:</b> Rabbit, Horse, Guinea pig, Cow, Dog, Pig, Chimpanzee, Ferret, Rhesus monkey 
免疫原	Synthetic peptide corresponding to Human SA1 aa 1150-1200.

製品の特性

製品の状態	Liquid
保存方法	Shipped at 4°C. Store at +4°C short term (1-2 weeks). Upon delivery aliquot. Store at -20°C. Avoid freeze / thaw cycle.
バッファー	Preservative: 0.1% Sodium azide Constituents: 0.021% PBS, 1.764% Sodium citrate, 1.815% Tris
精製度	Immunogen affinity purified
ポリ/モノ	ポリクローナル
アイソタイプ	IgG

アプリケーション

Our [Abpromise guarantee](#) covers the use of **ab4457** in the following tested applications.

The application notes include recommended starting dilutions; optimal dilutions/concentrations should be determined by the end user.

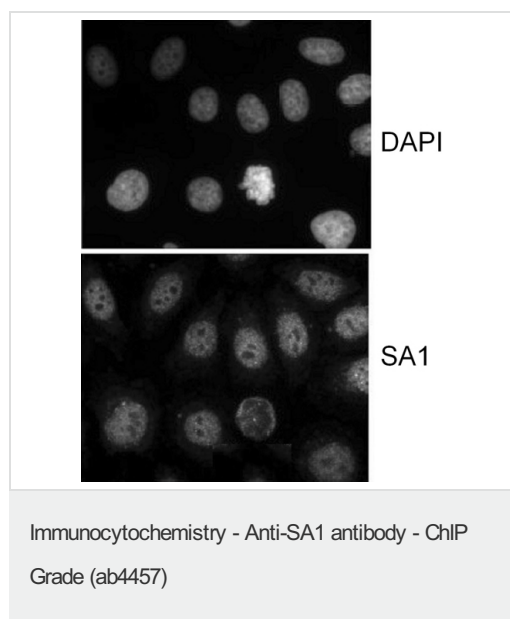
アプリケーション	Abreviews	特記事項
WB		1/1000 - 1/10000. Detects a band of approximately 144 kDa (predicted molecular weight: 144 kDa).
ICC		1/500 - 1/2000.

アプリケーション	Abreviews	特記事項
ChIP		Use at an assay dependent concentration. PubMed: 18550811
ChIP/Chip		Use at an assay dependent concentration. PubMed: 18550811

## ターゲット情報

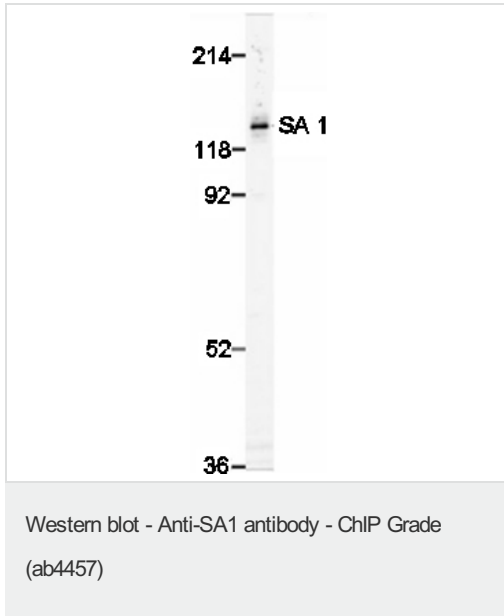
機能	Component of cohesin complex, a complex required for the cohesion of sister chromatids after DNA replication. The cohesin complex apparently forms a large proteinaceous ring within which sister chromatids can be trapped. At anaphase, the complex is cleaved and dissociates from chromatin, allowing sister chromatids to segregate. The cohesin complex may also play a role in spindle pole assembly during mitosis.
配列類似性	Belongs to the SCC3 family. Contains 1 SCD (stromalin conservative) domain.
翻訳後修飾	Phosphorylated by PLK. The large dissociation of cohesin from chromosome arms during prophase is partly due to its phosphorylation.
細胞内局在	Nucleus. Chromosome. Chromosome > centromere. Associates with chromatin. Before prophase it is scattered along chromosome arms. During prophase, most of cohesin complexes dissociate from chromatin probably because of phosphorylation by PLK, except at centromeres, where cohesin complexes remain. At anaphase, the RAD21 subunit of cohesin is cleaved, leading to the dissociation of the complex from chromosomes, allowing chromosome separation.

## 画像



Immunocytochemistry analysis of HeLa cells (extracted for 5 minutes at 4°C in 0.5% Triton in CSK buffer) labelling SA1 with ab4457 at 1µg/ml.

Immunocytochemistry - Anti-SA1 antibody - ChIP  
Grade (ab4457)



Nuclear Extract from HeLa cells (~5 x 10<sup>5</sup> cells).

ab4457 at 0.5 µg/ml.

Detection: ECL with 15 second exposure.

Nuclear Extract from HeLa cells (~5 x 10<sup>5</sup> cells).

ab4457 at 0.5 µg/ml.

Detection: ECL with 15 second exposure.

**Please note:** All products are "FOR RESEARCH USE ONLY AND ARE NOT INTENDED FOR DIAGNOSTIC OR THERAPEUTIC USE"

**Our Abpromise to you: Quality guaranteed and expert technical support**

- Replacement or refund for products not performing as stated on the datasheet
- Valid for 12 months from date of delivery
- Response to your inquiry within 24 hours
- We provide support in Chinese, English, French, German, Japanese and Spanish
- Extensive multi-media technical resources to help you
- We investigate all quality concerns to ensure our products perform to the highest standards

If the product does not perform as described on this datasheet, we will offer a refund or replacement. For full details of the Abpromise, please visit <http://www.abcam.co.jp/abpromise> or contact our technical team.

**Terms and conditions**

- Guarantee only valid for products bought direct from Abcam or one of our authorized distributors