

Product datasheet

Anti-Ribosomal protein L26 antibody ab84359

画像数 2

製品の概要

製品名	Anti-Ribosomal protein L26 antibody
製品の詳細	Rabbit polyclonal to Ribosomal protein L26
由来種	Rabbit
アプリケーション	適用あり: IHC-P
種交差性	交差種: Human 交差が予測される動物種: Mouse, Rat, Rabbit, Horse, Chicken, Guinea pig, Cow, Turkey, Pig, Xenopus laevis, Chimpanzee, Zebrafish, Rhesus monkey, Gorilla, Xenopus tropicalis
免疫原	Synthetic peptide from within a region between residue 100 and the C terminus (residue 145) of human Ribosomal Protein L26 (accession number: NP_000978.1)
ポジティブ・コントロール	Ovarian carcinoma; human skin basal cell carcinoma

製品の特性

製品の状態	Liquid
保存方法	Shipped at 4°C. Upon delivery aliquot and store at -20°C. Avoid freeze / thaw cycles.
バッファー	Preservative: 0.09% Sodium Azide Constituents: 0.1% BSA, Tris buffered saline
精製度	Immunogen affinity purified
ポリ/モノ	ポリクローナル
アイソタイプ	IgG

アプリケーション

Our [Abpromise guarantee](#) covers the use of **ab84359** in the following tested applications.

The application notes include recommended starting dilutions; optimal dilutions/concentrations should be determined by the end user.

アプリケーション	Abreviews	特記事項
----------	-----------	------

IHC-P

追加情報

IHC-P: 1/100 - 1/500. Epitope exposure is recommended. Epitope exposure with citrate buffer

will enhance staining.

Not yet tested in other applications.

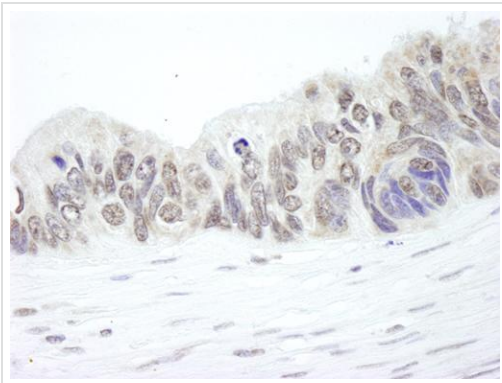
Optimal dilutions/concentrations should be determined by the end user.

ターゲット情報

配列類似性

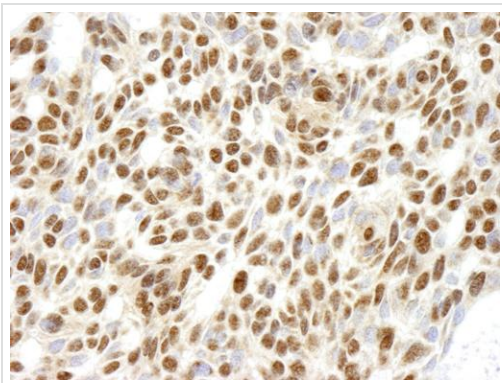
Belongs to the ribosomal protein L24P family.

画像



Detection of Human Ribosomal protein L26 in formalin-fixed paraffin-embedded section of human ovarian carcinoma by Immunohistochemistry using ab84359 at a dilution of 1:500. Detection was performed by DAB staining using anti-Rabbit IHC antibody at a dilution of 1:100.

Immunohistochemistry (Formalin/PFA-fixed paraffin-embedded sections) - Ribosomal protein L26 antibody (ab84359)



Detection of Human Ribosomal protein L26 in formalin-fixed paraffin-embedded section of human skin basal cell carcinoma by Immunohistochemistry using ab84359 at a dilution of 1:250. Detection was performed by DAB staining using anti-Rabbit IHC antibody at a dilution of 1:100.

Immunohistochemistry (Formalin/PFA-fixed paraffin-embedded sections) - Ribosomal protein L26 antibody (ab84359)

Please note: All products are "FOR RESEARCH USE ONLY AND ARE NOT INTENDED FOR DIAGNOSTIC OR THERAPEUTIC USE"

Our Abpromise to you: Quality guaranteed and expert technical support

- Replacement or refund for products not performing as stated on the datasheet

- Valid for 12 months from date of delivery
- Response to your inquiry within 24 hours

- We provide support in Chinese, English, French, German, Japanese and Spanish
- Extensive multi-media technical resources to help you
- We investigate all quality concerns to ensure our products perform to the highest standards

If the product does not perform as described on this datasheet, we will offer a refund or replacement. For full details of the Abpromise, please visit <http://www.abcam.co.jp/abpromise> or contact our technical team.

Terms and conditions

- Guarantee only valid for products bought direct from Abcam or one of our authorized distributors