


Product datasheet

Anti-Rhodopsin antibody ab112576

★★★★★ 1 Abreviews 1 References 画像数 2

製品の概要

製品名	Anti-Rhodopsin antibody
製品の詳細	Rabbit polyclonal to Rhodopsin
由来種	Rabbit
アプリケーション	適用あり: IHC-P, WB
種交差性	交差種: Rat, Human 交差が予測される動物種: Mouse, Rabbit, Pig 
免疫原	Synthetic peptide conjugated to KLH derived from within residues 150 - 250 of Human Rhodopsin.Immunogen の所有権に関して
ポジティブ・コントロール	WB: Y79 and WERI whole cell lysates. IHC-P: Rat normal eye tissue.

製品の特性

製品の状態	Liquid
保存方法	Shipped at 4°C. Store at +4°C short term (1-2 weeks). Upon delivery aliquot. Store at -20°C or -80°C. Avoid freeze / thaw cycle.
バッファー	pH: 7.40 Preservative: 0.02% Sodium azide Constituent: PBS Note: Batches of this product that have a concentration < 1mg/ml may have BSA added as a stabilising agent. If you would like information about the formulation of a specific lot, please contact our scientific support team who will be happy to help.
精製度	Immunogen affinity purified
ポリ/モノ	ポリクローナル
アイソタイプ	IgG

アプリケーション

Our [Abpromise guarantee](#) covers the use of **ab112576** in the following tested applications.

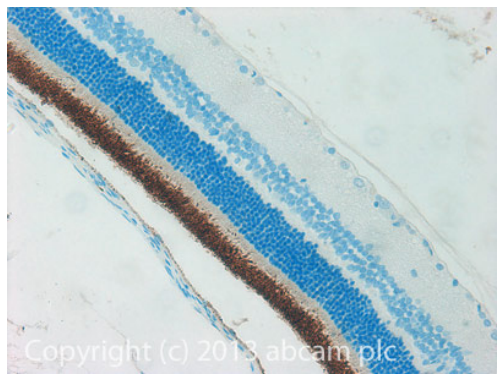
The application notes include recommended starting dilutions; optimal dilutions/concentrations should be determined by the end user.

アプリケーション	Abreviews	特記事項
IHC-P		Use a concentration of 0.5 µg/ml. The optimal concentration will need to be determined. 0.5ug/mL gave a good result with a polymer-HRP secondary antibody reagent.
WB		Use a concentration of 1 µg/ml. Detects a band of approximately 48 kDa (predicted molecular weight: 39 kDa).

## ターゲット情報

機能	Photoreceptor required for image-forming vision at low light intensity. Required for photoreceptor cell viability after birth. Light-induced isomerization of 11-cis to all-trans retinal triggers a conformational change leading to G-protein activation and release of all-trans retinal.
組織特異性	Rod shaped photoreceptor cells which mediates vision in dim light.
関連疾患	Retinitis pigmentosa 4 Night blindness, congenital stationary, autosomal dominant 1
配列類似性	Belongs to the G-protein coupled receptor 1 family. Opsin subfamily.
翻訳後修飾	Phosphorylated on some or all of the serine and threonine residues present in the C-terminal region. Contains one covalently linked retinal chromophore.
細胞内局在	Membrane. Synthesized in the inner segment (IS) of rod photoreceptor cells before vectorial transport to the rod outer segment (OS) photosensory cilia.

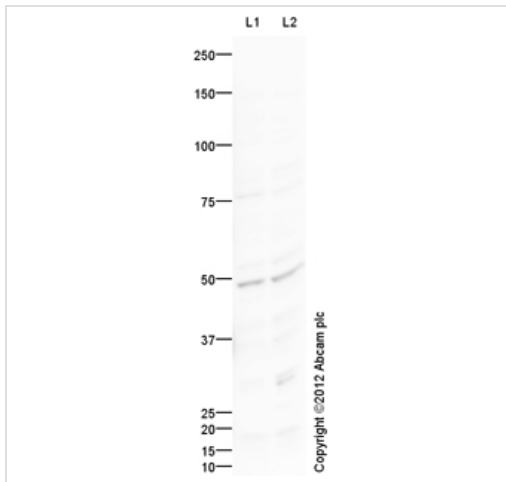
## 画像



Immunohistochemistry (Formalin/PFA-fixed paraffin-embedded sections) - Anti-Rhodopsin antibody (ab112576)

IHC image of Rhodopsin staining in Rat normal eye formalin fixed paraffin embedded tissue section, performed on a Leica Bond™ system using the standard protocol F. The section was pre-treated using heat mediated antigen retrieval with sodium citrate buffer (pH6, epitope retrieval solution 1) for 20 mins. The section was then incubated with ab112576, 0.5µg/ml, for 15 mins at room temperature and detected using an HRP conjugated compact polymer system. DAB was used as the chromogen. The section was then counterstained with haematoxylin and mounted with DPX.

For other IHC staining systems (automated and non-automated) customers should optimize variable parameters such as antigen retrieval conditions, primary antibody concentration and antibody incubation times.



Western blot - Anti-Rhodopsin antibody (ab112576)

**All lanes :** Anti-Rhodopsin antibody  
(ab112576) at 1 µg/ml

**Lane 1 :** Y79 (Human retinoblastoma cell line)  
Whole Cell Lysate

**Lane 2 :** WERI (Human Retinoblastoma)  
Whole Cell Lysate

Lysates/proteins at 10 µg per lane.

### Secondary

**All lanes :** Goat Anti-Rabbit IgG H&L (HRP)  
preadsorbed (ab97080) at 1/5000 dilution

Developed using the ECL technique.

Performed under reducing conditions.

**Predicted band size:** 39 kDa

**Observed band size:** 48 kDa

**Exposure time:** 2 minutes

The predicted molecular weight of Rhodopsin is 39 kDa (SwissProt), however we expect to observe a banding pattern around 48 kDa. Abcam welcomes customer feedback and would appreciate any comments regarding this product and the data presented above.

**Please note:** All products are "FOR RESEARCH USE ONLY AND ARE NOT INTENDED FOR DIAGNOSTIC OR THERAPEUTIC USE"

### Our Abpromise to you: Quality guaranteed and expert technical support

- Replacement or refund for products not performing as stated on the datasheet
- Valid for 12 months from date of delivery
- Response to your inquiry within 24 hours
- We provide support in Chinese, English, French, German, Japanese and Spanish
- Extensive multi-media technical resources to help you
- We investigate all quality concerns to ensure our products perform to the highest standards

If the product does not perform as described on this datasheet, we will offer a refund or replacement. For full details of the Abpromise,

please visit <http://www.abcam.co.jp/abpromise> or contact our technical team.

## Terms and conditions

---

- Guarantee only valid for products bought direct from Abcam or one of our authorized distributors