

Product datasheet

Recombinant human TRAP1 protein ab123775

画像数 1

製品の概要

製品名	Recombinant human TRAP1 protein
タンパク質長	Full length protein

製品の詳細

由来	Recombinant
由来	Escherichia coli
アミノ酸配列	
アクセッション番号	Q12931
生物種	Human
分子量	77 kDa including tags
タグ	DDDDK tag C-Terminus
配列の追加情報	Immunogen length = 702 amino acid residues

特性

Our [Abpromise guarantee](#) covers the use of **ab123775** in the following tested applications.

The application notes include recommended starting dilutions; optimal dilutions/concentrations should be determined by the end user.

生理活性	<p>SPECIFIC ACTIVITY:</p> <p>Kd= 1.95 nM Assay conditions: 20 mM HEPES, pH 7.5, 50 mM KCl, 5 mM MgCl<sub>2</sub>, 20 mM sodium molybdate, 2 mM DTT, 0.01% NP40, 100 µg/ml BSA, 50 nM TRAP1, geldanamycin-FITC (titration range 0.016-16 nM) incubated at 4°C for 24 hrs. Fluorescence polarization measured at RT (Ex/Em= 485/520 nm)</p>
------	---

アプリケーション	<p>SDS-PAGE</p> <p>Functional Studies</p>
----------	---

精製度	> 95 % SDS-PAGE.
-----	------------------

製品の状態	Liquid
-------	--------

備考	Kd = 1.95 nM. Assay conditions: 20 mM HEPES, pH 7.5, 50 mM KCl, 5 mM MgCl <sub>2</sub> , 20 mM sodium molybdate, 2 mM DTT, 0.01% NP40, 100 µg/ml BSA, 50 nM TRAP1, geldanamycin-FITC (titration range 0.016-16 nM) incubated at 4°C for 24 hrs. Fluorescence polarization
----	---

measured at RT (Ex/Em= 485/520 nm).

## 前処理および保存

### 保存方法および安定性

Shipped on dry ice. Upon delivery aliquot and store at -80°C. Avoid freeze / thaw cycles.

pH: 7.40

Constituents: 1.06% Potassium phosphate, 0.008% DTT, 0.015% EDTA, 2.5% Glycerol, 0.29% Sodium chloride

This product is an active protein and may elicit a biological response in vivo, handle with caution.

## 関連情報

### 機能

Chaperone that expresses an ATPase activity.

### 組織特異性

Found in skeletal muscle, liver, heart, brain, kidney, pancreas, lung and placenta.

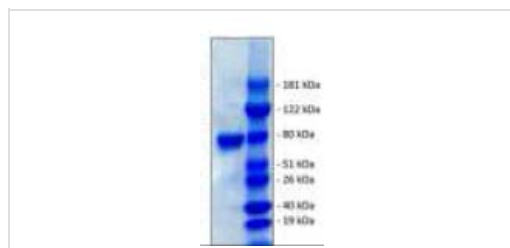
### 配列類似性

Belongs to the heat shock protein 90 family.

### 細胞内局在

Mitochondrion.

## 画像



10% SDS-PAGE staining 2 ug Liver TRAP1.

SDS-PAGE - TRAP1 protein (Active) (ab123775)

**Please note:** All products are "FOR RESEARCH USE ONLY AND ARE NOT INTENDED FOR DIAGNOSTIC OR THERAPEUTIC USE"

## Our Abpromise to you: Quality guaranteed and expert technical support

- Replacement or refund for products not performing as stated on the datasheet
- Valid for 12 months from date of delivery
- Response to your inquiry within 24 hours
- We provide support in Chinese, English, French, German, Japanese and Spanish
- Extensive multi-media technical resources to help you
- We investigate all quality concerns to ensure our products perform to the highest standards

If the product does not perform as described on this datasheet, we will offer a refund or replacement. For full details of the Abpromise, please visit <http://www.abcam.co.jp/abpromise> or contact our technical team.

## Terms and conditions

---

- Guarantee only valid for products bought direct from Abcam or one of our authorized distributors