

## Product datasheet

# Recombinant human Rsk 2 / MAPKAP Kinase 1b protein ab60881

1 References 画像数 2

### 製品の概要

製品名	Recombinant human Rsk 2 / MAPKAP Kinase 1b protein
タンパク質長	Full length protein

### 法規制情報

### カルタヘナ法

### 製品の詳細

由来	Recombinant
由来	Baculovirus infected Sf9 cells
アミノ酸配列	
生物種	Human

### 特性

Our [Abpromise guarantee](#) covers the use of **ab60881** in the following tested applications.

The application notes include recommended starting dilutions; optimal dilutions/concentrations should be determined by the end user.

アプリケーション	SDS-PAGE Functional Studies
精製度	> 90 % SDS-PAGE. Purity: >90% as determined by densitometry.
製品の状態	Liquid
備考	<a href="#">ab204879</a> (RPS6 peptide) can be utilized as a substrate for assessing kinase activity

### 前処理および保存

保存方法および安定性	Shipped on dry ice. Upon delivery aliquot and store at -80°C. Avoid freeze / thaw cycles.
------------	---

Preservative: None

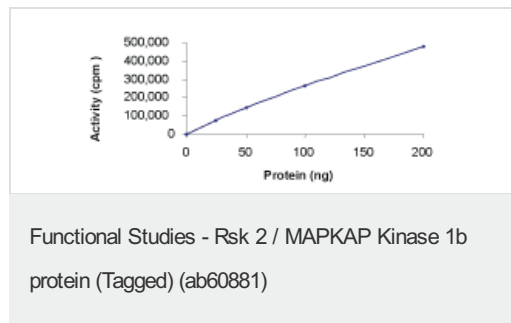
Constituents: 25% Glycerol, 50mM Tris HCl, 150mM Sodium chloride, 0.25mM DTT, 0.1mM EGTA, 0.1mM EDTA, 0.1mM PMSF, pH 7.5

This product is an active protein and may elicit a biological response in vivo, handle with caution.

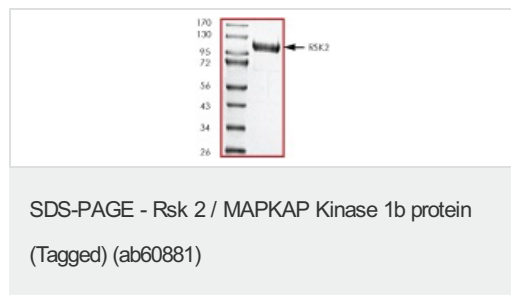
## 関連情報

機能	Serine/threonine kinase that may play a role in mediating the growth-factor and stress induced activation of the transcription factor CREB.
組織特異性	Expressed in many tissues, highest levels in skeletal muscle.
関連疾患	Defects in RPS6KA3 are the cause of Coffin-Lowry syndrome (CLS) [MIM:303600]; an X-linked dominant disorder characterized by severe mental retardation with facial and digital dysmorphisms, and progressive skeletal deformations.
配列類似性	Belongs to the protein kinase superfamily. AGC Ser/Thr protein kinase family. S6 kinase subfamily. Contains 1 AGC-kinase C-terminal domain. Contains 2 protein kinase domains.
翻訳後修飾	Autophosphorylated on Ser-386, as part of the activation process. Ser-227 phosphorylation promotes Ser-386 phosphorylation and leads to basal activation. Full activation by growth factors requires additional phosphorylation on Ser-369.

## 画像



Sample Kinase Activity Plot.



ab60881 on SDS-PAGE, MW ~112 kDa.

**Please note:** All products are "FOR RESEARCH USE ONLY AND ARE NOT INTENDED FOR DIAGNOSTIC OR THERAPEUTIC USE"

**Our Abpromise to you: Quality guaranteed and expert technical support**

- Replacement or refund for products not performing as stated on the datasheet
- Valid for 12 months from date of delivery
- Response to your inquiry within 24 hours
  
- We provide support in Chinese, English, French, German, Japanese and Spanish
- Extensive multi-media technical resources to help you
- We investigate all quality concerns to ensure our products perform to the highest standards

If the product does not perform as described on this datasheet, we will offer a refund or replacement. For full details of the Abpromise, please visit <http://www.abcam.co.jp/abpromise> or contact our technical team.

### **Terms and conditions**

---

- Guarantee only valid for products bought direct from Abcam or one of our authorized distributors