

Product datasheet

Recombinant human PKC delta protein ab60844

画像数 2

製品の概要

製品名	Recombinant human PKC delta protein
タンパク質長	Full length protein

法規制情報

カルタヘナ法

製品の詳細

由来	Recombinant
由来	Baculovirus infected Sf9 cells
アミノ酸配列	
生物種	Human

特性

Our [Abpromise guarantee](#) covers the use of **ab60844** in the following tested applications.

The application notes include recommended starting dilutions; optimal dilutions/concentrations should be determined by the end user.

生理活性 Specific Activity: 302 nmol/min/mg.

アプリケーション
Functional Studies
SDS-PAGE
Western blot

製品の状態 Liquid

備考
Phosphatidylinositol is the most potent activator of PKC delta.
[ab204856](#) (CREB peptide) can be utilized as a substrate for assessing kinase activity

前処理および保存

保存方法および安定性

Shipped on dry ice. Upon delivery aliquot and store at -80°C. Avoid freeze / thaw cycles.

Preservative: None

Constituents: 25% Glycerol, 50mM Tris HCl, 150mM Sodium chloride, 0.25mM DTT, 0.1mM EGTA, 0.1mM EDTA, 0.1mM PMSF, pH 7.5

This product is an active protein and may elicit a biological response in vivo, handle with caution.

関連情報

機能

This is calcium-independent, phospholipid-dependent, serine- and threonine-specific enzyme. PKC is activated by diacylglycerol which in turn phosphorylates a range of cellular proteins. PKC also serves as the receptor for phorbol esters, a class of tumor promoters. May play a role in antigen-dependent control of B-cell function. Phosphorylates MUC1 in the C-terminal and regulates the interaction between MUC1 and beta-catenin.

配列類似性

Belongs to the protein kinase superfamily. AGC Ser/Thr protein kinase family. PKC subfamily. Contains 1 AGC-kinase C-terminal domain. Contains 1 C2 domain. Contains 2 phorbol-ester/DAG-type zinc fingers. Contains 1 protein kinase domain.

ドメイン

The C1 domain, containing the phorbol ester/DAG-type region 1 (C1A) and 2 (C1B), is the diacylglycerol sensor. The C2 domain is a non-calcium binding domain. It binds proteins containing phosphotyrosine in a sequence-specific manner.

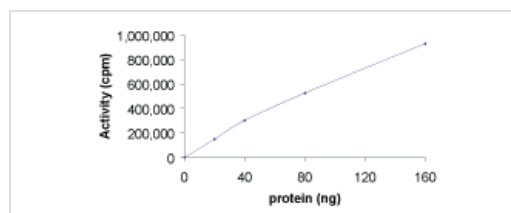
翻訳後修飾

Phosphorylated on Thr-507, within the activation loop. Autophosphorylated and/or phosphorylated. Although the Thr-507 phosphorylation occurs it is not a prerequisite for enzymatic activity.

細胞内局在

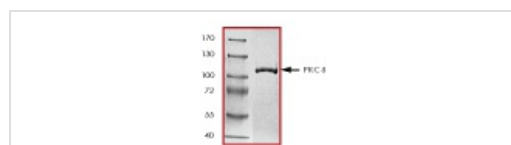
Cytoplasm. Membrane.

画像



Sample Kinase Activity Plot.

Functional Studies - PKC delta protein (Tagged)
(ab60844)



ab60844 on SDS-PAGE, MW ~104 kDa.

SDS-PAGE - PKC delta protein (Tagged) (ab60844)

Our Abpromise to you: Quality guaranteed and expert technical support

- Replacement or refund for products not performing as stated on the datasheet
- Valid for 12 months from date of delivery
- Response to your inquiry within 24 hours

- We provide support in Chinese, English, French, German, Japanese and Spanish
- Extensive multi-media technical resources to help you
- We investigate all quality concerns to ensure our products perform to the highest standards

If the product does not perform as described on this datasheet, we will offer a refund or replacement. For full details of the Abpromise, please visit <http://www.abcam.co.jp/abpromise> or contact our technical team.

Terms and conditions

- Guarantee only valid for products bought direct from Abcam or one of our authorized distributors